

SHROPSHIRE & BORDERS

TEXEL CLUB IN LAMB SALE

THURSDAY 14TH DECEMBER 2023

FINAL DISPERSAL OF TREFONNEN FLOCK
PRODUCTION SALE OF CLAYBURY FLOCK
DISPERSAL SALE OF ALDAN FLOCK



SALE AT 6PM

WELSHPOOL LIVESTOCK
SALES

BUTTINGTON CROSS,
WELSHPOOL,
POWYS, SY21 8SR





THE BRAND OF QUALITY



ActiSaf^{Sc 47}
SafMannan

GIVE THEM THE BEST START

Bibby's ewe feed ranges contain only the highest quality ingredients to maximise ewe performance and give lambs the best start in life.

Actisaf® live yeast supports rumen function, drives feed intakes and improves energy supply to the ewe. This results in up to 20% higher milk yield, reduced risk of acidosis/digestive upset, smoother diet transitions and lower levels of circulating ketones - a key indicator of negative energy balance or twin lamb disease.

Safmannan® is rich in specific beta glucans and mannans which support the immune system and bind to certain pathogens, resulting in:

- Up to 25% higher IgG levels in colostrum
- Immunity support for the ewe
- Improved lamb performance later in life

For further details contact your Bibby sales specialist or our Carmarthen office on 01267 232041.

FOREWORD

This is the 23rd Annual Sale of Pedigree Texel In-Lamb females being held on the instruction of the Shropshire and Borders Texel Club.

The Sale will be preceded by the Show which is to be judged by

Mr J Hartwright – Hartwright Texels

Show to commence at 5pm prompt.

CLASS 1 SENIOR EWE

Kindly sponsored by AGRIL

1ST £25 2nd £15 3rd £10

CLASS 2 SHEARLING EWE

Kindly sponsored by Bibby Agri Ltd

1ST £25 2nd £15 3rd £10

CLASS 3 EWE LAMB

Kindly sponsored by Nigel Farr Farm Services, Westbury

1ST £25 2nd £15 3rd £10

Rosettes will be awarded 1st – 6th in all classes

CHAMPION

Kindly sponsored by Farmgene Artificial Breeding Services

£100

NOTES TO VENDORS

1. ARRIVAL TIMES

All sheep must be penned by 3pm on the afternoon of the Sale.

Show commences at 5pm & Sale at 6pm.

2. UPSET PRICE

An upset price of 300gns for In-Lamb ewes/shearlings & 200gns for empty ewe lambs will operate.

3. SUBSTITUTE

4. One substitute per 10 per section will be allowed & will be marked with a red dot.

5. SCANNING

All senior ewes & shearling ewes will be **SCANNED ON THE AFTERNOON OF THE SALE.**

Results of scanning will be announced at the time of Sale. 'Running with the tup' will not suffice.

Barren ewes will not be offered for sale.

CONDITIONS OF SALE

All sheep will be sold under the Auspices of the Texel Sheep Society and the Conditions of sale relevant to individual sales. These can be viewed at texel.uk/societyrules

Auctioneers also display copies of the Conditions of sale within the auction house.

DISCLAIMER

The pedigree, performance, genomic information stored by the Society in the iTexel database and published on society pedigree certificates, reports and general publications is as supplied by, or on behalf of the breeder. The responsibility for the accuracy of the information therefore rests solely with the breeder and not with the British Texel Sheep Society Ltd (BTSS).

Health information and footnotes that are stored in iTexel and published in sales catalogues produced by the society, is supplied by or on behalf of the vendor. The responsibility for the accuracy of the information therefore rests solely with the vendor and not with the British Texel Sheep Society Ltd (BTSS).

Performance data and breeding values change over time as new data becomes available.

Whilst every effort is made to ensure accuracy of the information contained in society reports and publications, no responsibility can be accepted by the Society for any errors or any reliance on the use of information. No warranty is given in respect thereof by the BTSS and, to the maximum extent permitted by law, the BTSS have no liability for any loss, damage or injury howsoever caused (including that caused by negligence) or suffered directly or indirectly in relation to information and opinions contained or omitted from BTSS publications.

The Texel Sheep Society provides enhanced data collection and performance reporting services to its membership and supports the National Terminal Sire Evaluation.

texelplus indexes have been updated, making them simpler to use and understand.

In simple terms: higher value = higher profit per lamb

The texelplus economic indexes support the breed's development with an increased focus on commercial traits and profitability. The **TERMINAL** and **REPLACEMENT INDEXES** reflect the breed's influence on industry. Both are presented as the potential extra profit per lamb born in a commercial setting, compared to the population average.

Index	Average	Top 25%	Top 10%	Top 5%	Top 1%
Terminal Expected change in profit per terminal lamb born	£4.03	£5.13	£6.12	£6.71	£7.81
Replacement Expected change in profit per replacement lamb born	£4.23	£5.37	£6.40	£7.01	£8.17

The **TERMINAL INDEX** supports increased profitability through improving prime lambs and is weighted strongly for meat production. The **REPLACEMENT INDEX** includes additional maternal traits to optimise production of female replacements.

Commercial producers solely producing prime lambs should use the **TERMINAL INDEX** to inform their selection; however, those retaining female replacements should use the **REPLACEMENT INDEX**.

Sub-indexes underpin the indexes to provide more information on the relative values of growth, carcass quality, reproduction, and adult size.

An example

High ranking rams deliver over £6.00 per lamb more than lower-ranking rams. Over a ram's working lifetime, this is easily worth an extra £1,500 per ram; generated through shorter finish times and improved carcass quality.



Understanding **texelplus** indexes in catalogues

Ram Lambs

Messrs A, B & C FARMER

TFXELS

TXX

2 TEXEL CAT IN THE HAT

Sire: BLOSSOM TREE SUPERSTAR ABC1101111(1) by DAYDREAM PICASSO
Dam: TXL1500300(2) by PARKLANDS YOGIBEAR ZZZ1600365(2)

	Growth	Adult Size	Repro.	Carcass	Index	Index Acc.	Ranking
Terminal	£9.14	N/A	£0.05	£-0.38	£8.82	68%	TOP 1%
Replacement	£12.13	£-3.26	£1.25	£-0.50	£9.61	67%	TOP 1%

TXX1900124(2)

Born: 25/02/2019
Inbreeding coefficient: 3.9

1 TEXEL CAPTAIN AMERICA

Sire: BLOSSOM TREE SUPERSTAR ABC1101111(1) by DAYDREAM PICASSO
Dam: TXL1500289(2) by PLUMDALE VICTORY XYZ1400893(2)

	Growth	Adult Size	Repro.	Carcass	Index	Index Acc.	Ranking
Terminal	£5.44	N/A	£-0.01	£0.88	£6.31	86%	TOP 5%
Replacement	£7.21	£-1.22	£0.84	£1.16	£8.00	85%	TCP 1%

TXX1900123(2)

Born: 09/02/2019
Inbreeding coefficient: 6.5

Trait weighting

Different emphases are given to individual traits between the terminal and replacement indexes. This results in different sub-index values.

Reproduction sub-index

The commercial benefit of lambing ease, litter size and maternal ability. Promotes optimum litter sizes and better mothers.

Adult size sub-index

The benefit of mature size as a replacement ewe. Promotes smaller animals as they require less maintenance.

Growth sub-index

Captures the benefit from growth using eight-week weight and scan weight information. Faster growth is more advantageous.

Carcass sub-index

The value of muscle and fat weight in the carcass. Encourages muscle growth with fat cover.

Accuracy

A measure of accuracy of the index. The higher the number the better.

Index values

The sum of the sub-index values and potential profit per lamb born for terminal and replacement production.

Ranking

Where the animal ranks compared to the current average animal.

Further information on texelplus services and help on understanding breeding values and indexes is available at <https://texel.uk/txelplus/>

Index		
Name and Address	Flock Prefix	Lot Number
ANDREW , IFAN DAFYDD, LOWER BRYNYGROES, MEIFOD, POWYS, SY22 6YG. 07870 389 752. UK0712714	BRYNYGROES	32-33F
CLAYBURY TEXELS , ENSDON HOUSE, MONTFORD BRIDGE, SHREWSBURY, SHROPSHIRE, SY4 1EJ. 07968 791 023. UK0304815	CLAYBURY	87-128F
EVANS , D ESMOR, MONFA, GWERNAFFIELD ROAD, MOLD, FLINTSHIRE, CH7 1RE. 07889 137 367. UK0706352	MAERDY	24-31F
FOSTER , MARIA, THE GROVE, FORDEN, WELSHPOOL, POWYS, SY21 8NH. 07856 387 793. UK0712022	GROVE FARM	1F
GIBBS , N E & J A, BETTONFIELD FARM, BETTON STRANGE, SHREWSBURY, SHROPSHIRE, SY5 6HZ. 07811 075 931. UK0303667	BETTONFIELD	14-23F
HARDING , M P, LOWER CEFNYPWLL, ABERMULE, MONTGOMERY, POWYS, SY15 6JL. 07840 274 704. UK0701365	HARDY	61-62F
HUGHES , ROY, TY CANOL, TREFONEN, OSWESTRY, SHROPSHIRE, SY10 9EB. 07581 420 128. UK0304390	TREFONNEN	75-86F
JONES , DANIEL, GRAIG FACH, LLANFAIR CAEREINNION, WELSHPOOL, POWYS, SY21 0DW. 07836 255 289. UK0701079	ALDAN	129-160F
LOWE , B, R & D, RUE WOOD FARM, RUE WOOD, WEM, SHREWSBURY, SHROPSHIRE, SY4 5SH. 07966 582 921. UK0319813	TIKI	57-58F
LOWE , BEN, RUE WOOD FARM, RUE WOOD, SHREWSBURY, SHROPSHIRE, SY4 5SH. 07946 438 484. UK0316958	RUE WOOD	59-60F
MORGAN , TOM, WOODEND HALL FARM, COTON, WHITCHURCH, SHROPSHIRE, SY13 3LJ. 07870 139 901. UK0310589	MORWOOD	46-56F
PIERCE , R E J, OLDFIELDS FARM, PULFORD, CHESTER, CHESHIRE, CH4 9EJ. 07732 340 243. UK0173290	OLDFORD	34-45F
RIDGE , WILLIAM, BROOK FARM, LITTLE STRETTON, CHURCH STRETTON, SHROPSHIRE, SY6 6PP. 07949 357398. UK0305349	RIDGEWAY	70-74F
WILLIAMS , JOSEPH, CWMDYLLUAN, VAN, LLANIDLOES, POWYS, SY18 6NR. 07976 781 527. UK0701231	OWL VALLEY	63-69F
WILLIAMS , S P & C P, GREAT WOLLASCOTT FARM, BOMERE HEATH, SHREWSBURY, SHROPSHIRE, SY4 3AW. 07771 734 806. UK0305953	WOLLASCOTT	2-13F

Aged Ewes

MARIA FOSTER

GROVE FARM

FMT

1 GROVE FARM

FMT2100115(2)

Born: 09/02/2021

Inbreeding coefficient: 2.6

Sire: PLASUCHA CRUSADER BFE1909240(E1) by PLASUCHA ALL STAR

Dam: FMT1800086(1) by SCHOLARS WONDER WALL YWM1500352(E)

	Growth	Adult Size	Repro.	Carcass	Index	Index Acc.
Terminal	£3.95	N/A	£0.01	£-0.28	£3.67	58%
Replacement	£5.24	£-1.18	£0.11	£-0.38	£3.80	61%

Service Sire:KNAP FREEDOM FIGHTER by NEW VIEW ELECTRIFYING TWF2101086(E1)

Service Details:05/09/2023

Service Sires

KNAP FREEDOM FIGHTER

CKP2206550(E1)

Born: 15/02/2022

Scrapie genotype: ARR/ARRH

Inbreeding coefficient: 0.0

Sire: NEW VIEW ELECTRIFYING TWF2101086(E1) by SPORTSMANS DOUBLE DIAMOND

Dam: CKP1802749(E2) by MULLAN AMIGO HBN1701499(E)

	Growth	Adult Size	Repro.	Carcass	Index	Index Acc.
Terminal	£2.21	N/A	£-0.06	£-0.87	£1.28	60%
Replacement	£2.94	£-0.81	£0.68	£-1.16	£1.65	57%

Shearling Ewes

MESSRS S P & C P WILLIAMS		WOLLASCOTT	WSW	
2	WOLLASCOTT	WSW2205155(1)		Born: 18/03/2022
		Inbreeding coefficient: 6.0		
	Sire: WOLLASCOTT DAN WSW2004245(2) by SCOLTON YOUNIQUE			
	Dam: WSW2004330(3) by SCOLTON BOWLER RWS1801037(2)			
	Service Sire: SCOLTON FULL BACK by SCOLTON DYNAMO RWS2001228(3)			
	Service Details: NS 23/09/23			
3	WOLLASCOTT	WSW2205245(2)		Born: 04/04/2022
		Inbreeding coefficient: 0.0		
	Sire: SPORTSMANS DEISEL BGS2004379(E1) by GARNGOUR CRAFTSMAN			
	Dam: WSW2004157(1) by COOILINGEL THOR CCD1200126(1)			
	Service Sire: SCOLTON FULL BACK by SCOLTON DYNAMO RWS2001228(3)			
	Service Details: NS 23/09/23			
4	WOLLASCOTT	WSW2205047(2)		Born: 06/03/2022
		Inbreeding coefficient: 0.0		
	Sire: SPORTSMANS DEISEL BGS2004379(E1) by GARNGOUR CRAFTSMAN			
	Dam: WSW2004385(2) by WOLLASCOTT BOYCIE WSW1803428(1)			
	Service Sire: SCOLTON FULL BACK by SCOLTON DYNAMO RWS2001228(3)			
	Service Details: NS 23/09/23			
5	WOLLASCOTT	WSW2205220(2)		Born: 20/03/2022
		Inbreeding coefficient: 4.4		
	Sire: WOLLASCOTT DAN WSW2004245(2) by SCOLTON YOUNIQUE			
	Dam: WSW2004187(2) by WOLLASCOTT RED STAR WSW87545(2)			
	Service Sire: SCOLTON FULL BACK by SCOLTON DYNAMO RWS2001228(3)			
	Service Details: NS 23/09/23			
6	WOLLASCOTT	WSW2204981(2)		Born: 28/02/2022
		Inbreeding coefficient: 5.1		
	Sire: WOLLASCOTT DESERT STAR WSW2004249(2) by WOLLASCOTT RED STAR			
	Dam: WSW1703071(1) by WOLLASCOTT V.I.P. WSW1401970(1)			
	Service Sire: WOLLASCOTT CAPTAIN II by WOLLASCOTT APPOLLO WSW1703259(1)			
	Service Details: NS 23/09/23			
7	WOLLASCOTT	WSW2205018(1)		Born: 04/03/2022
		Inbreeding coefficient: 1.3		
	Sire: WOLLASCOTT DOUGLAS WSW2004231(2) by COOILINGEL THOR			
	Dam: WSW1301603(2) by SCOLTON SHOGUN RWS1100110(3)			
	Service Sire: WOLLASCOTT CAPTAIN II by WOLLASCOTT APPOLLO WSW1703259(1)			
	Service Details: NS 23/09/23			
8	WOLLASCOTT	WSW2205031(1)		Born: 06/03/2022
		Inbreeding coefficient: 7.0		
	Sire: WOLLASCOTT DAN WSW2004245(2) by SCOLTON YOUNIQUE			
	Dam: WSW1703265(2) by COOILINGEL THOR CCD1200126(1)			
	Service Sire: SPORTSMANS GALAXY by RHAEDR FIRST CHOICE ENM2202599(E1)			
	Service Details: NS 23/09/23			
9	WOLLASCOTT	WSW2204902(2)		Born: 22/02/2022
		Inbreeding coefficient: 5.3		
	Sire: WOLLASCOTT D.N.A. WSW2004338(3) by SCOLTON YOUNG PRETENDER			
	Dam: WSW1903757(1) by WOLLASCOTT YMCA WSW1602929(2)			
	Service Sire: WOLLASCOTT CAPTAIN II by WOLLASCOTT APPOLLO WSW1703259(1)			
	Service Details: NS 23/09/23			
10	WOLLASCOTT	WSW2204941(2)		Born: 27/02/2022
		Inbreeding coefficient: 3.1		
	Sire: WOLLASCOTT WINNING SHOT WSW92059(2) by WOLLASCOTT RED STAR			
	Dam: WSW2004352(3) by WOLLASCOTT CASPER WSW1903948(1)			
	Service Sire: SCOLTON FULL BACK by SCOLTON DYNAMO RWS2001228(3)			
	Service Details: NS 23/09/23			

11 WOLLASCOTT WSW2205017(1) Born: 03/03/2022

Inbreeding coefficient: 0.0

Sire: WOLLASCOTT RED STAR WSW87545(2) by

Dam: WSW1602681(2) by WOLLASCOTT V.Q. WSW1401886(2)

Service Sire: WOLLASCOTT CAPTAIN II by WOLLASCOTT APPOLLO WSW1703259(1)

Service Details: NS 23/09/23

12 WOLLASCOTT WSW2205030(1) Born: 06/03/2022

Inbreeding coefficient: 4.5

Sire: WOLLASCOTT DESERT STAR WSW2004249(2) by WOLLASCOTT RED STAR

Dam: WSW1803558(1) by SCOLTON YOUNIQUE RWS1600788(1)

Service Sire: SPORTSMANS GALAXY by RHAEDR FIRST CHOICE ENM2202599(E1)

Service Details: NS 23/09/23

13 WOLLASCOTT WSW2205165(2) Born: 18/03/2022

Inbreeding coefficient: 0.0

Sire: SPORTSMANS DEISEL BGS2004379(E1) by GARNGOUR CRAFTSMAN

Dam: WSW1803594(2) by SCOLTON YOUNIQUE RWS1600788(1)

Service Sire: WOLLASCOTT CAPTAIN II by WOLLASCOTT APPOLLO WSW1703259(1)

Service Details: NS 23/09/23

Service Sires

SCOLTON FULL BACK RWS2201445(1) Born: 08/02/2022

Inbreeding coefficient: 3.0

Sire: SCOLTON DYNAMO RWS2001228(3) by CANLLEFAES BIG BOY

Dam: RWS1901198(1) by WILODGE BRAVO TIP1801861(E1)

Purchased for 3000gns Builth NSA 2023 same bloodlines as 24K Scolton Field Marshall

SPORTSMANS GALAXY BGS2306373(E1) Born: 17/02/2023

Inbreeding coefficient: 5.4

Sire: RHAEDR FIRST CHOICE ENM2202599(E1) by SPORTSMANS DARE DEVIL

Dam: PFD1903130(2) by SPORTSMANS BATMAN BGS1803201(E1)

Purchased Worcester 2023 dam Procters ewe sold for 46k sire 160k Rhaeadr First Choice

WOLLASCOTT CAPTAIN II WSW1903920(2) Born: 28/02/2019

Inbreeding coefficient: 0.1

Sire: WOLLASCOTT APPOLLO WSW1703259(1) by COOLINGEL THOR

Dam: PFD1701771(E) by STRATHBOGIE YA BELTER IJS1600653(E)

Same female family as Sportsmans Galaxy see notes

N E & J A GIBBS BETTONFIELD GEB

14 BETTONFIELD GEB2201634(2) Born: 23/02/2022

Inbreeding coefficient: 0.5

Sire: CAMBWELL EDDISON LTC2106048(3) by CAMBWELL DYNAMITE I

Dam: GEB1901263(1) by CAEREINION ACTIVE PEC1700538(2)

	Growth	Adult Size	Repro.	Carcass	Index	Index Acc.	Ranking
Terminal	£4.43	N/A	£0.02	£-0.03	£4.42	69%	
Replacement	£5.88	£-1.47	£1.06	£-0.04	£5.43	64%	TOP 25%

Service Sire: CAMBWELL GOLIATH by COWAL ESCOBAR CKC2113552(E2)

Service Details: With ram from 05/10/23

15 BETTONFIELD GEB2201707(2) Born: 15/03/2022

Inbreeding coefficient: 0.4

Sire: CAMBWELL EDDISON LTC2106048(3) by CAMBWELL DYNAMITE I

Dam: GEB2001414(2) by OLDFORD CAYLE PRE1901210(E1)

	Growth	Adult Size	Repro.	Carcass	Index	Index Acc.
Terminal	£3.29	N/A	£-0.01	£-0.13	£3.15	69%
Replacement	£4.37	£-0.99	£0.95	£-0.17	£4.15	65%

Service Sire: CAMBWELL GOLIATH by COWAL ESCOBAR CKC2113552(E2)

Service Details: With ram from 05/10/23

16 BETTONFIELD**GEB2201695(2)****Born: 11/03/2022****Inbreeding coefficient: 0.1**

Sire: CAMBWELL EDDISON LTC2106048(3) by CAMBWELL DYNAMITE I

Dam: GEB2001353(1) by MAERDY ABERGAVENNY EDO1701597(2)

	Growth	Adult Size	Repro.	Carcass	Index	Index Acc.	Ranking
Terminal	£4.63	N/A	£-0.03	£0.32	£4.92	69%	
Replacement	£6.14	£-1.60	£0.58	£0.42	£5.55	64%	TOP 25%

Service Sire: CAMBWELL GOLIATH by COWAL ESCOBAR CKC2113552(E2)

Service Details: With ram from 05/10/23

17 BETTONFIELD**GEB2201619(2)****Born: 22/02/2022****Inbreeding coefficient: 0.3**

Sire: CAMBWELL EDDISON LTC2106048(3) by CAMBWELL DYNAMITE I

Dam: GEB1801194(3) by STANTON YIN SIN WPS1600882(E)

	Growth	Adult Size	Repro.	Carcass	Index	Index Acc.	Ranking
Terminal	£3.43	N/A	£-0.01	£0.72	£4.14	69%	
Replacement	£4.55	£-0.95	£0.89	£0.95	£5.43	65%	TOP 25%

Service Sire: CAMBWELL GOLIATH by COWAL ESCOBAR CKC2113552(E2)

Service Details: With ram from 05/10/23

18 BETTONFIELD**GEB2201656(2)****Born: 02/03/2022****Inbreeding coefficient: 0.5**

Sire: CAMBWELL EDDISON LTC2106048(3) by CAMBWELL DYNAMITE I

Dam: GEB1901222(2) by MAERDY ABERGAVENNY EDO1701597(2)

	Growth	Adult Size	Repro.	Carcass	Index	Index Acc.	
Terminal	£3.31	N/A	£-0.08	£-0.70	£2.53	69%	
Replacement	£4.39	£-0.93	£0.64	£-0.93	£3.18	65%	

Service Sire: CAMBWELL GOLIATH by COWAL ESCOBAR CKC2113552(E2)

Service Details: With ram from 05/10/23

19 BETTONFIELD**GEB2201670(2)****Born: 04/03/2022****Inbreeding coefficient: 0.1**

Sire: CAMBWELL EDDISON LTC2106048(3) by CAMBWELL DYNAMITE I

Dam: GEB2001416(2) by MAERDY ABERGAVENNY EDO1701597(2)

	Growth	Adult Size	Repro.	Carcass	Index	Index Acc.	Ranking
Terminal	£4.40	N/A	£-0.05	£0.14	£4.49	69%	
Replacement	£5.83	£-1.03	£0.75	£0.19	£5.74	65%	TOP 25%

Service Sire: CAMBWELL GOLIATH by COWAL ESCOBAR CKC2113552(E2)

Service Details: With ram from 05/10/23

20 BETTONFIELD**GEB2201689(2)****Born: 09/03/2022****Inbreeding coefficient: 0.1**

Sire: CAMBWELL EDDISON LTC2106048(3) by CAMBWELL DYNAMITE I

Dam: GEB2001452(1) by PEACEHAY BODY BUILDER CFP1801940(1)

	Growth	Adult Size	Repro.	Carcass	Index	Index Acc.	Ranking
Terminal	£5.48	N/A	£-0.04	£0.39	£5.83	69%	TOP 25%
Replacement	£7.27	£-1.95	£0.50	£0.52	£6.34	64%	TOP 25%

Service Sire: CAMBWELL GOLIATH by COWAL ESCOBAR CKC2113552(E2)

Service Details: With ram from 05/10/23

21 BETTONFIELD**GEB2201686(2)****Born: 09/03/2022****Inbreeding coefficient: 0.0**

Sire: CAMBWELL EDDISON LTC2106048(3) by CAMBWELL DYNAMITE I

Dam: GEB2001385(1) by MAERDY ABERGAVENNY EDO1701597(2)

	Growth	Adult Size	Repro.	Carcass	Index	Index Acc.	
Terminal	£4.84	N/A	£-0.04	£-0.22	£4.59	69%	
Replacement	£6.43	£-1.40	£0.46	£-0.29	£5.20	64%	

Service Sire: CAMBWELL GOLIATH by COWAL ESCOBAR CKC2113552(E2)

Service Details: With ram from 05/10/23

22 BETTONFIELD**GEB2201669(2)****Born: 04/03/2022****Inbreeding coefficient: 0.1**

Sire: CAMBWELL EDDISON LTC2106048(3) by CAMBWELL DYNAMITE I

Dam: GEB2001416(2) by MAERDY ABERGAVENNY EDO1701597(2)

	Growth	Adult Size	Repro.	Carcass	Index	Index Acc.
Terminal	£3.77	N/A	£-0.05	£-0.28	£3.44	69%
Replacement	£5.00	£-0.86	£0.75	£-0.37	£4.52	65%

Service Sire: CAMBWELL GOLIATH by COWAL ESCOBAR CKC2113552(E2)

Service Details: With ram from 05/10/23

23 BETTONFIELD**GEB2201677(2)****Born: 07/03/2022****Inbreeding coefficient: 0.4**

Sire: CAMBWELL EDDISON LTC2106048(3) by CAMBWELL DYNAMITE I

Dam: GEB2001444(2) by CAEREINION ACTIVE PEC1700538(2)

	Growth	Adult Size	Repro.	Carcass	Index	Index Acc.
Terminal	£4.48	N/A	£-0.01	£-0.17	£4.29	68%
Replacement	£5.94	£-1.50	£1.11	£-0.23	£5.32	64%

Service Sire: CAMBWELL GOLIATH by COWAL ESCOBAR CKC2113552(E2)

Service Details: With ram from 05/10/23

Service Sires**CAMBWELL GOLIATH****LTC2307562(1)****Born: 19/02/2023****Inbreeding coefficient: 0.0**

Sire: COWAL ESCOBAR CKC2113552(E2) by HEXEL DJANGO

Dam: LTC1904439(E1) by LANGFORD ADDER AGAIN HML1700521(2)

	Growth	Adult Size	Repro.	Carcass	Index	Index Acc.	Ranking
Terminal	£8.51	N/A	£0.02	£0.14	£8.68	77%	TOP 1%
Replacement	£11.30	£-4.07	£0.70	£0.19	£8.12	71%	TOP 5%

Purchased English Premier Sale 23, 2000gns

D ESMOR EVANS**MAERDY****EDO****24 MAERDY****EDO2203514(2)****Born: 19/03/2022****Inbreeding coefficient: 0.0**

Sire: STRATHBOGIE EROTIC IJS2105917(E2) by MILNBANK DANCE MONKEY

Dam: EDO2002675(2) by AUCHRY BORIS SED1801207(2)

Service Sire: CRESSAGE EVEREST by WALSTON CARLOS OJT1914122(2)

Service Details: Running with Ram from 20.10.2023

25 MAERDY**EDO2203521(1)****Born: 17/03/2022****Inbreeding coefficient: 0.5**

Sire: FEDDAL ROAD EASYPEASY SFM2101021(E1) by ELLEN VALLEY DAZZLER

Dam: EDO2002630(2) by PLASUCHA BOSS MAN BFE1808061(E1)

Service Sire: CRESSAGE EVEREST by WALSTON CARLOS OJT1914122(2)

Service Details: Running with Ram from 20.10.2023

26 MAERDY**EDO2203550(1)****Born: 01/04/2022****Inbreeding coefficient: 1.0**

Sire: BETTONFIELD COLUMBO GEB1901245(2) by MAERDY ABERGAVENNY

Dam: EDO1902462(2) by GARNGOUR AMBASSADOR CJN1704914(E)

Service Sire: CRESSAGE EVEREST by WALSTON CARLOS OJT1914122(2)

Service Details: Running with Ram from 20.10.2023

27 MAERDY**EDO2203597(3)****Born: 20/03/2022****Inbreeding coefficient: 0.9**

Sire: BETTONFIELD COLUMBO GEB1901245(2) by MAERDY ABERGAVENNY

Dam: EDO1801996(2) by LOOSEBEARE WARLORD I QEL1505559(1)

Service Sire: CRESSAGE EVEREST by WALSTON CARLOS OJT1914122(2)

Service Details: Running with Ram from 20.10.2023

28 MAERDY**EDO2203601(3)****Born: 16/04/2022****Inbreeding coefficient: 0.2**

Sire: CARON DYNAMITE WLT2001078(1) by TULLYLAGAN COMMANDER

Dam: EDO1902226(2) by GARNGOUR AMBASSADOR CJN1704914(E)

Service Sire: CRESSAGE EVEREST by WALSTON CARLOS OJT1914122(2)

Service Details: Running with Ram from 20.10.2023

29 MAERDY EDO2203631(2) Born: 26/03/2022

Inbreeding coefficient: 6.4

Sire: BETTONFIELD COLUMBO GEB1901245(2) by MAERDY ABERGAVENNY
 Dam: EDO1701637(2) by SEIONT UNIGOLYN ROS1300246(1)
 Service Sire: CRESSAGE EVEREST by WALSTON CARLOS OJT1914122(2)
 Service Details: Running with Ram from 20.10.2023

30 MAERDY EDO2203639(2) Born: 01/04/2022

Inbreeding coefficient: 0.0

Sire: BETTONFIELD COLUMBO GEB1901245(2) by MAERDY ABERGAVENNY
 Dam: EDO1802012(2) by GREENALL YAYA TOURE GXF1600253(1)
 Service Sire: CRESSAGE EVEREST by WALSTON CARLOS OJT1914122(2)
 Service Details: Running with Ram from 20.10.2023

31 MAERDY EDO2203672(2) Born: 14/04/2022

Inbreeding coefficient: 1.8

Sire: ROXBURGH CHEEKY CHAP EJ1904361(2) by HAYMOUNT ARNOTT
 Dam: EDO1902312(2) by GARNGOUR AMBASSADOR CJN1704914(E)
 Service Sire: CRESSAGE EVEREST by WALSTON CARLOS OJT1914122(2)
 Service Details: Running with Ram from 20.10.2023

Service Sires

CRESSAGE EVEREST EMK2104227(E1) Born: 12/02/2021

Inbreeding coefficient: 0.3

Sire: WALSTON CARLOS OJT1914122(2) by BLACKADDER ALBERTZ
 Dam: EMK1903694(E1) by FORDAFOURIE AMALERT LAF1700467(E)

	Growth	Adult Size	Repro.	Carcass	Index	Index Acc.
Terminal	£3.94	N/A	£-0.03	£-1.63	£2.28	86%
Replacement	£5.23	£-1.28	£0.24	£-2.16	£2.03	81%

IFAN DAFYDD ANDREW BRYNYGROES ANW

32 BRYNYGROES ANW2204880(1) Born: 13/03/2022

Inbreeding coefficient: 0.0

Sire: PROCTERS ECLIPSE PFD2104690(E1) by SPORTSMANS DOUBLE DIAMOND
 Dam: FDC1801733(2) by CANLLEFAES YAHOO DWC1601269(1)
 Service Sire: RHAEADR GOVERNOR by GARNGOUR ENVOY II CJN2107593(E2)
 Service Details: NS 22/09/23

33 BRYNYGROES ANW2204895(E2) Born: 15/03/2022

Inbreeding coefficient: 2.2

Sire: KNAPEASY TIGER CKP2105621(E1) by SPORTSMANS CANNON BALL
 Dam: DMN1701519(E) by KNOCK YANKEE HAK1601045(3)
 Service Sire: RHAEADR GOVERNOR by GARNGOUR ENVOY II CJN2107593(E2)
 Service Details: NS 22/09/23

Service Sires

RHAEADR GOVERNOR ENM2302747(E1) Born: 08/03/2023

Inbreeding coefficient: 3.3

Sire: GARNGOUR ENVOY II CJN2107593(E2) by PROCTERS CHUMBA WUMBA
 Dam: ENM2102492(E1) by SPORTSMANS DARE DEVIL BGS2004557(E2)

34 OLD FORD

PRE2201517(E1)

Born: 02/03/2022

Inbreeding coefficient: 3.8

Sire: MELLOR VALE DAKOTA BCM2000850(E1) by GARNGOUR CRAFTSMAN

Dam: PRE2001273(E1) by SPORTSMANS A STAR BGS1702642(E)

	Growth	Adult Size	Repro.	Carcass	Index	Index Acc.
Terminal	£5.89	N/A	£-0.05	£-1.43	£4.41	71%
Replacement	£7.82	£-1.84	£0.26	£-1.90	£4.34	66%

Service Sire:KNAP GRAND MASTER by HADDO FABIO KWIJ2202475(1)

Service Details:AI 04/10/23

Strong powerful shearling ewe originating from the famous 034 Knock ewe

35 OLD FORD

PRE2201516(E1)

Born: 27/02/2022

Inbreeding coefficient: 3.7

Sire: MELLOR VALE DAKOTA BCM2000850(E1) by GARNGOUR CRAFTSMAN

Dam: PRE2001298(1) by SPORTSMANS A STAR BGS1702642(E)

	Growth	Adult Size	Repro.	Carcass	Index	Index Acc.	Ranking
Terminal	£6.98	N/A	£-0.03	£-0.70	£6.25	58%	TOP 10%
Replacement	£9.26	£-2.16	£0.39	£-0.92	£6.57	56%	TOP 10%

Service Sire:KNAP GRAND MASTER by HADDO FABIO KWIJ2202475(1)

Service Details:AI 04/10/23

Sister to First Class - first prize performance recorded ram lamb Ruthin sale

36 OLD FORD

PRE2201487(E1)

Born: 26/02/2022

Inbreeding coefficient: 1.5

Sire: MIDLOCK ESCOBAR WKM2133488(E2) by CLAYBURY DUNKIRK

Dam: PRE2101352(E1) by MELLOR VALE DAKOTA BCM2000850(E1)

	Growth	Adult Size	Repro.	Carcass	Index	Index Acc.	Ranking
Terminal	£6.26	N/A	£-0.03	£-0.72	£5.51	58%	TOP 25%
Replacement	£8.30	£-2.00	£0.52	£-0.95	£5.87	55%	TOP 25%

Service Sire:KNAP GRAND MASTER by HADDO FABIO KWIJ2202475(1)

Service Details:AI 04/10/23

Dam full sister to 30K Envious

37 OLD FORD

PRE2201549(E2)

Born: 02/03/2022

Inbreeding coefficient: 1.6

Sire: MIDLOCK ESCOBAR WKM2133488(E2) by CLAYBURY DUNKIRK

Dam: PRE1901205(E1) by GARNGOUR ALABAMA CJN1704960(E)

	Growth	Adult Size	Repro.	Carcass	Index	Index Acc.	Ranking
Terminal	£5.90	N/A	£-0.02	£-0.40	£5.47	70%	TOP 25%
Replacement	£7.82	£-1.81	£0.58	£-0.54	£6.07	65%	TOP 25%

Service Sire:KNAP GRAND MASTER by HADDO FABIO KWIJ2202475(1)

Service Details:AI 04/10/23

Maternal sister to Gaga 3rd prize ewe lamb RWAS 23

38 OLD FORD

PRE2201498(E1)

Born: 27/02/2022

Inbreeding coefficient: 3.7

Sire: MELLOR VALE DAKOTA BCM2000850(E1) by GARNGOUR CRAFTSMAN

Dam: PRE2001298(1) by SPORTSMANS A STAR BGS1702642(E)

	Growth	Adult Size	Repro.	Carcass	Index	Index Acc.	Ranking
Terminal	£6.98	N/A	£-0.03	£-0.70	£6.25	58%	TOP 10%
Replacement	£9.26	£-2.16	£0.39	£-0.92	£6.57	56%	TOP 10%

Service Sire:MIDLOCK ESCOBAR by CLAYBURY DUNKIRK DHL2001651(E2)

Service Details:AI 04/10/23

Full sister to First Class

39 OLDFORD**PRE2201494(E2)****Born: 26/02/2022****Inbreeding coefficient: 7.3**

Sire: CRAIG DOUGLAS DANCER XSR2023203(1) by SPORTSMANS CANNON BALL

Dam: PUG1901047(E1) by GARNGOUR ALABAMA CJN1704960(E)

	Growth	Adult Size	Repro.	Carcass	Index	Index Acc.
Terminal	£4.26	N/A	£-0.05	£-0.39	£3.82	61%
Replacement	£5.65	£-1.61	£0.94	£-0.51	£4.47	59%

Service Sire: MIDLOCK ESCOBAR by CLAYBURY DUNKIRK DHL2001651(E2)

Service Details: AI 04/10/23

Full sister bred 2400gns Giovanni 4th prize ram lamb RWAS 23

40 OLDFORD**PRE2201515(2)****Born: 28/02/2022****Inbreeding coefficient: 5.1**

Sire: OLDFORD EISENHOWER PRE2101354(E1) by MELLOR VALE DAKOTA

Dam: PRE2001297(1) by KNOCK YANKEE HAK1601045(3)

	Growth	Adult Size	Repro.	Carcass	Index	Index Acc.
Terminal	£2.62	N/A	£-0.02	£-0.16	£2.44	69%
Replacement	£3.48	£-0.79	£0.37	£-0.21	£2.85	64%

Service Sire: KNAP GRAND MASTER by HADDO FABIO KWI2202475(1)

Service Details: Natural 05/10/23

One of the pen favourites

41 OLDFORD**PRE2201535(E2)****Born: 25/02/2022****Inbreeding coefficient: 1.6**

Sire: MIDLOCK ESCOBAR WKM2133488(E2) by CLAYBURY DUNKIRK

Dam: PRE1901205(E1) by GARNGOUR ALABAMA CJN1704960(E)

	Growth	Adult Size	Repro.	Carcass	Index	Index Acc.
Terminal	£4.54	N/A	£-0.02	£-0.41	£4.11	70%
Replacement	£6.02	£-1.33	£0.58	£-0.54	£4.74	65%

Service Sire: KNAP GRAND MASTER by HADDO FABIO KWI2202475(1)

Service Details: AI 04/10/23

Maternal sister to Gaga 3rd prize ewe lamb RWAS 23

42 OLDFORD**PRE2201520(E1)****Born: 27/02/2022****Inbreeding coefficient: 2.2**

Sire: MELLOR VALE DAKOTA BCM2000850(E1) by GARNGOUR CRAFTSMAN

Dam: PRE1901175(E2) by AULDHOUSEBURN BOLT BYZ1820691(E2)

	Growth	Adult Size	Repro.	Carcass	Index	Index Acc.
Terminal	£6.15	N/A	£-0.04	£-1.26	£4.85	71%
Replacement	£8.16	£-2.04	£0.16	£-1.67	£4.61	67%

Service Sire: MIDLOCK ESCOBAR by CLAYBURY DUNKIRK DHL2001651(E2)

Service Details: AI 04/10/23

Dam full sister to dam of 30K Envious

43 OLDFORD**PRE2201518(E2)****Born: 01/03/2022****Inbreeding coefficient: 3.8**

Sire: MELLOR VALE DAKOTA BCM2000850(E1) by GARNGOUR CRAFTSMAN

Dam: PRE1901240(E1) by GARNGOUR ALABAMA CJN1704960(E)

	Growth	Adult Size	Repro.	Carcass	Index	Index Acc.	Ranking
Terminal	£5.67	N/A	£-0.02	£-0.57	£5.08	72%	
Replacement	£7.52	£-1.68	£0.41	£-0.75	£5.50	67%	TOP 25%

Service Sire: MIDLOCK ESCOBAR by CLAYBURY DUNKIRK DHL2001651(E2)

Service Details: AI 04/10/23

Maternal sister to 1800gns Eco Warrior, dam top breeding Alabama daughter

44 OLDFORD**PRE2201493(2)****Born: 26/02/2022****Inbreeding coefficient: 1.0**

Sire: OLDFORD EISENHOWER PRE2101354(E1) by MELLOR VALE DAKOTA

Dam: PRE1901195(1) by AULDHOUSEBURN BOLT BYZ1820691(E2)

	Growth	Adult Size	Repro.	Carcass	Index	Index Acc.
Terminal	£1.60	N/A	£-0.01	£-0.79	£0.80	54%
Replacement	£2.12	£-0.41	£0.35	£-1.04	£1.02	52%

Service Sire: MIDLOCK ESCOBAR by CLAYBURY DUNKIRK DHL2001651(E2)

Service Details: AI 04/10/23

Full sister retained

45 OLDFORD**PRE2201514(2)****Born: 28/02/2022****Inbreeding coefficient: 5.1**

Sire: OLDFORD EISENHOWER PRE2101354(E1) by MELLOR VALE DAKOTA

Dam: PRE2001297(1) by KNOCK YANKEE HAK1601045(3)

	Growth	Adult Size	Repro.	Carcass	Index	Index Acc.
Terminal	£2.11	N/A	£-0.02	£-0.40	£1.69	69%
Replacement	£2.80	£-0.52	£0.37	£-0.53	£2.12	64%

Service Sire: MIDLOCK ESCOBAR by CLAYBURY DUNKIRK DHL2001651(E2)

Service Details: Natural 20/10/23

Smart gimmer with exceptional carcass

Service Sires**KNAP GRAND MASTER****CKP2307437(E2)****Born: 15/02/2023****Inbreeding coefficient: 4.5**

Sire: HADDO FABIO KWJ2202475(1) by HARESTONE ELDORADO

Dam: CKP2105846(E1) by SPORTSMANS DEAL BREAKER BGS2004511(E1)

Purchased jointly for 5000gns

MIDLOCK ESCOBAR**WKM2133488(E2)****Born: 11/03/2021****Inbreeding coefficient: 0.4**

Sire: CLAYBURY DUNKIRK DHL2001651(E2) by STRATHBOGIE CANNONBALL

Dam: WKM1721254(1) by CLINTERTY YUGA KHAN BBY1601056(E)

	Growth	Adult Size	Repro.	Carcass	Index	Index Acc.	Ranking
Terminal	£7.21	N/A	£-0.04	£-0.98	£6.19	88%	TOP 10%
Replacement	£9.57	£-2.46	£0.73	£-1.30	£6.54	84%	TOP 10%

Bred sons to 2400gns and daughters to 3000gns

TOM MORGAN**MORWOOD****QMQ****46 MORWOOD****QMQ2202679(E2)****Born: 13/02/2022****Inbreeding coefficient: 2.4**

Sire: CASTLECAIRN DOODLEBUG RNA2001134(E1) by HAYMOUNT CRACKERJACK

Dam: QMQ2002472(E1) by GARNGOUR ALABAMA CJN1704960(E)

Service Sire: TEIGLUM GAFFER by COSYN TEXELS FORMULA ONE BCY2201133(E1)

Service Details: Details at Time of Sale

47 MORWOOD**QMQ2202698(2)****Born: 16/03/2022****Inbreeding coefficient: 0.5**

Sire: MIDLOCK DE NIRO WKM2030255(E2) by SPORTSMANS CANNON BALL

Dam: QMQ1902407(2) by DEVERONVALE AEROSTAR MG1701098(1)

Service Sire: TEIGLUM GAFFER by COSYN TEXELS FORMULA ONE BCY2201133(E1)

Service Details: Details at Time of Sale

48 MORWOOD**QMQ2202682(E2)****Born: 13/02/2022****Inbreeding coefficient: 2.4**

Sire: CASTLECAIRN DOODLEBUG RNA2001134(E1) by HAYMOUNT CRACKERJACK

Dam: QMQ2002472(E1) by GARNGOUR ALABAMA CJN1704960(E)

Service Sire: TEIGLUM GAFFER by COSYN TEXELS FORMULA ONE BCY2201133(E1)

Service Details: Details at Time of Sale

49 MORWOOD**QMQ2202657(E1)****Born: 10/02/2022****Inbreeding coefficient: 2.8**

Sire: HAYMOUNT EYE OF THE BEHOLDER AWJ2102555(E2) by SPORTSMANS DIRTY HARRY

Dam: BCM1700518(E) by CLINTERTY YOGI BEAR BBY1601064(E)

Service Sire: TEIGLUM GAFFER by COSYN TEXELS FORMULA ONE BCY2201133(E1)

Service Details: Details at Time of Sale

50 MORWOOD**QMQ2202683(E2)****Born: 13/02/2022****Inbreeding coefficient: 2.4**

Sire: CASTLECAIRN DOODLEBUG RNA2001134(E1) by HAYMOUNT CRACKERJACK

Dam: QMQ2002472(E1) by GARNGOUR ALABAMA CJN1704960(E)

Service Sire: TEIGLUM GAFFER by COSYN TEXELS FORMULA ONE BCY2201133(E1)

Service Details: Details at Time of Sale

- 51 MORWOOD** **QMQ2202653(E1)** **Born: 10/02/2022**
Inbreeding coefficient: 1.6
 Sire: HAYMOUNT EYE OF THE BEHOLDER AWJ2102555(E2) by SPORTSMANS DIRTY HARRY
 Dam: BGS1803086(E1) by FORDAFOURIE AMALERT LAF1700467(E)
 Service Sire: TEIGLUM GAFFER by COSYN TEXELS FORMULA ONE BCY2201133(E1)
 Service Details: Details at Time of Sale
- 52 MORWOOD** **QMQ2202651(E1)** **Born: 09/02/2022**
Inbreeding coefficient: 1.6
 Sire: HAYMOUNT EYE OF THE BEHOLDER AWJ2102555(E2) by SPORTSMANS DIRTY HARRY
 Dam: BGS1803086(E1) by FORDAFOURIE AMALERT LAF1700467(E)
 Service Sire: TEIGLUM GAFFER by COSYN TEXELS FORMULA ONE BCY2201133(E1)
 Service Details: Details at Time of Sale
- 53 MORWOOD** **QMQ2202687(E2)** **Born: 13/02/2022**
Inbreeding coefficient: 0.4
 Sire: CASTLECAIRN DOODLEBUG RNA2001134(E1) by HAYMOUNT CRACKERJACK
 Dam: QMQ2002465(E1) by PROCTERS CASINO ROYALE PFD1903201(E1)
 Service Sire: TEIGLUM GAFFER by COSYN TEXELS FORMULA ONE BCY2201133(E1)
 Service Details: Details at Time of Sale
- 54 MORWOOD** **QMQ2202694(2)** **Born: 15/03/2022**
Inbreeding coefficient: 0.4
 Sire: MIDLOCK DE NIRO WKM2030255(E2) by SPORTSMANS CANNON BALL
 Dam: MJH1806025(2) by STRATHBOGIE ALI G IJS1701602(E)
 Service Sire: TEIGLUM GAFFER by COSYN TEXELS FORMULA ONE BCY2201133(E1)
 Service Details: Details at Time of Sale
- 55 MORWOOD** **QMQ2202659(E1)** **Born: 10/02/2022**
Inbreeding coefficient: 1.8
 Sire: CASTLECAIRN DOODLEBUG RNA2001134(E1) by HAYMOUNT CRACKERJACK
 Dam: BCM1500349(1) by PROCTERS VENTURA PFD1403565(E)
 Service Sire: TEIGLUM GAFFER by COSYN TEXELS FORMULA ONE BCY2201133(E1)
 Service Details: Details at Time of Sale
- 56 MORWOOD** **QMQ2202681(E2)** **Born: 13/02/2022**
Inbreeding coefficient: 0.4
 Sire: CASTLECAIRN DOODLEBUG RNA2001134(E1) by HAYMOUNT CRACKERJACK
 Dam: QMQ2002465(E1) by PROCTERS CASINO ROYALE PFD1903201(E1)
 Service Sire: TEIGLUM GAFFER by COSYN TEXELS FORMULA ONE BCY2201133(E1)
 Service Details: Details at Time of Sale
- Service Sires**
TEIGLUM GAFFER **CFT2301162(E2)** **Born: 17/02/2023**
Inbreeding coefficient: 1.5
 Sire: COSYN TEXELS FORMULA ONE BCY2201133(E1) by RHAADR EXPLORER
 Dam: CFT1906359(E2) by KNOCK BANTASTIC HAK1801293(1)
 Reserve Champion Lanark Club Sale 2023

Ewe Lambs

B, R & D LOWE		TIKI	XLX
57	TIKI	XLX2300035(E1)	Born: 10/02/2023
Inbreeding coefficient: 3.9			
Sire: AULHOUSEBURN FREAKY FRIDAY BYZ2231796(E1) by SEAFORDE EMPIRE KING			
Dam: MZH2100720(E2) by PROCTERS CHUMBA WUMBA PFD1903226(2)			
Dam is 1.6K Hexel Ewe Lamb who is out of 10K Glanllyn Gimmer. Sired by 7.5K AHB Freaky Friday bred sons to 12K			
58	TIKI	XLX2300043(E1)	Born: 13/02/2023
Inbreeding coefficient: 8.6			
Sire: OLDFORD EYE CANDY PRE2101367(E1) by MELLOR VALE DAKOTA			
Dam: MZH2100720(E2) by PROCTERS CHUMBA WUMBA PFD1903226(2)			
Dam is 1.6K Hexel Ewe Lamb who is out of 10K Glanllyn Gimmer. Sire purchased privately from Oldford by Dakota			
MR BEN LOWE		RUE WOOD	LWE
59	RUE WOOD	LWE2300543(E1)	Born: 12/02/2023
Inbreeding coefficient: 4.4			
Sire: TEIGLUM FIRESTARTER CFT2200711(E1) by KNOCK EASTWOOD			
Dam: LWE2100295(E1) by SPORTSMANS BATMAN BGS1803201(E1)			
Dam is maternal sister to our 3rd RWAS Ewe Lamb 2019 out of our Cressage Ewe. Sire Champ Snr Stock Tup NWTBC			
60	RUE WOOD	LWE2300558(E1)	Born: 15/02/2023
Inbreeding coefficient: 0.5			
Sire: MELLOR VALE DAKOTA BCM2000850(E1) by GARNGOUR CRAFTSMAN			
Dam: BPY1501186(3) by PROCTERS VENTURA PFD1403565(E)			
Sired by the renowned 12K Dakota and out of our 8 year old Coley ewe who's bred many 4 figure females to 1.8K			
MR M P HARDING		HARDY	HMH
61	HARDY	HMH2302598(1)	Born: 02/03/2023
Inbreeding coefficient: 6.5			
Sire: HARDY ELVIS HMH2102404(2) by OWL VALLEY DENNIS THE MENACE			
Dam: HMH1901930(1) by MILLEND ALL GOLD WCM1702095(2)			
62	HARDY	HMH2302654(2)	Born: 17/03/2023
Inbreeding coefficient: 0.2			
Sire: HARDY ELVIS HMH2102404(2) by OWL VALLEY DENNIS THE MENACE			
Dam: HMH1701634(1) by PENPARC VIAGRO SJP1404018(1)			
JOSEPH WILLIAMS		OWL VALLEY	WPH
63	OWL VALLEY	WPH2304936(E2)	Born: 10/02/2023
Inbreeding coefficient: 0.6			
Sire: RHAEADR ENTREPRENEUR ENM2102464(E1) by SPORTSMANS DARE DEVIL			
Dam: WPH1802234(E1) by CLINTERTY YOGI BEAR BBY1601064(E)			
Dam bred last year's sale champion			
64	OWL VALLEY	WPH2304922(E2)	Born: 12/02/2023
Inbreeding coefficient: 0.6			
Sire: RHAEADR ENTREPRENEUR ENM2102464(E1) by SPORTSMANS DARE DEVIL			
Dam: WPH1802234(E1) by CLINTERTY YOGI BEAR BBY1601064(E)			
By Rhaeadr Entrepreneur which has bred exceptionally well for many flocks			
65	OWL VALLEY	WPH2304933(E2)	Born: 10/02/2023
Inbreeding coefficient: 0.6			
Sire: RHAEADR ENTREPRENEUR ENM2102464(E1) by SPORTSMANS DARE DEVIL			
Dam: WPH1802234(E1) by CLINTERTY YOGI BEAR BBY1601064(E)			
Dam best breeding ewe in the flock			
66	OWL VALLEY	WPH2304920(E2)	Born: 13/02/2023
Inbreeding coefficient: 0.6			
Sire: RHAEADR ENTREPRENEUR ENM2102464(E1) by SPORTSMANS DARE DEVIL			
Dam: WPH1802234(E1) by CLINTERTY YOGI BEAR BBY1601064(E)			
Full sister to previous lots			

67	OWL VALLEY	WPH2304938(E2)	Born: 11/02/2023
	Inbreeding coefficient: 0.6		
	Sire: RHAADR ENTREPRENEUR ENM2102464(E1) by SPORTSMANS DARE DEVIL		
	Dam: WPH1802234(E1) by CLINTERTY YOGI BEAR BBY1601064(E)		
68	OWL VALLEY	WPH2304928(E2)	Born: 11/02/2023
	Inbreeding coefficient: 0.6		
	Sire: RHAADR ENTREPRENEUR ENM2102464(E1) by SPORTSMANS DARE DEVIL		
	Dam: WPH1802234(E1) by CLINTERTY YOGI BEAR BBY1601064(E)		
69	OWL VALLEY	WPH2304932(E2)	Born: 10/02/2023
	Inbreeding coefficient: 0.6		
	Sire: RHAADR ENTREPRENEUR ENM2102464(E1) by SPORTSMANS DARE DEVIL		
	Dam: WPH1802234(E1) by CLINTERTY YOGI BEAR BBY1601064(E)		
	WILLIAM RIDGE	RIDGEWAY	RWX
70	RIDGEWAY	RWX2308348(E1)	Born: 13/02/2023
	Inbreeding coefficient: 4.5		
	Sire: AULHOUSEBURN EVER SO CLEVER BYZ2129062(E1) by SPORTSMANS DOUBLE DIAMOND		
	Dam: MZU2003793(E1) by RHAADR BEST OF THE BEST ENM1802006(E1)		
71	RIDGEWAY	RWX2308351(E1)	Born: 09/04/2023
	Inbreeding coefficient: 1.3		
	Sire: PLASUCHA FEARLESS BFE2212142(E1) by SPORTSMANS EXPRESS		
	Dam: HAK2001529(E2) by SPORTSMANS CHIEFTAIN BGS1903722(E1)		
72	RIDGEWAY	RWX2308350(E1)	Born: 09/02/2023
	Inbreeding coefficient: 0.8		
	Sire: SALTCHOTES E CLASS PTJ2100047(E2) by CRAIG DOUGLAS DANCER		
	Dam: BYZ2129088(E1) by SPORTSMANS DOUBLE DIAMOND BGS2004411(E1)		
73	RIDGEWAY	RWX2308358(E1)	Born: 08/02/2023
	Inbreeding coefficient: 1.3		
	Sire: PLASUCHA FEARLESS BFE2212142(E1) by SPORTSMANS EXPRESS		
	Dam: HAK2001529(E2) by SPORTSMANS CHIEFTAIN BGS1903722(E1)		
74	RIDGEWAY	RWX2308359(E1)	Born: 06/02/2023
	Inbreeding coefficient: 0.8		
	Sire: SALTCHOTES E CLASS PTJ2100047(E2) by CRAIG DOUGLAS DANCER		
	Dam: BYZ2129088(E1) by SPORTSMANS DOUBLE DIAMOND BGS2004411(E1)		

Final Dispersal of the Trefonnen Flock		
MR ROY HUGHES	TREFONNEN	HRT
75	TREFONNEN HRT2203879(2) Inbreeding coefficient: 0.6 Sire: RHAEADR EMBASSY ENM2102465(E1) by SPORTSMANS DARE DEVIL Dam: HRT2003543(2) by SPORTSMANS CAPTAIN BGS1903696(E1) Service Sire:RHAEADR GLAMOUR BOY by STREATLAM FIRE CRACKER TWW2201395(E1) Service Details: Natural service Service sire Glamour Boy's dam sold for 20K. Was full sister to 160k 2022 RFC&RE sire of the year	Born: 12/03/2022
76	TREFONNEN HRT2203857(E1) Inbreeding coefficient: 29.9 Sire: RHAEADR EMBASSY ENM2102465(E1) by SPORTSMANS DARE DEVIL Dam: ENM1802019(E1) by KELSO PAVAROTTI MBZ09002(0) Service Sire:RHAEADR GLAMOUR BOY by STREATLAM FIRE CRACKER TWW2201395(E1) Service Details: Natural service	Born: 12/02/2022
77	TREFONNEN HRT2203855(3) Inbreeding coefficient: 1.3 Sire: RHAEADR EASY RIDER ENM2102469(E1) by SPORTSMANS DARE DEVIL Dam: HRT1702389(1) by CHARBEN WINNER VBC1501594(E) Service Sire:RHAEADR GLAMOUR BOY by STREATLAM FIRE CRACKER TWW2201395(E1) Service Details: Natural service	Born: 11/02/2022
78	TREFONNEN HRT2203881(2) Inbreeding coefficient: 0.9 Sire: RHAEADR EASY RIDER ENM2102469(E1) by SPORTSMANS DARE DEVIL Dam: HRT1903224(2) by GLENSIDE BUCKS FIZZ II FPG1801618(2) Service Sire:RHAEADR GLAMOUR BOY by STREATLAM FIRE CRACKER TWW2201395(E1) Service Details: Natural service	Born: 12/03/2022
79	TREFONNEN HRT2203853(1) Inbreeding coefficient: 0.9 Sire: RHAEADR EASY RIDER ENM2102469(E1) by SPORTSMANS DARE DEVIL Dam: HRT1903255(1) by GLENSIDE BUCKS FIZZ II FPG1801618(2) Service Sire:RHAEADR GLAMOUR BOY by STREATLAM FIRE CRACKER TWW2201395(E1) Service Details: Natural service	Born: 09/02/2022
80	TREFONNEN HRT2203861(2) Inbreeding coefficient: 0.8 Sire: RHAEADR EASY RIDER ENM2102469(E1) by SPORTSMANS DARE DEVIL Dam: HRT1802715(2) by CHARBEN WINNER VBC1501594(E) Service Sire:RHAEADR GLAMOUR BOY by STREATLAM FIRE CRACKER TWW2201395(E1) Service Details: Natural service	Born: 01/03/2022
81	TREFONNEN HRT2203886(1) Inbreeding coefficient: 0.6 Sire: RHAEADR EMBASSY ENM2102465(E1) by SPORTSMANS DARE DEVIL Dam: HRT2003524(1) by SPORTSMANS CAPTAIN BGS1903696(E1) Service Sire:RHAEADR GLAMOUR BOY by STREATLAM FIRE CRACKER TWW2201395(E1) Service Details: Natural service	Born: 23/03/2022
82	TREFONNEN HRT2203866(3) Inbreeding coefficient: 1.3 Sire: RHAEADR EASY RIDER ENM2102469(E1) by SPORTSMANS DARE DEVIL Dam: HRT1802730(3) by CHARBEN WINNER VBC1501594(E) Service Sire:RHAEADR GLAMOUR BOY by STREATLAM FIRE CRACKER TWW2201395(E1) Service Details: Natural service	Born: 02/03/2022
83	TREFONNEN HRT2203870(3) Inbreeding coefficient: 1.0 Sire: RHAEADR EMBASSY ENM2102465(E1) by SPORTSMANS DARE DEVIL Dam: HRT2003535(2) by GLENSIDE BUCKS FIZZ II FPG1801618(2) Service Sire:RHAEADR GLAMOUR BOY by STREATLAM FIRE CRACKER TWW2201395(E1) Service Details: Natural service	Born: 10/03/2022

84	TREFONNEN	HRT2203863(2)	Born: 01/03/2022
Inbreeding coefficient: 1.0			
Sire: RHAADR EASY RIDER ENM2102469(E1) by SPORTSMANS DARE DEVIL			
Dam: HRT1903230(1) by GLENSIDE BUCKS FIZZ II FPG1801618(2)			
Service Sire:RHAADR GLAMOUR BOY by STREATLAM FIRE CRACKER TWW2201395(E1)			
Service Details: Natural service			
85	TREFONNEN	HRT2203859(2)	Born: 28/02/2022
Inbreeding coefficient: 1.5			
Sire: RHAADR EASY RIDER ENM2102469(E1) by SPORTSMANS DARE DEVIL			
Dam: HRT1903244(1) by MELLOR VALE BIG BROTHER BCM1800572(E1)			
Service Sire:RHAADR GLAMOUR BOY by STREATLAM FIRE CRACKER TWW2201395(E1)			
Service Details: Natural service			
86	TREFONNEN	HRT2203860(2)	Born: 28/02/2022
Inbreeding coefficient: 1.5			
Sire: RHAADR EASY RIDER ENM2102469(E1) by SPORTSMANS DARE DEVIL			
Dam: HRT1903244(1) by MELLOR VALE BIG BROTHER BCM1800572(E1)			
Service Sire:RHAADR GLAMOUR BOY by STREATLAM FIRE CRACKER TWW2201395(E1)			
Service Details: Natural service			
Service Sires			
	RHAADR GLAMOUR BOY	ENM2302708(E1)	Born: 03/02/2023
Inbreeding coefficient: 3.7			
Sire: STREATLAM FIRE CRACKER TWW2201395(E1) by ETTRICK EARTHQUAKE			
Dam: ENM2102442(E1) by SPORTSMANS DAR DEVIL BGS2004557(E2)			

Nigel Farr FARM SERVICES

*Delivering
agricultural equipment
for over 40 years!*

**01743
884707**



**hales
SAWMILLS**

IAE

KRAMP

FLO GAS

**MORRIS
LUBRICANTS**

BIRKDALE

- ▶ Cattle handling systems
- ▶ Water troughs & feeders
- ▶ Fence posts & stock fencing
- ▶ Building materials & supplies
- ▶ Plumbing & drainage materials
- ▶ Silage sheets & baler twine
- ▶ Farm gates
- ▶ Ironmongery & gate fittings
- ▶ Electric fencing equipment
- ▶ Agri oils & lubricants
- ▶ Replacement plough parts
- ▶ Bottled Gas

**Visit us at our shop
in Westbury, Shrewsbury
or email: info@nigelfarrfarmservices.co.uk**

CLAYBURY FLOCK

Claybury Texels Reduction Sale 2023

Claybury Texels will have forward: **22 Flock Ewes & 20 Yearling Ewes**

Champion Flock Shropshire & Borders Texel Club 2023

All with fantastic proven pedigrees and all sold in lamb to some very exciting Service Sires (Scanning details will be announced on the day of sale)

Claybury Texels was established back in 1991 with the purchase of 2 in lamb ewes with the primary aim to produce top quality commercial rams to sell at the local club sales and privately. We never dreamt that back in 2002 we would break the ram lamb record where we sold Claybury Istabraq for 88,000gns and more latterly the ewe lamb record at 8,500gns. Subsequently both records have since been broken.

We have had recent success in the show and sale ring. Selling Claybury Basic Instinct for 30,000gns at Carlisle & Claybury Dunkirk for 34,000gns in 2020 at the Lanark Premier Sale. Dunkirk has proven to be a influential breeder selling ram lambs to 52,000gns and Yearling rams to 52,000gns. Subsequently we have put forward full sisters or relations as part of this reduction sale.

We try and run the sheep as commercially as possible on a grass based system with forage crops used over winter to supplement the ewe lambs and x bred ewes.

We feel this are a fantastic bunch of ewes to fit everyone's pockets and are excited to offer these females for sale all of which have excellent pedigrees. We are also offering previous and current Donor ewes as part of the sale.

We are confident that these females on offer will offer something for everyone and should make a useful genetic contribution to any breeders and can be an outstanding base for any new flock within the Texel breed.

Flock Health Status:

We have always practised a preventative health plan:

- Part of the Recording scheme and all lambs weighed & ultrasound scanned at 12 weeks old
- On the Hep P system- received 15th August 2023 (due booster 4 weeks prior to lambing)
 - Yearling Ewes received Toxovax – 17th July 2023
 - MV Accredited
 - Scrapie Monitored
 - Lambs Scabi-Vac – approx 48 hrs after birth
 - Ewes & Gimmers Wormed: 12th September
- Ewes & Gimmers Multi Vit Mineral drenched prior to tugging.

We wish all the prospective purchasers the very best of luck with the purchase of any Claybury Stock.

Look forward to seeing you at the sale.

James Draper

Claybury Sires of Ewes & Gimmers

- **Rhaeadr Explorer** – Male and Overall Champion English Premier Sale 2021. Purchased for 3,500gns. Has sired sons to 4,000gns and ewe lambs to 1500gns.



- **Wilodge Bravo** – Purchased for 5400gns at the Welsh Premier 2018. 1st Prize yearling Ram RWAS 2019. Producing massive progeny with huge backends and tops. Sired sons to 2,000gns. Dams are breeding – dam bred Scolton Field Marshall sold for 24,000gns and Scolton Fortress at 10,000gns NSA 2023.



- **Mellor Vale Dakota** – Jointly Purchased for 12,000gns at Lanark 2020. Outstanding breeding ram. Sons to 36,000gns, 30,000gns (twice) and ewe lambs to 1500gns.



- **Claybury Delta Force** – Full brother to 34,000gns Claybury Dunkirk (pictured). Sired sons to 3,600gns and daughters to 4,000gns.



Claybury Service Sires:

- **Knap Grizzly Bear – CKP2307491**

Purchased at Ruthin Texel Club Sale where he stood Male and Overall Champion and was purchased for 3800gns. We eagerly await his progeny.



- **Ettrick Fu Fighter – GGH2214239**

Purchased at Kelso 2023 for £1500. He was 2nd Prize at Lesmahagow Show. His maternal brother was sold for 5500gns Ettrick Eagerbeaver. ET sisters are the best stock gimmers at Ettrick. Dam ET sister to dam of 26,000gns Ettrick Earthquake. Same family as 17,000gns & 10,000gns Kelso 2022 rams.



- **Claybury Gladiator – DHL2302229**

No.1 lamb this year. Retained for size, carcase and breed character. His Dam and GGDam are being retained. His GGDam is for sale within the reduction sale. We eagerly await his progeny.



- **Strathbogie Cannonball – IJS1903555**

Purchased for 9,000gns. Has bred exceptionally well. He bred 34,000gns Claybury Dunkirk who has gone onto breed ram lambs at 52,000gns and Yearling Rams at 52,000gns. Another Cannonball son Claybury Dazzler bred sons to 40,000gns which onto win Overall Texel Champion at the RWAS 2023. Daughters of Cannonball have been sold for 8,000gns

- **Cowal Firepower – CKC2214669**

Purchased for 6,500gns at Lanark 2022. Index 326 Top 1%. His Maternal sister was RWAS Champion 2022.

87 CLAYBURY

DHL1801295(E1)

Born: 17/02/2018

Inbreeding coefficient: 2.7

Sire: STRATHBOGIE YOU! IJS1600756(E) by MILLAR'S WINDBROOK

Dam: DHL1400744(2) by STRATHBOGIE UPGRADE IJS1300200(E)

	Growth	Adult Size	Repro.	Carcass	Index	Index Acc.	Ranking
Terminal	£3.52	N/A	£0.04	£-0.16	£3.39	76%	
Replacement	£4.67	£-0.35	£1.31	£-0.22	£5.42	74%	TOP 25%

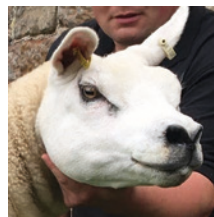
Service Sire: CLAYBURY GLADIATOR by RHAADR FOUR SQUARE ENM2202620(E1)

Service Details: Served 17/10/2023

Dam bred sons to 2,500gns Claybury Beowulf Carlisle 2018

Scanning results: Pending

DAUGHTER OF LOT 87



88 CLAYBURY

DHL1801377(2)

Born: 01/04/2018

Inbreeding coefficient: 6.8

Sire: SCHOLARS YAHOO YWM1600531(E) by EDEN VALLEY WIZ KID

Dam: DHL1601030(E) by STANTON VANTAGE II WPS1400599(E)

	Growth	Adult Size	Repro.	Carcass	Index	Index Acc.	Ranking
Terminal	£4.22	N/A	£0.03	£-0.42	£3.83	75%	
Replacement	£5.60	£-1.04	£-0.03	£-0.56	£3.98	71%	

Service Sire: CLAYBURY GLADIATOR by RHAADR FOUR SQUARE ENM2202620(E1)

Service Details: AI 30/9/2023

Embryos have been collected from this animal.

Has been Flushed. Fantastic breeding ewe. Daughters retained. GDam bred sons to 4,000gns.

Scanning Results: Twins



89 CLAYBURY

DHL1801330(2)

Born: 20/02/2018

Inbreeding coefficient: 5.8

Sire: SCHOLARS YAHOO YWM1600531(E) by EDEN VALLEY WIZ KID

Dam: DHL1601064(E) by STANTON VANTAGE II WPS1400599(E)

	Growth	Adult Size	Repro.	Carcass	Index	Index Acc.	Ranking
Terminal	£2.48	N/A	£0.06	£-0.73	£1.81	76%	
Replacement	£3.29	£-0.68	£0.46	£-0.97	£2.10	73%	

Service Sire: COWAL FIREPOWER by COWAL EXCALIBUR CKC2113582(E1)

Service Details: AI 30/9/2023

Same family as 5500gns Claybury Legacy. Bred Female Champion Shrewsbury Club Sale 2021. One Quartered.

Dam of 106

Scanning Results: Single

90 CLAYBURY

DHL1901522(3)

Born: 12/02/2019

Inbreeding coefficient: 0.1

Sire: WILODGE BRAVO TIP1801861(E1) by BALTIER THUNDERBIRD

Dam: DHL1701127(E) by STANTON VANTAGE II WPS1400599(E)

	Growth	Adult Size	Repro.	Carcass	Index	Index Acc.	Ranking
Terminal	£6.31	N/A	£0.02	£-0.94	£5.39	77%	TOP 25%
Replacement	£8.38	£-1.83	£0.26	£-1.25	£5.55	73%	TOP 25%

Service Sire: CLAYBURY GLADIATOR by RHAADR FOUR SQUARE ENM2202620(E1)

Service Details: Served 16/10/2023

Old Flush Ewe. Massive Bravo daughter. Same family as Claybury Badass and G.dam of Claybury Gladiator.

Dam of lot 100 & 105

Scanning Results: Pending

91 CLAYBURY

DHL1901528(E1)

Born: 12/02/2019

Inbreeding coefficient: 0.2

Sire: WILODGE BRAVO TIP1801861(E1) by BALTIER THUNDERBIRD

Dam: DHL1701208(E) by STANTON VANTAGE II WPS1400599(E)

	Growth	Adult Size	Repro.	Carcass	Index	Index Acc.	Ranking
Terminal	£6.36	N/A	£0.02	£-0.78	£5.60	74%	TOP 25%
Replacement	£8.44	£-1.74	£0.12	£-1.03	£5.78	71%	TOP 25%

Service Sire: CLAYBURY GLADIATOR by RHAADR FOUR SQUARE ENM2202620(E1)

Service Details: Served 17/10/2023

Same family as 4,000gns Claybury Deliverance and 2,500gns Claybury Extra Special.

Scanning Results: Pending

92 CLAYBURY**DHL1901592(1)****Born: 14/03/2019****Inbreeding coefficient: 2.7**

Sire: STRATHBOGIE YOUI IJS1600756(E) by MILLAR'S WINDBROOK

Dam: DHL1400744(2) by STRATHBOGIE UPGRADE IJS1300200(E)

	Growth	Adult Size	Repro.	Carcass	Index	Index Acc.	Ranking
Terminal	£5.94	N/A	£0.04	£-0.32	£5.66	79%	TOP 25%
Replacement	£7.88	£-1.21	£1.26	£-0.42	£7.52	76%	TOP 5%

Service Sire: ETTRICK FU FIGHTER by NEW VIEW ELECTRIFYING TWF2101086(E)

Service Details: AI 30/9/2023

Ex Flush Ewe. Bred Female Champion Ewe Lamb 1500gns at NSA 2021. Dam of lot 108

Scanning Results: Single

**93 CLAYBURY****DHL1901587(2)****Born: 08/03/2019****Inbreeding coefficient: 1.0**

Sire: WILODGE BRAVO TIP1801861(E1) by BALTIER THUNDERBIRD

Dam: DHL1701111(E) by COWAL YOUR MY BOY CKC1607584(2)

	Growth	Adult Size	Repro.	Carcass	Index	Index Acc.
Terminal	£4.84	N/A	£-0.01	£-0.34	£4.49	73%
Replacement	£6.43	£-1.37	£0.60	£-0.45	£5.21	70%

Service Sire: ETTRICK FU FIGHTER by NEW VIEW ELECTRIFYING TWF2101086(E1)

Service Details: AI 30/9/2023

Fantastic Wilodge Bravo daughter.

Scanning Results: Single

**94 CLAYBURY****DHL1901488(E1)****Born: 11/02/2019****Inbreeding coefficient: 0.2**

Sire: WILODGE BRAVO TIP1801861(E1) by BALTIER THUNDERBIRD

Dam: DHL1701208(E) by STANTON VANTAGE II WPS1400599(E)

	Growth	Adult Size	Repro.	Carcass	Index	Index Acc.	Ranking
Terminal	£5.85	N/A	£0.02	£-0.24	£5.62	73%	TOP 25%
Replacement	£7.76	£-1.67	£0.27	£-0.32	£6.04	70%	TOP 25%

Service Sire: ETTRICK FU FIGHTER by NEW VIEW ELECTRIFYING TWF2101086(E1)

Service Details: Served 16/10/2023

Dam bred sons to 4,000gns Claybury Deliverance and 2,500gns Claybury Extra Special

Scanning Results: Pending

95 CLAYBURY**DHL1901508(E1)****Born: 12/02/2019****Inbreeding coefficient: 0.6**

Sire: WILODGE BRAVO TIP1801861(E1) by BALTIER THUNDERBIRD

Dam: DHL1400744(2) by STRATHBOGIE UPGRADE IJS1300200(E)

	Growth	Adult Size	Repro.	Carcass	Index	Index Acc.	Ranking
Terminal	£4.64	N/A	£-0.02	£0.02	£4.64	76%	TOP 25%
Replacement	£6.16	£-1.25	£0.58	£0.03	£5.52	74%	TOP 25%

Service Sire: STRATHBOGIE CANNONBALL by SPORTSMANS BENCHMARK BGS1803121(E1)

Service Details: AI 30/9/2023

GDam bred 2,500gns Claybury Beowulf

Scanning Results: Single

96 CLAYBURY**DHL2001640(E2)****Born: 18/02/2020****Inbreeding coefficient: 0.9**

Sire: STRATHBOGIE CANNONBALL US1903555(E2) by SPORTSMANS BENCHMARK

Dam: DHL1801288(1) by SCHOLARS YAHOO YWM1600531(E)

	Growth	Adult Size	Repro.	Carcass	Index	Index Acc.	Ranking
Terminal	£5.12	N/A	£-0.06	£-0.37	£4.69	74%	
Replacement	£6.79	£-1.60	£0.82	£-0.49	£5.52	70%	TOP 25%

Service Sire:KNAP GRIZZLY BEAR by HADDO FALCON KWJ2202414(E1)

Service Details:Served 17/10/2023

A fantastic ewe. Full sister to 34,000gns Claybury Dunkirk.

Daughter has been retained. One Quartered.

Scanning Results: Pending

**CLAYBURY DUNKIRK****FULL BROTHER TO
LOT 96****97 CLAYBURY****DHL2001710(3)****Born: 19/02/2020****Inbreeding coefficient: 0.9**

Sire: WILODGE BRAVO TIP1801861(E1) by BALTIER THUNDERBIRD

Dam: DHL1701264(2) by COWAL YOUR MY BOY CKC1607584(2)

	Growth	Adult Size	Repro.	Carcass	Index	Index Acc.	Ranking
Terminal	£5.65	N/A	£-0.04	£-0.75	£4.86	71%	
Replacement	£7.50	£-1.66	£0.25	£-1.00	£5.08	68%	

Service Sire:CLAYBURY GLADIATOR by RHAEDR FOUR SQUARE ENM2202620(E1)

Service Details:Served 27/10/2023

Bred 1st Prize ewe lamb NSA 2022. Maternal sister has been retained.

Scanning Results: Pending

98 CLAYBURY**DHL2101798(2)****Born: 10/02/2021****Inbreeding coefficient: 1.5**

Sire: HEXEL DJANGO MZH2000640(E1) by PROCTERS CHUMBA WUMBA

Dam: CKC1910985(E2) by AULDHOUSEBURN BOSS BYZ1820746(E2)

	Growth	Adult Size	Repro.	Carcass	Index	Index Acc.	Ranking
Terminal	£8.08	N/A	£-0.01	£-0.78	£7.29	71%	TOP 5%
Replacement	£10.73	£-2.98	£0.52	£-1.03	£7.23	67%	TOP 5%

Service Sire:CLAYBURY GLADIATOR by RHAEDR FOUR SQUARE ENM2202620(E1)

Service Details:AI 30/9/2023

Dam purchased for 2,200gns from Cowal.

DAM OF LOT 98

Scanning Results: Twins

**99 CLAYBURY****DHL2101953(2)****Born: 28/03/2021****Inbreeding coefficient: 3.0**

Sire: CLAYBURY DELTA FORCE DHL2001637(E2) by STRATHBOGIE CANNONBALL

Dam: DHL1901505(E1) by WILODGE BRAVO TIP1801861(E1)

	Growth	Adult Size	Repro.	Carcass	Index	Index Acc.	Ranking
Terminal	£6.83	N/A	£-0.02	£-1.03	£5.78	70%	TOP 25%
Replacement	£9.06	£-2.05	£0.34	£-1.36	£5.99	66%	TOP 25%

Service Sire:ETTRICK FU FIGHTER by NEW VIEW ELECTRIFYING TWF2101086(E1)

Service Details:AI 30/9/2023

Massive Delta Force ewe. GDam bred sons to 4,000gns and 2500gns. Dam best Bravo daughter bred.

Scanning Results: Single



100 CLAYBURY**DHL2101891(E1)****Inbreeding coefficient: 1.2**

Sire: STRATHBOGIE CANNONBALL IJS1903555(E2) by SPORTSMANS BENCHMARK

Dam: DHL1901522(3) by WILODGE BRAVO TIP1801861(E1)

	Growth	Adult Size	Repro.	Carcass	Index	Index Acc.	Ranking
Terminal	£6.18	N/A	£-0.07	£-0.15	£5.96	72%	TOP 25%
Replacement	£8.20	£-1.91	£0.37	£-0.20	£6.46	68%	TOP 10%

Service Sire: ETTRICK FU FIGHTER by NEW VIEW ELECTRIFYING TWF2101086(E1)

Service Details: AI 30/9/2023

Fantastic ewe. Full sister to Dam of Claybury Gladiator. Daughter of lot 90

Scanning Results: Single

Born: 21/02/2021**101 CLAYBURY****DHL2101895(3)****Inbreeding coefficient: 6.2**

Sire: CLAYBURY DELTA FORCE DHL2001637(E2) by STRATHBOGIE CANNONBALL

Dam: DHL1701262(E) by STANTON VANTAGE II WPS1400599(E)

	Growth	Adult Size	Repro.	Carcass	Index	Index Acc.	Ranking
Terminal	£5.59	N/A	£-0.01	£-0.37	£5.21	72%	TOP 25%
Replacement	£7.42	£-1.73	£0.54	£-0.49	£5.73	68%	TOP 25%

Service Sire: ETTRICK FU FIGHTER by NEW VIEW ELECTRIFYING TWF2101086(E1)

Service Details: Served 16/10/2023

Good Breeding family. Same family as Claybury Beowulf 2,500gns

Scanning Results: Pending

Born: 21/02/2021**102 CLAYBURY****DHL2101841(1)****Inbreeding coefficient: 0.8**

Sire: STRATHBOGIE CANNONBALL IJS1903555(E2) by SPORTSMANS BENCHMARK

Dam: DHL1701123(E) by COWAL YOUR MY BOY CKC1607584(2)

	Growth	Adult Size	Repro.	Carcass	Index	Index Acc.	Ranking
Terminal	£2.83	N/A	£-0.07	£-0.16	£2.60	71%	
Replacement	£3.75	£-0.85	£0.50	£-0.21	£3.19	67%	

Service Sire: ETTRICK FU FIGHTER by NEW VIEW ELECTRIFYING TWF2101086(E1)

Service Details: AI 30/9/2023

Dam is full sister to dam of 5,000gns Claybury Dragonheart & 3,600gns Claybury Eye of the Tiger. One Quartered

Scanning Results: Triplet

Born: 19/02/2021**103 CLAYBURY****DHL2101863(E2)****Inbreeding coefficient: 0.4**

Sire: MELLOR VALE DAKOTA BCM2000850(E1) by GARNGOUR CRAFTSMAN

Dam: DHL1400744(2) by STRATHBOGIE UPGRADE IJS1300200(E)

	Growth	Adult Size	Repro.	Carcass	Index	Index Acc.	Ranking
Terminal	£6.12	N/A	£-0.02	£0.14	£6.24	75%	TOP 10%
Replacement	£8.12	£-1.78	£0.72	£0.18	£7.25	72%	TOP 5%

Service Sire: STRATHBOGIE CANNONBALL by SPORTSMANS BENCHMARK BGS1803121(E1)

Service Details: AI 30/9/2023

Same family as 2,500gns Claybury Beowulf

Scanning Results: Single

Born: 20/02/2021**104 CLAYBURY****DHL2101808(E1)****Inbreeding coefficient: 0.4**

Sire: MELLOR VALE DAKOTA BCM2000850(E1) by GARNGOUR CRAFTSMAN

Dam: DHL1400744(2) by STRATHBOGIE UPGRADE IJS1300200(E)

	Growth	Adult Size	Repro.	Carcass	Index	Index Acc.	Ranking
Terminal	£6.11	N/A	£-0.02	£-0.56	£5.52	74%	TOP 25%
Replacement	£8.10	£-1.77	£0.52	£-0.75	£6.10	71%	TOP 25%

Service Sire: CLAYBURY GLADIATOR by RHAEDR FOUR SQUARE ENM2202620(E1)

Service Details: AI 30/9/2023

One of the best Dakotas to be offered for sale.

Same family as 2,500gns Claybury Beowulf

Scanning Results: Twins

Born: 18/02/2021

105 CLAYBURY**DHL2101945(1)****Born: 18/03/2021****Inbreeding coefficient: 2.9**

Sire: CLAYBURY DELTA FORCE DHL2001637(E2) by STRATHBOGIE CANNONBALL

Dam: DHL1901522(3) by WILODGE BRAVO TIP1801861(E1)

	Growth	Adult Size	Repro.	Carcass	Index	Index Acc.
Terminal	£4.52	N/A	£-0.02	£-0.79	£3.70	72%
Replacement	£6.00	£-1.29	£0.27	£-1.05	£3.92	67%

Service Sire: ETTRICK FU FIGHTER by NEW VIEW ELECTRIFYING TWF2101086(E1)

Service Details: Served 16/10/2023

Full sister to Dam of Claybury Gladiator. Same family as Claybury Badass. Daughter of lot 90

Scanning Results: Pending

106 CLAYBURY**DHL2101893(2)****Born: 21/02/2021****Inbreeding coefficient: 0.9**

Sire: STRATHBOGIE CANNONBALL IJS1903555(E2) by SPORTSMANS BENCHMARK

Dam: DHL1801330(2) by SCHOLARS YAHOO YWM1600531(E)

	Growth	Adult Size	Repro.	Carcass	Index	Index Acc.
Terminal	£2.38	N/A	£-0.04	£-0.08	£2.25	71%
Replacement	£3.15	£-0.67	£0.52	£-0.11	£2.90	67%

Service Sire: COWAL FIREPOWER by COWAL EXCALIBUR CKC2113582(E1)

Service Details: AI 30/9/2023

Same family as 5500gns Claybury Legacy. Daughter of 89

Scanning Results: Single

107 CLAYBURY**DHL2101825(E1)****Born: 19/02/2021****Inbreeding coefficient: 3.3**

Sire: CLAYBURY DELTA FORCE DHL2001637(E2) by STRATHBOGIE CANNONBALL

Dam: DHL1801309(E1) by STRATHBOGIE YOU I IJS1600756(E)

	Growth	Adult Size	Repro.	Carcass	Index	Index Acc.
Terminal	£3.20	N/A	£0.01	£-0.84	£2.37	72%
Replacement	£4.25	£-0.66	£0.37	£-1.12	£2.84	68%

Service Sire: ETTRICK FU FIGHTER by NEW VIEW ELECTRIFYING TWF2101086(E1)

Service Details: Served 16/10/2023

Dam full sister to 30,000gns Claybury Basic Instinct. Dam bred daughters to 4,000gns Builth Babes sale 2021

Scanning Results: Pending

108 CLAYBURY**DHL2101805(E1)****Born: 18/02/2021****Inbreeding coefficient: 1.3**

Sire: MELLOR VALE DAKOTA BCM2000850(E1) by GARNGOUR CRAFTSMAN

Dam: DHL1901592(1) by STRATHBOGIE YOU I IJS1600756(E)

	Growth	Adult Size	Repro.	Carcass	Index	Index Acc.	Ranking
Terminal	£6.14	N/A	£0.01	£-0.83	£5.32	73%	TOP 25%
Replacement	£8.15	£-1.62	£0.69	£-1.10	£6.12	69%	TOP 25%

Service Sire: CLAYBURY GLADIATOR by RHAEDR FOUR SQUARE ENM2202620(E1)

Service Details: Served 10/11/2023

Full sister 1st Ewe Lamb NSA 2021 and sold for 1,500gns. Daughter of lot 92

Scanning Results: Pending

Service Sires

CLAYBURY GLADIATOR

DHL2302229(1)

Inbreeding coefficient: 0.5

Sire: RHAADR FOUR SQUARE ENM2202620(E1) by SPORTSMANS DARE DEVIL

Dam: DHL2101925(E1) by STRATHBOGIE CANNONBALL US1903555(E2)

	Growth	Adult Size	Repro.	Carcass	Index	Index Acc.	Ranking
Terminal	£7.21	N/A	£-0.03	£-0.40	£6.78	68%	TOP 5%
Replacement	£9.57	£-2.43	£0.37	£-0.53	£6.98	62%	TOP 10%

No.1 Lamb this year. Retained for size, carcass and character. Dam a tremendous ewe. GGDam and Dam retained.

ETTRICK FU FIGHTER

GGH2214239(E2)

Inbreeding coefficient: 1.8

Sire: NEW VIEW ELECTRIFYING TWF2101086(E1) by SPORTSMANS DOUBLE DIAMOND

Dam: GGH1909050(E2) by MIDCOMBE BRIGADIER MOE1800266(E1)

	Growth	Adult Size	Repro.	Carcass	Index	Index Acc.
Terminal	£5.65	N/A	£-0.09	£-1.23	£4.34	62%
Replacement	£7.50	£-1.77	£0.42	£-1.63	£4.53	60%

Purchased Kelso 2023. 2nd Prize Lesmahagow show.

Maternal brother to 5,500gns Eagerbeaver.

KNAP GRIZZLY BEAR

CKP2307491(1)

Inbreeding coefficient: 0.2

Sire: HADDO FALCON KWJ2202414(E1) by HARESTONE ELDORADO

Dam: RFY2100239(E2) by MILLARS DRIVE VMG2002289(E1)

Overall Champion Ruthin 2023. Purchased for 3,800gns.

We eagerly await his first crop of lambs

COWAL FIREPOWER

CKC2214669(E1)

Inbreeding coefficient: 0.7

Sire: COWAL EXCALIBUR CKC2113582(E1) by HEXEL DJANGO

Dam: CKC2012361(E1) by TEIGLUM CHARMER CFT1906371(E2)

	Growth	Adult Size	Repro.	Carcass	Index	Index Acc.	Ranking
Terminal	£7.56	N/A	£0.02	£-0.14	£7.44	78%	TOP 5%
Replacement	£10.04	£-2.65	£0.92	£-0.19	£8.12	72%	TOP 5%

Purchased Lanark 2022 for 6,500gns

STRATHBOGIE CANNONBALL

IJS1903555(E2)

Inbreeding coefficient: 2.5

Sire: SPORTSMANS BENCHMARK BGS1803121(E1) by FORDAFOURIE AMALERT

Dam: IJS1501269(E) by GLENSIDE VALHALLA FPG1400768(E)

	Growth	Adult Size	Repro.	Carcass	Index	Index Acc.
Terminal	£3.64	N/A	£-0.15	£0.13	£3.62	93%
Replacement	£4.83	£-1.13	£0.57	£0.17	£4.45	90%

Purchased for 9,000gns. Bred sons to 34,000gns Claybury Dunkirk and daughters to 8,000gns

Born: 24/02/2023



Born: 13/02/2022



Born: 11/02/2023



Born: 08/02/2022

Born: 22/02/2019

Claybury Production Sale - Shearling Ewes

MESSRS CLAYBURY TEXELS

CLAYBURY

DHL

109 CLAYBURY

DHL2202003(E1)

Born: 21/02/2022

Inbreeding coefficient: 0.4

Sire: MELLOR VALE DAKOTA BCM2000850(E1) by GARNGOUR CRAFTSMAN

Dam: DHL2001648(E2) by SCHOLARS YAHOO YWM1600531(E)

	Growth	Adult Size	Repro.	Carcass	Index	Index Acc.
Terminal	£4.31	N/A	£0.01	£-0.53	£3.80	71%
Replacement	£5.72	£-1.20	£0.02	£-0.70	£3.85	67%

Service Sire:ETRICK FU FIGHTER by NEW VIEW ELECTRIFYING TWF2101086(E1)

Service Details: AI 30/9/2023

One of the best gimmers offered for sale. G.dam bred 30,000gns Claybury Basic Instinct. Full sister to 111

Scanning Results: Twins



110 CLAYBURY

DHL2202100(1)

Inbreeding coefficient: 1.9

Sire: MELLOR VALE DAKOTA BCM2000850(E1) by GARNGOUR CRAFTSMAN

Dam: XMM1917493(1) by HILLTOP BRIGADIER PKH1801845(E2)

	Growth	Adult Size	Repro.	Carcass	Index	Index Acc.
Terminal	£4.88	N/A	£0.00	£-0.48	£4.39	71%
Replacement	£6.47	£-1.62	£0.31	£-0.64	£4.53	67%

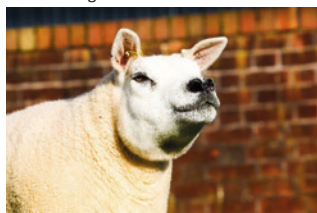
Service Sire:CLAYBURY GLADIATOR by RHAEADR FOUR SQUARE ENM2202620(E1)

Service Details: AI 30/9/2023

Dam purchased from Allanfauld for 10,000gns. Very bright and with real breed character.

Scanning Results: Twins

Born: 14/03/2022



DAM OF LOT 110

111 CLAYBURY**1DHL2202028(E1)****Born: 23/02/2022****Inbreeding coefficient: 0.4**

Sire: MELLOR VALE DAKOTA BCM2000850(E1) by GARNGOUR CRAFTSMAN

Dam: DHL2001648(E2) by SCHOLARS YAHOO YWM1600531(E)

	Growth	Adult Size	Repro.	Carcass	Index	Index Acc.
Terminal	£4.52	N/A	£0.01	£-1.18	£3.35	71%
Replacement	£6.00	£-1.27	£0.02	£-1.56	£3.18	67%

Service Sire:CLAYBURY GLADIATOR by RHAADR FOUR SQUARE ENM2202620(E1)

Service Details: AI 30/9/2023

Super bright gimmer. Dam retained. G.dam bred 30,000gns Claybury Basic Instinct. Full sister to 109

Scanning Results: Single

**112 CLAYBURY****DHL2202022(1)****Born: 22/02/2022****Inbreeding coefficient: 0.4**

Sire: MELLOR VALE DAKOTA BCM2000850(E1) by GARNGOUR CRAFTSMAN

Dam: DHL2001634(E2) by STRATHBOGIE CANNONBALL US1903555(E2)

	Growth	Adult Size	Repro.	Carcass	Index	Index Acc.
Terminal	£4.57	N/A	£-0.04	£-0.67	£3.86	70%
Replacement	£6.06	£-1.41	£0.29	£-0.89	£4.05	66%

Service Sire:ETTRICK FU FIGHTER by NEW VIEW ELECTRIFYING TWF2101086(E1)

Service Details: Served 1/11/2023

Embryos have been collected from this animal.

Dam retained. Dam full sister to 34,000gns Claybury Dunkirk.

Scanning Results: Pending

**113 CLAYBURY****DHL2202035(E1)****Born: 23/02/2022****Inbreeding coefficient: 1.3**

Sire: RHAADR EXPLORER ENM2102446(E2) by SPORTSMANS A STAR

Dam: DHL1701208(E) by STANTON VANTAGE II WPS1400599(E)

	Growth	Adult Size	Repro.	Carcass	Index	Index Acc.
Terminal	£5.17	N/A	£0.00	£-1.67	£3.51	71%
Replacement	£6.86	£-1.63	£0.36	£-2.21	£3.38	67%

Service Sire:CLAYBURY GLADIATOR by RHAADR FOUR SQUARE ENM2202620(E1)

Service Details: AI 30/9/2023

Dam bred sons to 4000gns and 2500gns. Very good breeding family. Full sister to 115, 126 & 127

Scanning Results: Twins



114 CLAYBURY**DHL2202083(1)****Born: 25/02/2022****Inbreeding coefficient: 2.3**

Sire: RHAEDR EXPLORER ENM2102446(E2) by SPORTSMANS A STAR

Dam: DHL2001666(E2) by STRATHBOGIE CANNONBALL IJS1903555(E2)

	Growth	Adult Size	Repro.	Carcass	Index	Index Acc.	Ranking
Terminal	£6.99	N/A	£-0.05	£-1.41	£5.52	68%	TOP 25%
Replacement	£9.27	£-2.37	£0.30	£-1.88	£5.32	64%	

Service Sire: ETTRICK FU FIGHTER by NEW VIEW ELECTRIFYING TWF2101086(E1)

Service Details: AI 30/9/2023

Dam is full ET sister to 34,000gns Claybury Dunkirk

Scanning Results: Single

**115 CLAYBURY****DHL2202017(E1)****Born: 22/02/2022****Inbreeding coefficient: 1.3**

Sire: RHAEDR EXPLORER ENM2102446(E2) by SPORTSMANS A STAR

Dam: DHL1701208(E) by STANTON VANTAGE II WPS1400599(E)

	Growth	Adult Size	Repro.	Carcass	Index	Index Acc.
Terminal	£6.48	N/A	£0.00	£-1.57	£4.91	71%
Replacement	£8.60	£-2.09	£0.36	£-2.08	£4.79	67%

Service Sire: HADDO FABIO by HARESTONE ELDORADO BSA2102521(E1)

Service Details: AI 30/9/2023

Dam has bred sons to 4000gns and 2,500gns. Full sister to 113, 126 & 127

Scanning Results: Single

**116 CLAYBURY****DHL2202019(E1)****Born: 22/02/2022****Inbreeding coefficient: 0.9**

Sire: CLAYBURY DELTA FORCE DHL2001637(E2) by STRATHBOGIE CANNONBALL

Dam: DHL1701130(1) by COWAL YOUR MY BOY CKC1607584(2)

	Growth	Adult Size	Repro.	Carcass	Index	Index Acc.
Terminal	£2.36	N/A	£-0.04	£-0.09	£2.23	71%
Replacement	£3.13	£-0.48	£0.21	£-0.12	£2.75	66%

Service Sire: KNAF GRIZZLY BEAR by HADDO FALCON KWJ2202414(E1)

Service Details: Served 16/10/2023

Full sister bred Claybury Gunner 3,800gns 2nd Prize Open Ram Lamb Carlisle 2023

Scanning Results: Pending

**117 CLAYBURY****DHL2202077(E1)****Born: 25/02/2022****Inbreeding coefficient: 2.7**

Sire: STRATHBOGIE CANNONBALL IJS1903555(E2) by SPORTSMANS BENCHMARK

Dam: DHL1601082(2) by STANTON VANTAGE II WPS1400599(E)

	Growth	Adult Size	Repro.	Carcass	Index	Index Acc.	Ranking
Terminal	£7.09	N/A	£-0.06	£-0.19	£6.84	73%	TOP 5%
Replacement	£9.41	£-2.21	£0.23	£-0.25	£7.17	69%	TOP 5%

Service Sire: ETTRICK FU FIGHTER by NEW VIEW ELECTRIFYING TWF2101086(E1)

Service Details: AI 30/9/2023

Dam still fit and active. Full sister Female Champion Shrewsbury sale 2023 & sold for 1200gns. Full sister to 120

Scanning Results: Twins



118 CLAYBURY**DHL2202038(E1)****Born: 23/02/2022****Inbreeding coefficient: 6.2**

Sire: CLAYBURY DELTA FORCE DHL2001637(E2) by STRATHBOGIE CANNONBALL

Dam: DHL1601036(E) by STANTON VANTAGE II WPS1400599(E)

	Growth	Adult Size	Repro.	Carcass	Index	Index Acc.
Terminal	£5.45	N/A	£-0.01	£-1.27	£4.17	72%
Replacement	£7.23	£-1.73	£0.03	£-1.68	£3.84	68%

Service Sire: ETTRICK FU FIGHTER by NEW VIEW ELECTRIFYING TWF2101086(E1)

Service Details: Served 14/11/2023

Full ET sister retained. Dam was a massive ewe. Same family as 7,000gns Claybury Powerpacker. Full sister to 119

Scanning Results: Pending

119 CLAYBURY**DHL2202033(E1)****Born: 23/02/2022****Inbreeding coefficient: 6.2**

Sire: CLAYBURY DELTA FORCE DHL2001637(E2) by STRATHBOGIE CANNONBALL

Dam: DHL1601036(E) by STANTON VANTAGE II WPS1400599(E)

	Growth	Adult Size	Repro.	Carcass	Index	Index Acc.
Terminal	£5.45	N/A	£-0.01	£-0.91	£4.53	72%
Replacement	£7.23	£-1.73	£0.03	£-1.21	£4.31	68%

Service Sire: HADDO FABIO by HARESTONE ELDORADO BSA2102521(E1)

Service Details: AI 30/9/2023

Full ET sister retained. Dam was a massive ewe. Same family as 7,000gns Claybury Powerpacker. Full sister to 118

Scanning Results: Twins

**120 CLAYBURY****DHL2202064(E1)****Born: 24/02/2022****Inbreeding coefficient: 2.7**

Sire: STRATHBOGIE CANNONBALL IJS1903555(E2) by SPORTSMANS BENCHMARK

Dam: DHL1601082(2) by STANTON VANTAGE II WPS1400599(E)

	Growth	Adult Size	Repro.	Carcass	Index	Index Acc.	Ranking
Terminal	£6.17	N/A	£-0.06	£-0.11	£6.00	73%	TOP 25%
Replacement	£8.18	£-1.88	£0.23	£-0.15	£6.38	69%	TOP 25%

Service Sire: COWAL FIREPOWER by COWAL EXCALIBUR CKC2113582(E1)

Service Details: AI 30/9/2023

Dam still first and active. Full sister retained. Won Female Champion Oswestry show 2023. Full sister to 117

Scanning Results: Triplets

**121 CLAYBURY****DHL2202084(E1)****Born: 25/02/2022****Inbreeding coefficient: 6.9**

Sire: CLINTERTY YOGI BEAR BBY1601064(E) by TOPHILL WALL ST

Dam: IJS1400787(E) by STRATHBOGIE UNTOUCHABLE IJS1300280(E)

	Growth	Adult Size	Repro.	Carcass	Index	Index Acc.
Terminal	£4.34	N/A	£0.02	£-1.05	£3.31	71%
Replacement	£5.76	£-1.53	£0.41	£-1.39	£3.24	68%

Service Sire: CLAYBURY GLADIATOR by RHAEDR FOUR SQUARE ENM2202620(E1)

Service Details: AI 30/9/2023

Glanllyn Embryo by Clinterty Yogi Bear. Full sister to 124

Scanning Results: Single



122 CLAYBURY**DHL2202075(E1)****Inbreeding coefficient: 0.3**

Sire: MELLOR VALE DAKOTA BCM2000850(E1) by GARNGOUR CRAFTSMAN

Dam: DHL1701148(E) by STANTON VANTAGE II WPS1400599(E)

	Growth	Adult Size	Repro.	Carcass	Index	Index Acc.
Terminal	£4.38	N/A	£0.02	£-0.36	£4.04	71%
Replacement	£5.81	£-1.38	£-0.05	£-0.47	£3.90	67%

Service Sire: CLAYBURY GLADIATOR by RHAADR FOUR SQUARE ENM2202620(E1)

Service Details: AI 30/9/2023

Breedy gimmer. Breedy Gimmer - Same family as 7,000gns Claybury Powerpacker

Scanning Results: Single

Born: 25/02/2022**123 CLAYBURY****DHL2202091(2)****Inbreeding coefficient: 5.6**

Sire: CLAYBURY DELTA FORCE DHL2001637(E2) by STRATHBOGIE CANNONBALL

Dam: DHL1701165(1) by STANTON VANTAGE II WPS1400599(E)

	Growth	Adult Size	Repro.	Carcass	Index	Index Acc.
Terminal	£2.94	N/A	£-0.01	£-0.84	£2.09	71%
Replacement	£3.91	£-0.92	£0.37	£-1.12	£2.24	67%

Service Sire: ETTRICK FU FIGHTER by NEW VIEW ELECTRIFYING TWF2101086(E1)

Service Details: AI 30/9/2023

Bright Delta Force. Same family as 27,000gns Claybury Invader

Scanning Results: Triplets

Born: 27/02/2022**124 CLAYBURY****DHL2202062(E1)****Inbreeding coefficient: 6.9**

Sire: CLINTERTY YOGI BEAR BBY1601064(E) by TOPHILL WALL ST

Dam: IJS1400787(E) by STRATHBOGIE UNTOUCHABLE IJS1300280(E)

	Growth	Adult Size	Repro.	Carcass	Index	Index Acc.
Terminal	£1.97	N/A	£0.02	£-0.96	£1.03	71%
Replacement	£2.62	£-0.70	£0.41	£-1.27	£1.06	68%

Service Sire: CLAYBURY GLADIATOR by RHAADR FOUR SQUARE ENM2202620(E1)

Service Details: AI 30/9/2023

Glanllyn Embryo by Clinterty Yogi Bear. Full sister to 121

Scanning Results: Twins

Born: 24/02/2022**125 CLAYBURY****DHL2202032(1)****Inbreeding coefficient: 2.5**

Sire: RHAADR EXPLORER ENM2102446(E2) by SPORTSMANS A STAR

Dam: DHL2001600(E1) by STRATHBOGIE CANNONBALL IJS1903555(E2)

	Growth	Adult Size	Repro.	Carcass	Index	Index Acc.
Terminal	£5.22	N/A	£-0.05	£-1.38	£3.78	56%
Replacement	£6.92	£-1.79	£0.39	£-1.84	£3.69	53%

Service Sire: ETTRICK FU FIGHTER by NEW VIEW ELECTRIFYING TWF2101086(E1)

Service Details: Served 16/10/2023

Dams full sister was sold for 8,000gns. Real character gimmer.

Scanning Results: Pending

Born: 23/02/2022**126 CLAYBURY****DHL2202020(E1)****Inbreeding coefficient: 1.3**

Sire: RHAADR EXPLORER ENM2102446(E2) by SPORTSMANS A STAR

Dam: DHL1701208(E) by STANTON VANTAGE II WPS1400599(E)

	Growth	Adult Size	Repro.	Carcass	Index	Index Acc.
Terminal	£4.80	N/A	£0.00	£-1.61	£3.19	71%
Replacement	£6.37	£-1.50	£0.36	£-2.14	£3.09	67%

Service Sire: CLAYBURY GLADIATOR by RHAADR FOUR SQUARE ENM2202620(E1)

Service Details: Served 10/11/2023

Dam bred sons to 4000gns and 2500gns. Very good breeding family. Full sister to 113, 115 & 127

Scanning Results: Pending

Born: 22/02/2022

127 CLAYBURY**DHL2202089(E1)****Born: 26/02/2022****Inbreeding coefficient: 6.2**

Sire: CLAYBURY DELTA FORCE DHL2001637(E2) by STRATHBOGIE CANNONBALL

Dam: DHL1701208(E) by STANTON VANTAGE II WPS1400599(E)

	Growth	Adult Size	Repro.	Carcass	Index	Index Acc.
Terminal	£4.85	N/A	£-0.01	£-0.89	£3.95	72%
Replacement	£6.43	£-1.39	£0.38	£-1.18	£4.23	68%

Service Sire: ETTRICK FU FIGHTER by NEW VIEW ELECTRIFYING TWF2101086(E1)

Service Details: AI 30/9/2023

Dam bred sons to 4000gns and 2500gns. Very good breeding family. Full sister to 113, 115 & 126

Scanning Results: Single

128 CLAYBURY**DHL2202107(1)****Born: 15/03/2022****Inbreeding coefficient: 0.5**

Sire: RHAEADR EXPLORER ENM2102446(E2) by SPORTSMANS A STAR

Dam: DHL1901514(E1) by WILODGE BRAVO TIP1801861(E1)

	Growth	Adult Size	Repro.	Carcass	Index	Index Acc.
Terminal	£4.47	N/A	£-0.01	£-1.20	£3.25	68%
Replacement	£5.93	£-1.37	£0.22	£-1.59	£3.19	64%

Service Sire: STRATHBOGIE CANNONBALL by SPORTSMANS BENCHMARK BGS1803121(E1)

Service Details: AI 30/9/2023

Dam biggest Bravo ewe and has been retained and flushed.

Scanning Results: Single

Service Sires**HADDO FABIO****KWJ2202475(1)****Born: 10/02/2022****Inbreeding coefficient: 2.1**

Sire: HARESTONE ELDORADO BSA2102521(E1) by MELLOR VALE DEJA VU

Dam: KWJ2002003(E2) by CLINTERTY YUGA KHAN BBY1601056(E)

Sired sons to 6500gns, 4500gns and 3500gns

KNAP GRIZZLY BEAR**CKP2307491(1)****Born: 11/02/2023****Inbreeding coefficient: 0.2**

Sire: HADDO FALCON KWJ2202414(E1) by HARESTONE ELDORADO

Dam: RFY2100239(E2) by MILLARS DRIVE VMG2002289(E1)

Overall Champion Ruthin 2023. Purchased for 3,800gns.

We eagerly await his first crop of lambs.

**CLAYBURY GLADIATOR****DHL2302229(1)****Born: 24/02/2023****Inbreeding coefficient: 0.5**

Sire: RHAEADR FOUR SQUARE ENM2202620(E1) by SPORTSMANS DARE DEVIL

Dam: DHL2101925(E1) by STRATHBOGIE CANNONBALL JS1903555(E2)

	Growth	Adult Size	Repro.	Carcass	Index	Index Acc.	Ranking
Terminal	£7.21	N/A	£-0.03	£-0.40	£6.78	68%	TOP 5%
Replacement	£9.57	£-2.43	£0.37	£-0.53	£6.98	62%	TOP 10%

No.1 Lamb this year. Retained for size, carcass and character. Dam a tremendous ewe.

GGDam and Dam retained.



ETTRICK FU FIGHTER**GGH2214239(E2)****Born: 13/02/2022****Inbreeding coefficient: 1.8**

Sire: NEW VIEW ELECTRIFYING TWF2101086(E1) by SPORTSMANS DOUBLE DIAMOND

Dam: GGH1909050(E2) by MIDCOMBE BRIGADIER MOE1800266(E1)

	Growth	Adult Size	Repro.	Carcass	Index	Index Acc.
Terminal	£5.65	N/A	£-0.09	£-1.23	£4.34	62%
Replacement	£7.50	£-1.77	£0.42	£-1.63	£4.53	60%

Purchased Kelso 2023. 2nd Prize Lesmahagow Show.

Maternal brother to 5,500gns Eagerbeaver

**STRATHBOGIE CANNONBALL****IJS1903555(E2)****Born: 22/02/2019****Inbreeding coefficient: 2.5**

Sire: SPORTSMANS BENCHMARK BGS1803121(E1) by FORDAFOURIE AMALERT

Dam: IJS1501269(E) by GLENSIDE VALHALLA FPG1400768(E)

	Growth	Adult Size	Repro.	Carcass	Index	Index Acc.
Terminal	£3.64	N/A	£-0.15	£0.13	£3.62	93%
Replacement	£4.83	£-1.13	£0.57	£0.17	£4.45	90%

Purchased for 9,000gns. Bred sons to 34,000gns Claybury Dunkirk and daughters to 8,000gns

COWAL FIREPOWER**CKC2214669(E1)****Born: 08/02/2022****Inbreeding coefficient: 0.7**

Sire: COWAL EXCALIBUR CKC2113582(E1) by HEXEL DJANGO

Dam: CKC2012361(E1) by TEIGLUM CHARMER CFT1906371(E2)

	Growth	Adult Size	Repro.	Carcass	Index	Index Acc.	Ranking
Terminal	£7.56	N/A	£0.02	£-0.14	£7.44	78%	TOP 5%
Replacement	£10.04	£-2.65	£0.92	£-0.19	£8.12	72%	TOP 5%

Purchased Lanark 2022 for 6,800gns

Aldan Flock Dispersal - Aged Ewes

DANIEL JONES

ALDAN

JDY

129 ALDAN

JDY1900859(E1)

Born: 23/02/2019

Inbreeding coefficient: 1.6

Sire: SPORTSMANS BOOM BGS1803204(E1) by GARGOUR ALABAMA

Dam: JDY1400202(E) by SPORTSMANS TROJAN II BGS1200587(E)

Service Sire:CLANFIELD GLADIATOR by RHAEADR FIRST CHOICE ENM2202599(E1)

Service Details: AI'd 9/10/23

130 CLINTERTY

BBY1902201(1)

Born: 19/02/2019

Inbreeding coefficient: 0.0

Sire: TEIGLUM BANDANA ARR/ARR CFT1805744(E2) by ETTRICK YOM KIPPUR

Dam: BBY1400685(E) by DEVERONVALE UNION JACK MGV1300477(1)

Service Sire:CLANFIELD GLADIATOR by RHAEADR FIRST CHOICE ENM2202599(E1)

Service Details: AI'd 9/10/23

Embryos have been collected from this animal.



131 ALDAN

JDY2101160(E1)

Born: 02/03/2021

Inbreeding coefficient: 3.0

Sire: SPORTSMANS BOOM BGS1803204(E1) by GARGOUR ALABAMA

Dam: JDY1700644(E) by CASTLECAIRN VAVAVOOM RNA1400593(3)

Service Sire:CLANFIELD GLADIATOR by RHAEADR FIRST CHOICE ENM2202599(E1)

Service Details: AI'd 9/10/23



132 ALDAN

JDY2101136(E1)

Born: 26/02/2021

Inbreeding coefficient: 1.3

Sire: MIDLOCK DYNAMO WKM2030262(E2) by SPORTSMANS CANNON BALL

Dam: TEG1800845(1) by CORNMORE ACE LTE1701090(1)

Service Sire:CLANFIELD GLADIATOR by RHAEADR FIRST CHOICE ENM2202599(E1)

Service Details: AI'd 9/10/23

133 ALDAN

JDY2101148(E1)

Born: 28/02/2021

Inbreeding coefficient: 1.3

Sire: MIDLOCK DYNAMO WKM2030262(E2) by SPORTSMANS CANNON BALL

Dam: TEG1800845(1) by CORNMORE ACE LTE1701090(1)

Service Sire:CLANFIELD GLADIATOR by RHAEADR FIRST CHOICE ENM2202599(E1)

Service Details: AI'd 9/10/23

134 ALDAN

JDY2101133(E1)

Born: 26/02/2021

Inbreeding coefficient: 9.8

Sire: EDEN VALLEY WIZ KID WEV1500437(2) by SPORTSMANS TREMENDOUS II

Dam: WEV1901344(E2) by AULHOUSEBURN BOLT BYZ1820691(E2)

Service Sire:CLANFIELD GLADIATOR by RHAEADR FIRST CHOICE ENM2202599(E1)

Service Details: AI'd 9/10/23

Dam of lot 134



Service Sires

CLANFIELD GLADIATOR

THE2301395(E1)

Born: 06/02/2023

Inbreeding coefficient: 4.4

Sire: RHAEADR FIRST CHOICE ENM2202599(E1) by SPORTSMANS DARE DEVIL

Dam: THE2200946(E1) by AULHOUSEBURN EXPRESSION BYZ2129120(E1)

I would like to thank the Owen Family of Red House for kindly allowing us to use Clanfield Gladiator.

I am very grateful to them.

Aldan Flock Dispersal - Shearling Ewes

DANIEL JONES	ALDAN	JDY
135 ALDAN	JDY2201334(1)	Born: 03/03/2022
Inbreeding coefficient: 0.0		
Sire: ETTRICK EVOLUTION GGH2111151(E1) by CLAYBURY DUNKIRK		
Dam: JDY1700652(E) by CASTLECAIRN VAVAVOOM RNA1400593(3)		
Service Sire:CLANFIELD GLADIATOR by RHAEADR FIRST CHOICE ENM2202599(E1)		
Service Details: AI'd 9/10/23		
136 PLASUCHA	BFE2212172(E1)	Born: 10/02/2022
Inbreeding coefficient: 0.5		
Sire: HOPE VALLEY DRAGO ERH2000460(E1) by GARNGOUR ALABAMA		
Dam: BFE2010075(E1) by MILLHOUSE CYCLONE HNL1902244(E1)		
Service Sire:CLANFIELD GLADIATOR by RHAEADR FIRST CHOICE ENM2202599(E1)		
Service Details: AI'd 9/10/23		
137 ALDAN	JDY2201336(E1)	Born: 13/03/2022
Inbreeding coefficient: 1.8		
Sire: NEW VIEW ELECTRIFYING TWF2101086(E1) by SPORTSMANS DOUBLE DIAMOND		
Dam: JDY1700644(E) by CASTLECAIRN VAVAVOOM RNA1400593(3)		
Service Sire:CLANFIELD GLADIATOR by RHAEADR FIRST CHOICE ENM2202599(E1)		
Service Details: AI'd 9/10/23		
138 ALDAN	JDY2201341(E1)	Born: 15/03/2022
Inbreeding coefficient: 1.8		
Sire: NEW VIEW ELECTRIFYING TWF2101086(E1) by SPORTSMANS DOUBLE DIAMOND		
Dam: JDY1700644(E) by CASTLECAIRN VAVAVOOM RNA1400593(3)		
Service Sire:CLANFIELD GLADIATOR by RHAEADR FIRST CHOICE ENM2202599(E1)		
Service Details: AI'd 9/10/23		
Service Sires		
CLANFIELD GLADIATOR	THE2301395(E1)	Born: 06/02/2023
Inbreeding coefficient: 4.4		
Sire: RHAEADR FIRST CHOICE ENM2202599(E1) by SPORTSMANS DARE DEVIL		
Dam: THE2200946(E1) by AULHOUSEBURN EXPRESSION BYZ2129120(E1)		
I would like to thank the Owen Family of Red House for kindly allowing us to use Clanfield Gladiator.		
I am very grateful to them.		

Aldan Flock Dispersal - Donor Ewes

DANIEL JONES

ALDAN

JDY

139 ALDAN

JDY1700644(E)

Born: 17/02/2017

Inbreeding coefficient: 0.7

Sire: CASTLECAIRN VAVAVOOM RNA1400593(3) by CASTLECAIRN U2
 Dam: JDY1400202(E) by SPORTSMANS TROJAN II BGS1200587(E)
 Service Sire:CLANFIELD GLADIATOR by RHAADR FIRST CHOICE ENM2202599(E1)
 Service Details:Ran with ram until 29/11/2023
Embryos have been collected from this animal.

ALDAN RECIPIENT EWE UK0701079 00559

SINGLE PREGNANCY

Implanted: 14/10/2023

Sire: CLANFIELD GLADIATOR THE2301395(E1) by RHAADR FIRST CHOICE
 Dam: JDY1400202(E) by SPORTSMANS TROJAN II BGS1200587(E)

Lot 139 sells with a single embryo pregnancy. The ewe suffered an accident as a gimmer while dipping and managed to cut her leg resulting in a lump on the back leg and also cutting her udder resulting in us losing her udder, but this hasn't affected her one bit!

140 ALDAN RECIPIENT EWE UK0700110 09648

SINGLE PREGNANCY

Implanted: 14/10/2023

Sire: CLANFIELD GLADIATOR THE2301395(E1) by RHAADR FIRST CHOICE
 Dam: JDY1700644(E) by CASTLECAIRN VAVAVOOM RNA1400593(3)

141 ALDAN RECIPIENT EWE UK0701079 00557

SINGLE PREGNANCY

Implanted: 14/10/2023

Sire: CLANFIELD GLADIATOR THE2301395(E1) by RHAADR FIRST CHOICE
 Dam: JDY1700644(E) by CASTLECAIRN VAVAVOOM RNA1400593(3)

142 ALDAN

JDY2101132(E1)

Born: 28/02/2021

Inbreeding coefficient: 3.0

Sire: SPORTSMANS BOOM BGS1803204(E1) by GARNGOUR ALABAMA
 Dam: JDY1700644(E) by CASTLECAIRN VAVAVOOM RNA1400593(3)
 Service Sire:CLANFIELD GLADIATOR by RHAADR FIRST CHOICE ENM2202599(E1)
 Service Details:Ran with ram until 29/11/2023
Embryos have been collected from this animal.



ALDAN RECIPIENT EWE UK0701079 00560

SINGLE PREGNANCY

Implanted: 14/10/2023

Sire: CLANFIELD GLADIATOR THE2301395(E1) by RHAADR FIRST CHOICE
 Dam: JDY2101132(E1) by SPORTSMANS BOOM BGS1803204(E1)

Unfortunately, this ewe got stuck on her back in the spring while rearing her lamb and had the inside of her back leg and one side of her udder attacked by wildlife. We think one side of her udder may be ok but can't guarantee it! She recovered well and flushed 26 embryos this summer! She would be an asset to any flock I am sure!

143 ALDAN RECIPIENT EWE UK0701079 00544

SINGLE PREGNANCY

Implanted: 14/10/2023

Sire: CLANFIELD GLADIATOR THE2301395(E1) by RHAADR FIRST CHOICE
 Dam: JDY2101132(E1) by SPORTSMANS BOOM BGS1803204(E1)

144 ALDAN RECIPIENT EWE UK0701079 01175

SINGLE PREGNANCY

Implanted: 14/10/2023

Sire: CLANFIELD GLADIATOR THE2301395(E1) by RHAADR FIRST CHOICE
 Dam: JDY2101132(E1) by SPORTSMANS BOOM BGS1803204(E1)

145 ALDAN RECIPIENT EWE UK0701079 00548

SINGLE PREGNANCY

Implanted: 14/10/2023

Sire: CLANFIELD GLADIATOR THE2301395(E1) by RHAADR FIRST CHOICE
 Dam: JDY2101132(E1) by SPORTSMANS BOOM BGS1803204(E1)

146 ALDAN RECIPIENT EWE UK0701079 01177

SINGLE PREGNANCY

Implanted: 14/10/2023

Sire: CLANFIELD GLADIATOR THE2301395(E1) by RHAADR FIRST CHOICE
 Dam: JDY2101132(E1) by SPORTSMANS BOOM BGS1803204(E1)

147 ALDAN RECIPIENT EWE UK0701079 00562

SINGLE PREGNANCY

Implanted: 14/10/2023

Sire: CLANFIELD GLADIATOR THE2301395(E1) by RHAADR FIRST CHOICE
 Dam: JDY2101132(E1) by SPORTSMANS BOOM BGS1803204(E1)

148 ALDAN RECIPIENT EWE UK0743939 01691

SINGLE PREGNANCY

Implanted: 14/10/2023

Sire: CLANFIELD GLADIATOR THE2301395(E1) by RHAADR FIRST CHOICE
 Dam: JDY2101132(E1) by SPORTSMANS BOOM BGS1803204(E1)

- 149 ALDAN RECIPIENT EWE UK0701079 00578 TWIN PREGNANCY** **Implanted: 14/10/2023**
 Sire: CLANFIELD GLADIATOR THE2301395(E1) by RHAEADR FIRST CHOICE
 Dam: JDY2101132(E1) by SPORTSMANS BOOM BGS1803204(E1)
- 150 ALDAN RECIPIENT EWE UK0701079 00685 TWIN PREGNANCY** **Implanted: 14/10/2023**
 Sire: CLANFIELD GLADIATOR THE2301395(E1) by RHAEADR FIRST CHOICE
 Dam: JDY2101132(E1) by SPORTSMANS BOOM BGS1803204(E1)
- 151 ALDAN RECIPIENT EWE UK0701079 00894 TWIN PREGNANCY** **Implanted: 14/10/2023**
 Sire: CLANFIELD GLADIATOR THE2301395(E1) by RHAEADR FIRST CHOICE
 Dam: JDY2101132(E1) by SPORTSMANS BOOM BGS1803204(E1)
- 152 ALDAN RECIPIENT EWE UK0701079 00554 TWIN PREGNANCY** **Implanted: 14/10/2023**
 Sire: CLANFIELD GLADIATOR THE2301395(E1) by RHAEADR FIRST CHOICE
 Dam: JDY2101132(E1) by SPORTSMANS BOOM BGS1803204(E1)
- 153 ALDAN RECIPIENT EWE UK0701079 00907 TWIN PREGNANCY** **Implanted: 14/10/2023**
 Sire: CLANFIELD GLADIATOR THE2301395(E1) by RHAEADR FIRST CHOICE
 Dam: JDY2101132(E1) by SPORTSMANS BOOM BGS1803204(E1)
- 154 ALDAN RECIPIENT EWE UK0701079 01179 TWIN PREGNANCY** **Implanted: 14/10/2023**
 Sire: CLANFIELD GLADIATOR THE2301395(E1) by RHAEADR FIRST CHOICE
 Dam: JDY2101132(E1) by SPORTSMANS BOOM BGS1803204(E1)

- 155 ALDAN JDY2101163(E1)** **Born: 02/03/2021**
Inbreeding coefficient: 1.3
 Sire: MIDLOCK DYNAMO WKM2030262(E2) by SPORTSMANS CANNON BALL
 Dam: TEG1800845(1) by CORNMORE ACE LTE1701090(1)
 Service Sire: CLANFIELD GLADIATOR by RHAEADR FIRST CHOICE ENM2202599(E1)
 Service Details: Ran with ram until 29/11/2023
Embryos have been collected from this animal.



- ALDAN RECIPIENT EWE UK0701079 00559 SINGLE PREGNANCY** **Implanted: 14/10/2023**
 Sire: CLANFIELD GLADIATOR THE2301395(E1) by RHAEADR FIRST CHOICE
 Dam: JDY2101163(E1) by MIDLOCK DYNAMO WKM2030262(E2)
 A tremendous ewe full of quality and certain to go on and do well in any flock!
- 156 ALDAN RECIPIENT EWE UK0701079 00569 SINGLE PREGNANCY** **Implanted: 14/10/2023**
 Sire: CLANFIELD GLADIATOR THE2301395(E1) by RHAEADR FIRST CHOICE
 Dam: JDY2101163(E1) by MIDLOCK DYNAMO WKM2030262(E2)
- 157 ALDAN RECIPIENT EWE UK0701079 00539 SINGLE PREGNANCY** **Implanted: 14/10/2023**
 Sire: CLANFIELD GLADIATOR THE2301395(E1) by RHAEADR FIRST CHOICE
 Dam: JDY2101163(E1) by MIDLOCK DYNAMO WKM2030262(E2)
- 158 ALDAN RECIPIENT EWE UK0701079 00469 SINGLE PREGNANCY** **Implanted: 14/10/2023**
 Sire: CLANFIELD GLADIATOR THE2301395(E1) by RHAEADR FIRST CHOICE
 Dam: JDY2101163(E1) by MIDLOCK DYNAMO WKM2030262(E2)
- 159 ALDAN RECIPIENT EWE UK0701079 00556 SINGLE PREGNANCY** **Implanted: 14/10/2023**
 Sire: CLANFIELD GLADIATOR THE2301395(E1) by RHAEADR FIRST CHOICE
 Dam: JDY2101163(E1) by MIDLOCK DYNAMO WKM2030262(E2)
- 160 ALDAN RECIPIENT EWE UK0701079 00821 TWIN PREGNANCY** **Implanted: 14/10/2023**
 Sire: CLANFIELD GLADIATOR THE2301395(E1) by RHAEADR FIRST CHOICE
 Dam: JDY2101163(E1) by MIDLOCK DYNAMO WKM2030262(E2)

Service Sires

CLANFIELD GLADIATOR THE2301395(E1) **Born: 06/02/2023**
Inbreeding coefficient: 4.4

Sire: RHAEADR FIRST CHOICE ENM2202599(E1) by SPORTSMANS DARE DEVIL
 Dam: THE2200946(E1) by AULHOUSEBURN EXPRESSION BYZ2129120(E1)
 I would like to thank the Owen Family of Red House for kindly allowing us to use Clanfield Gladiator.
 I am very grateful to them.

BRECON CARREG



FROM THE ♥ OF THE WELSH MOUNTAINS

Agrii Forage & Livestock

Agrii intelligence

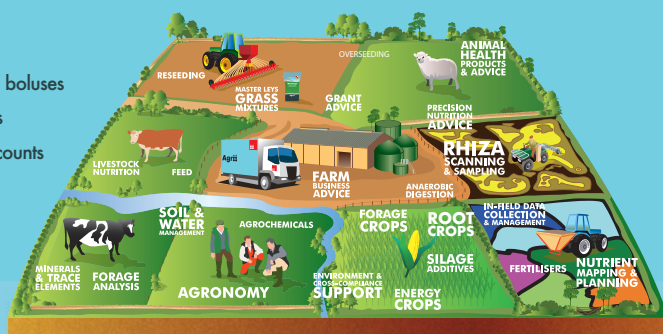


The Agrii Forage and Livestock Team is made up of highly qualified and dedicated advisory staff located throughout the UK. Agrii provides a professional, advice-based service in addition to supplying the following products direct to your farm for your livestock enterprise:

Products

- + Livestock vaccines
- + Parasite control products
- + Trace element drenches and boluses
- + Lick buckets and feed blocks
- + Worming plans and faecal counts
- + Compound feeds
- + Milk powders
- + Forage inoculants
- + Bale wrap and silage sheet
- + **Plus more!!**

Services



Please get in touch for more information

You can email us at info@agrii.co.uk or call:



Emma Gatehouse
Product Manager Livestock

☎ +447966664096



Sophie Dillon
Crop Input Specialist

☎ +447826956226



www.agrii.co.uk



AgriiTM

FARMGENE

artificial breeding services



Services for the Pedigree Texel Breeder

- Embryo Transfer
- ET Flush and Freeze
- Artificial Insemination
- Semen Freezing
- Ram Fertility Testing
- Export Accredited AI/ET Centre

For more information contact:

✉ enquiries@farmgene.com

f [FGSheepGoat](#)

☎ +44 7813 010386

www.farmgene.com

Ensdon House, Montford Bridge, Shrewsbury, Shropshire, SY4 1EJ