

2022

texel.uk
#addtexeladdvalue

SALE CATALOGUE



The Welsh National Show & Sale of Texel Sheep



At
**Welshpool
Livestock
Market**

Saturday 27th
August

Highest Seller – Mr C Boden - BCM2100975 - MellorVale Etambo sold for 8000gns

Saturday 27th August

07.00 - 09.00	Arrival of sheep and Inspection
09.30	Judging of Pre-Sale show by Rosie Boden – Sportsmans & MellorVale flocks
11.30	Sale of Shearling Ewes followed by Shearling Rams & Ram Lambs

Official Auctioneers - Welshpool Livestock Sales, Telephone: 01938 553 438

Supported by

Kiwikit ROXAN



Welshpool Livestock Market

Buttington Cross
Welshpool
SY21 8SR

CPH Number - 52/160/8014



Supreme Champion – R E J Pierce - PRE2101433 – Oldford Edwardian Conquerer

Welshpool Livestock Sales

On making your first purchase please complete this form
and hand it to the Auctioneers

COMPUTER ACCOUNTING

Intending Purchasers are requested to check with our office prior to the Sale that we have opened an account in their name. This will save time when you have completed your purchases.

Lot No.

Name

Address

.....

.....

Post Code

Telephone No.

Flock Prefix

Flock Code

UK Flock No.

We request that payment is made to us in **pounds sterling** or by
cheque/bankers draft, debit card or credit card.
Credit card payment incurs a 3% surcharge.

*Foreign currency is **not** accepted (inc Euros)*

The Texel breed's quick growth, excellent conformation and ability to adapt to a wide variety of farming systems and environments have made it the number one sire breed in the country and also a top choice maternal breed too.

Sheep farmers across the UK have long recognised this and the continued dominance of Texels in the UK sheep sector is testament to the higher demand and better returns enjoyed by Texel sired stock of all types.

Reducing risk is key to any business and none more so than sheep farming, particularly at a time of rising input costs.

Fertiliser, fuel and feed prices have all escalated in the last 12 months due to a number of factors and inflationary pressures across all inputs have focussed minds on simplified systems with reduced risk exposure.

Without a doubt the best way to reduce risk is to maximise your market. In simple terms the greater the demand for your product the lower the risk and higher the chances of achieving good sales values.

Whether you are selling prime lambs, breeding ewes or store lambs, Texel crosses continually earn premium prices week in, week out. No other breed can match the sales performance of Texel-sired stock when sold either liveweight or deadweight.

Since the breed's arrival in the UK more than 45 years ago Texel breeders have dedicated themselves to ensuring the breed suits the needs of sheep farmers, processors and retailers.

The Society's **texelplus** genetic improvement service underpins the improvements being made by breeders as they seek to develop sheep best suited to the modern sheep industry. Search out the performance figures in this catalogue.

It is the great strides made in key traits, such as meat yield and growth rate which have helped make Texels the success they are today as both a terminal and maternal breed.

The Society is grateful to the sale's sponsors for their support of the breed and Society members.

If you are not a member of the Society, but would like to start your own pedigree flock, please contact the Society office 02476 696629 or visit the Society website texel.uk for further information to apply to be a member.

Breeders wanting to make use of the Society's genetic improvement services **texelplus**, should also contact the Society office in the first instance.

John Yates
Chief Executive

texel.uk • 024 7669 6629 • office@texel.co.uk

To join the Texel Sheep Society, visit
texel.uk/join-us complete and submit the online form.



SCAN HERE

Show & Sale Programme

WELSH NATIONAL SALE - WELSHPOOL

Bye Law 11.6

No dressing, trimming, clipping or excessive use of dips on the fleeces of sheep will be permitted. No artificial whitening on any part of the sheep is permitted. An inspector may be present at the sale or show, they have the authority to disqualify any sheep, which in their opinion, are below a minimum standard with regard to breed type or are found to be contravening the Society Byelaws, right up to the point of sale. The decision of the inspector shall be final and failure to accept the inspector's decision will result in the entire consignment or show team being rejected.

Saturday 27th August

- 07.00 - 09.00 - Arrival of sheep and inspection prior to penning.
Any sheep not inspected by 09:00 will not be eligible to be shown and sold.
- 09.30 - Judging of all classes by Rosie Boden – Sportsmans & Mellor Vale flocks
Presentation of prizes will take place after all classes.
One entry per class, per vendor and sheep may only be shown in one class (Other than the group of three).
- Class 1:** Shearling Ewe
- Class 2:** Shearling Ram
- Class 3:** Novice Flock Ram Lamb
Only flocks founded after 1st January 2017 are eligible to exhibit as shown on page 8
- Class 4:** Open Ram Lamb
Flocks showing in class 3 (Novice flock) cannot show in this Open Ram Lamb class
- Class 5:** **texelplus** Ram Lamb
Restricted to Ram Lambs that have their Terminal Sire Index published in this catalogue and are within the top 25% (>197) of the breed benchmark
- Class 6:** Group of Three Ram Lambs bred by exhibitor
(Non-Championship)
- 11.30 - Sale of Shearling Ewes followed by Shearling Rams & Ram Lambs

Acknowledgements

The Texel Sheep Society acknowledges with thanks the Show Judges, Stewards, Auctioneers and Exhibitors, along with the generous support of our Sponsors.

KiwiKit **ROXAN**

Harbro
QUALITY LIVESTOCK NUTRITION

A stylized, dark grey wavy line graphic that tapers at both ends, positioned below the Harbro text.

**Register
your new
stock rams
now.**

DNA kits can be collected and
returned to Society staff on the
day of the sale.



Inbreeding within the national pedigree Texel flock

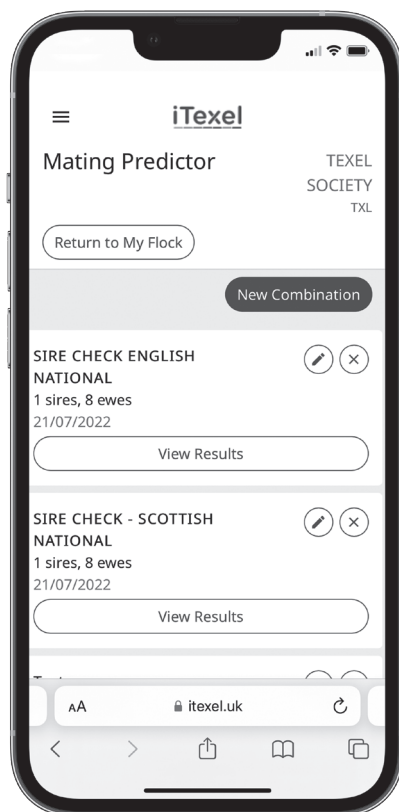
Use the Mating Predictor Tool now on iTexel

Members are encouraged to use the mating predictor on iTexel to manage levels of inbreeding within their flocks. You cannot assess ewe/ram combinations by eye. The Mating Predictor estimates the inbreeding value of the offspring from a particular pairing.

The predictor is available on your smart phone as well as desktop

To check the ram(s) you're interested in purchasing and see how they combine with your ewes:

1. Login to iTexel, click Mating Predictor
2. Choose 'New Combination' to select a Sire and Ewes
3. Click 'View Results'
4. A summary will appear with the number in brackets displaying the predicted inbreeding coefficient. A coefficient below 7 is desirable



Inbreeding can be defined as the mating of related individuals, or of individuals with shared ancestors. A balance needs to be maintained between selecting animals to optimise rates of genetic gain and minimise levels of inbreeding.

Increasing levels of inbreeding can result in inbreeding depression, where performance can suffer. It can be argued that any animal is only one mating away from being outbred.

Each animal's inbreeding coefficient value is now displayed in the sales catalogue. The lower the level of inbreeding the better; a value of 7% or below is regarded as an acceptable level of inbreeding within a breeding programme.

2022 SHOW RESULTS

Class	1st £25	2nd £20	3rd £15	4th £10	5th £5	6th £5
Shearling Ewe Class 1						
Shearling Ram Class 2						
Novice Flock Ram Lamb Class 3						
Open Ram Lamb Class 4						
texelplus Ram Lamb Class 5						
Group Of Three Class 6	1st - £25		2nd - £20		3rd - £15	
Supreme Champion - £45						
Reserve Overall Champion - £30						
Male Champion						
Male Reserve Champion						
Female Champion						
Female Reserve Champion						
Prize fund of £535						
Note: prize funds will be made by BACS directly to members bank accounts.						

Championship & Trophy Winners

2022 Supreme Champion "The South Wales Texel Breeders Club Champion Texel Trophy"	
2021 Winner	R E J Pierce <i>PRE2101433 – Oldford Edwardian Conquerer</i>
2022 Reserve Champion	
2021 Winner	Joseph Williams <i>WPH2003144 – Owl Valley</i>
2022 Male Champion "The North Wales Texel Breeders Club Male Champion Trophy"	
2021 Winner	R E J Pierce <i>PRE2101433 – Oldford Edwardian Conquerer</i>
2022 Male Reserve Champion	
2021 Winner	Boden & Davies Ltd <i>BGS2104950 – Sportsmans Ezra</i>
2022 Female Champion "The Rascarrel Best Shearling Ewe Perpetual Trophy"	
2021 Winner	Joseph Williams <i>WPH2003144 – Owl Valley</i>
2022 Female Reserve Champion	
2021 Winner	Robert Cockburn <i>CKP2004685 – Knap</i>
2022 Novice Flock Ram Lamb "C,T & F Perpetual Trophy"	
2021 Winner	Vaughan Farms Ltd <i>VFK2102003 – Kingspark Eley</i>
2022 - Best Group of Three Ram Lambs bred by Exhibitor	
2021 Winner	Boden & Davies Ltd – Sportsmans

NOVICE FLOCK RAM LAMB - ELIGIBLE FLOCKS FORMED AFTER 1st JANUARY 2017

Flock Code	Flock Prefix	Owners Name
TOM	GREYNOR	MR & MRS WYN & HOLLY THOMAS
RWX	RIDGEWAY	WILLIAM RIDGE
JLX	CARN	MISS LOWRI JONES
QMQ	MORWOOD	TOM MORGAN
XPA	MONNOW HILL	MR ALAN POWELL
LKV	LAKEVIEW	G C BEACOM
THX	CHEDWORTH	MR JEREMY THEYER

PS&GHS – SCRAPIE MONITORED SCHEME

Registered flocks entering the Welsh National Sale of Texel Sheep 2022
that have given their permission to PS&GHS to share their details in compliance with GDPR
regulations.

Flock Code	Name	Prefix
DHL	MESSRS CLAYBURY TEXELS	CLAYBURY

iTexel

Online transfers are now available on iTexel
for all registered animals.

Use this to transfer fully registered animals into
your flock (approval may be required from the vendor).

This removes the need to send a proof of purchase to the office.

Birth notified males cannot be registered or transferred until a DNA sample
has been received by the Society.

itexel.uk



Transfers

Conditions Of Sale

All sheep will be sold under the Auspices of the Society and the conditions of sale relevant to individual sales as shown below. These can be viewed at www.texel.uk/societyrules



SCAN HERE



Auctioneers also display copies of the conditions of sale within the market.

Neck tags supplied by the Society must be worn by all sheep for sale prior to the inspection.

Individual animal ID numbers on ear tags must match the ID number displayed in the sales catalogue and substitute catalogue.

DISCLAIMER

The pedigree, performance, genomic information stored by the Society in the iTexel database and published on Society pedigree certificates, reports and general publications is as supplied by, or on behalf of the breeder. The responsibility for the accuracy of the information, therefore, rests solely with the breeder and not with the British Texel Sheep Society Ltd (BTSS).

Health information and footnotes that are stored in iTexel and published in sales catalogues produced by the Society, is supplied by or on behalf of the vendor. The responsibility for the accuracy of the information, therefore, rests solely with the vendor and not with the British Texel Sheep Society Ltd (BTSS).

Performance data and breeding values change over time as new data becomes available. Whilst every effort is made to ensure accuracy of the information contained in Society reports and publications, no responsibility can be accepted by the Society for any errors or any reliance on the use of information. No warranty is given in respect thereof by the BTSS and, to the maximum extent permitted by law, the BTSS have no liability for any loss, damage or injury howsoever caused (including that caused by negligence) or suffered directly or indirectly in relation to information and opinions contained or omitted from BTSS publications.

SCRAPIE MONITORING SCHEME (SMS)

This event will be operated as a 'un-segregated' sale therefore any sheep from SMS flocks will need to meet the SMS rules in regard to ARR/ARR scrapie genotype certification. Members are reminded that if they bring animals to this event which do not have the certification, they will be unable to return with them without risking their flock health status. This is the responsibility of the members.

AUCTION MART RULES FOR VENDORS

The shepherd in charge must bring their respective lots forward, take them to and from the sale ring, attend until delivered and assist in trucking if required as the auctioneers will be responsible only for what is delivered to the purchaser.

Should the shepherd not be in attendance at the time his lots fall to be sold, it will be passed over and taken at the end of sale.

All stock will proceed in the order of the catalogue and all lots not previously entered will be sold only when the list is finished.

All purchases to be settled for and taken delivery of on the day of sale.

No stock can be removed without a pass.

Purchasers should see that their stock is correct before leaving the gates, as no deduction can be made afterwards.

No private sales prior to the Stock being offered by auction will be allowed or recognised by the salesman.

The usual commission must be paid on consignments sold privately within this market.

Every assistance in loading or keeping overnight, for the accommodation only of buyers, will be arranged, as far as possible, by the auctioneers, who will not be responsible for loss or damage incurred thereby.

2021 SELLING PRICES

WELSH NATIONAL SALE MINIMUM SELLING PRICE	Ram Lambs	Shearling Rams	Shearling Ewes
	300gns	300gns	300gns

texelplus

adding value

The Texel Sheep Society provides performance recording services directly to its membership and continues to support the National Terminal Sire Evaluation.

Traits Available	Average	Top 25%	Top 10%
Litter size Indicates prolificacy, number of lambs born alive/dead	0.06	0.09	0.12
Eight-week weight (kg) Growth rate to eight-weeks of age (measured between 42-84 days)	1.72	2.32	2.86
Maternal ability Milk production and the ability to rear lambs	0.05	0.23	0.40
Scan weight (kg) Growth rate to 35-40kg, measured at ultrasound scanning	4.41	5.93	7.29
Muscle depth (mm) Carcase muscling across the loin at 35-40kg, measured by a technician	-0.06	0.37	0.75
Fat depth (mm) Carcase leanness across the loin at 35-40kg, measured by a technician	-0.38	-0.18	-0.01
Gigot muscularity (mm) Thickness of muscle around the gigot, indicating shape; measured by a CT Scanner	0.07	0.38	0.66
Terminal Index Profitable slaughter lambs	167	197	224

The aim of EBVs is to allow buyers to see how much of an animal's performance is due to its breeding (genetics) and how much has been influenced by the environment that they have been kept in – management, feeding, farm location, housing etc

An animal will pass on half of its genetic merit to its offspring.

e.g., if Ram A has a Scan Weight EBV of +3.33 then his progeny at scanning will be over 1.5kg heavier than average

MacG
SEP '21

Robert Laird, Cambwell Texels. "The quality of the Harbro range consistently provides the appropriate nutritional needs for both our pedigree & commercial enterprise"



Clover

PEDIGREE SHEEP RANGE



FERTILITY



LONGEVITY



HEALTH



IMMUNITY

FEEDING FOR SUCCESS

Speak to your Harbro specialist, visit our Country Stores,
or email: farming@harbro.co.uk.



www.harbro.co.uk #FeedingForSuccess

Harbro
QUALITY LIVESTOCK NUTRITION

Index

Name and Address	Flock Prefix	Lot Number
ADAMS, TOMOS CHARLES, TY MEDI, LLANTRITHYD, NR COWBRIDGE, VALE OF GLAMORGAN, CF71 7UB. 07702 183 546. <i>UK0725058</i>	TY-MEDI	76-79M
AMPHLETT & OWENS, JAMES & ELLIE, WOODHOUSE FARM, SHOBDON, LEOMINSTER, HEREFORDSHIRE, HR6 9NL. 07972 653077. <i>UK0301791</i>	TOPWOOD	33F
BENNETT, ROBERT, UPPER HALL, MEIFORD, MEIFORD, POWYS, SY22 6HR. 07562 754 232. <i>UK0700119</i>	PLASUCHA	20-27F, 86-89M, 161-168M
BODEN & DAVIES LTD, MELLOR HALL FARM, MELLOR, STOCKPORT, CHESHIRE, SK6 5LU. 07810 723 498. <i>UK0183463</i>	SPORTSMANS	46-53F, 123-130M
BROWN, RYAN, FAIRVIEW, TOPLEY, RUSHBURY, CHURCH STRETTON, SHROPSHIRE, SY6 7EQ. 07960 132 169. <i>UK0311330</i>	FAIRVIEW	36F, 98M
CLAYBURY TEXELS, ENSDON HOUSE, MONTFORD BRIDGE, SHREWSBURY, SHROPSHIRE, SY4 1EJ. 07968 791 023. <i>UK0304815</i>	CLAYBURY	7-9F, 169-171M
COCKBURN, ROBERT, 2 HILL OF ERROL, ERROL, CRIEFF, PERTHSHIRE, PH2 7TQ. 07990 988 083. <i>UK0542553</i>	KNAP	42-45F, 147-150M
DAVIES & CO, W T, CANLLEFAES UCHAF, PENPARC, CARDIGAN, CEREDIGION, SA43 1SG. 07791 512 302. <i>UK0743689</i>	CANLLEFAES	13-17F, 72-73M
DEAKINS, GETHYN, PENTRUSCO FARM, HEYOPE, KNIGHTON, POWYS, LD7 1PT. 07930 408 308. <i>UK0729694</i>	PENTRUSCO	10F, 151M
ELLIS, MATTHEW, KILCHOAN, SHREWSBURY ROAD, CRESSAGE, SHROPSHIRE, SY5 6AA. 07977 932 435. <i>UK0303754</i>	CRESSAGE	118M
EVANS, D ESMOR, MONFA, GWERNAFFIELD ROAD, MOLD, FLINTSHIRE, CH7 1RE. 07889 137 367. <i>UK0706352</i>	MAERDY	61-65M
EVANS, MYFYR ALED, TAN-YR-ACCAR, LLANRHAEDR, DENBIGH, DENBIGHSHIRE, LL16 4PH. 07974 752 010. <i>UK0705406</i>	RHAEDR	37-38F, 107-109M
EVANS, ROBERT, FOX FARM, HOPE VALLEY, MINSTERLEY, SHROPSHIRE, SY5 0JA. 07947 335 476. <i>UK0313459</i>	HOPE VALLEY	152-153M
GRAY, DAVID, SUNNYCROFT, LINDEAN, SELKIRK, SCOTTISH BORDERS, TD7 4QW. 07841 865 769. <i>UK0562134</i>	TIMA	139M
GRAY, GORDON, SUNNYCROFT, LINDEAN, SELKIRK, SCOTTISH BORDERS, TD7 4QW. 07751 066 053. <i>UK0562134</i>	ETTRICK	28-30F, 114-117M
HARTWRIGHT, N, SPRINGFIELDS, STANFORD BISHOP, BRINGSTY, WORCESTERSHIRE, WR6 5UA. 07903 946 202. <i>UK0300064</i>	WHITEHART	80-84M
HULSE, NICK, ASPLEY VILLA, SLINDON, STAFFORDSHIRE, ST21 6LX. 07860 744 488. <i>UK0165378</i>	ASPLEY	34-35F, 85M, 141-142M
JONES, A EUROS, YNYSTODDEB, GWYNNFE, LLANGADOG, CARMARTHENSHIRE, SA19 9NU. 07484 020 600. <i>UK0751808</i>	YNYSTODDEB	154-155M
JONES, DANIEL, GRAIG FACH, LLANFAIR CAEREINNION, WELSHPOOL, POWYS, SY21 0DW. 07836 255 289. <i>UK0701079</i>	ALDAN	18-19F
JONES, LOWRI, YNYSTODDEB, GWYNNFE, LLANGADOG, CARMARTHENSHIRE, SA19 9NU. 07908 730 046. <i>UK0751808</i>	CARN	140M
LEGGE, NICK, WESTWOOD PARK FARM, WESTWOOD LANE, HATFIELD LEOMINSTER, HEREFORDSHIRE, HR6 0SQ. 07971 452 998. <i>UK0306385</i>	THORNBURY	58-60F, 90-91M, 134-136M

Name and Address	Flock Prefix	Lot Number
MORGAN , TOM, WOODEND HALL FARM, COTON, WHITCHURCH, SHROPSHIRE, SY13 3LJ. 07870 139 901. UK0310589	MORWOOD	105-106M
OARE , GEORGE, PANT-Y-GROES, BRYNFORD, HOLYWELL, FLINTSHIRE, CH8 8LS. 07375 484 075. UK0709695	COACH HOUSE	156-157M
PARRY , M & C, CAEAU GLEISION, MOELFRE, ANGLESEY, LL72 8NA. 07983 253 103. UK0708636	GLEISION	104M
PIERCE , R E J, OLDFIELDS FARM, PULFORD, CHESTER, CHESHIRE, CH4 9EJ. 07732 340 243. UK0173290	OLDFORD	11-12F, 137-138M
POWELL , ALAN, HILL FARM, MARSTOW, ROSS-ON-WYE, HEREFORDSHIRE, HR9 6EQ. 07811 341 383. UK0319320	MONNOW HILL	40-41F, 66-67M, 121-122M
POWELL , MARK, SUE & VIKKI, NEW HOUSE FARM, STOKE-ST-MILBOROUGH, LUDLOW, SHROPSHIRE, SY8 2ER. 07754 286 450. UK0304186	MILBOROUGH	68M
PROCTERS FARM LIMITED , C/O JEFF AIKEN (Flock Manager), MOSS HOUSE FARM SPOUT LANE, WENNINGTON, LANCASHIRE, LA2 8NX. 07805 937 834. UK0188769	PROCTERS	54-57F
PRYCE , C E, YR HELIG, LLANFAIR CAEREINION, WELSHPOOL, POWYS, SY21 0DB. 07790 741 575. UK0710502	CAEREINION	5-6F, 74-75M
ROBINSON & SONS , J F, HIGH FIELDS, CHURCH PREEN, CHURCH STRETTON, SHROPSHIRE, SY6 7LQ. 07870 295 175. UK0303672	PREENBANK	93-97M
RUGGERI , JAMES, GWAELOD-Y-RHOS, LLANFAIR CAEREINION, WELSHPOOL, POWYS, SY21 0DH. 07817 708 169. UK0713158	GYRHOS	119-120M
STELFOX FARMS LIMITED , LOWER SOLBURY FARM, WALWYNS CASTLE, HAVERFORDWEST, PEMBROKESHIRE, SA62 3SD. 07814 912 694. UK0747546	STELFOX	101-103M
THEYER , JAMES, MILL HOUSE, MILL LANE, LITTLE CLANFIELD, OXFORDSHIRE, OX18 2RX. 07867 695 122. UK0292299	CLANFIELD	31-32F, 131-133M
THEYER , JEREMY, THE BARN, AT HILLS FARM, CHEDWORTH, CHELTENHAM, GLOUCESTERSHIRE, GL54 4AH. 07765 007 129. UK0334206	CHEDWORTH	158-160M
TURNER , MICHAEL, 59 DOVEWAY, WATERHOUSES, STOKE-ON-TRENT, ST10 3HG. 07583 381 709. UK0172901	OKEHALL	143M
VAUGHAN FARMS LTD , OAKFIELD FARM, KINGSLAND, HEREFORDSHIRE, HR6 9QU. 07813 885 665. UK0301349	KINGSPARK	1-4F, 110-113M
VERNON , BW, THE BUNGALOW, MARSTON BROOK FARM, MARSTON BANK ROCESTER, STAFFORDSHIRE, ST14 5BT. 07966 016 477. UK0162644	CHARBEN	39F, 146M
WATKINS , R J, GREAT CORRAS FARM, KENTCHURCH, HEREFORD, HEREFORDSHIRE, HR2 0DA. 07971 972 018. UK0300355	CORRAS	69-71M
WILLIAMS , GEORGE, BROADSTONE FARM, CRAVEN ARMS, SHROPSHIRE, SY7 9HQ. 07791 016 079. UK0304146	BROADSTONE	92M
WILLIAMS , JOSEPH, CWMDYLLUAN, VAN, LLANIDLOES, POWYS, SY18 6NR. 07976 781 527. UK0701231	OWL VALLEY	144-145M
WILLIAMS & SON , A E, FOLLY BANK, NEWCASTLE-ON-CLUN, CRAVEN ARMS, SHROPSHIRE, SY7 8QS. UK0303422	CLUN	99-100M

Shearling Ewes

VAUGHAN FARMS LTD

KINGSPARK

VFK

1 KINGSPARK VFK2101971(E1)

Born: 15/02/2021

Inbreeding coefficient: 6.8

Sire: PLASUCHA ALL STAR BFE1707062(E) by KNOCK YANKEE
Dam: WEV1600676(E) by SPORTSMANS TREMENDOUS II BGS1200471(E)
Dam first at Three counties show. Super ewe

2 KINGSPARK VFK2101972(E2)

Born: 18/02/2021

Inbreeding coefficient: 6.3

Sire: GARNGOUR CRAFTSMAN CJN1906202(E1) by SILVERMERE BALTIC
Dam: BFE1808053(E1) by PLASUCHA ABERFELDY BFE1707080(E)
Dams full sister bred Balmoral champion 2022. sisters sold 5k x 2

3 KINGSPARK VFK2102030(2)

Born: 24/02/2021

Inbreeding coefficient: 6.9

Sire: RHAADR DRUM MAJOR ENM2002360(E2) by TEIGLUM YOUNGGUN
Dam: VFK1901617(2) by PLASUCHA BINGO BFE1808063(E1)
Sire- 15K. G.dam bred gimmers to 8k

4 KINGSPARK VFK2101959(1)

Born: 24/02/2021

Inbreeding coefficient: 8.3

Sire: RHAADR DRUM MAJOR ENM2002360(E2) by TEIGLUM YOUNGGUN
Dam: VFK1801519(2) by PLASUCHA ABERFELDY BFE1707080(E)
Sire- 15K

Mr C E PRYCE

CAEREINION

PEC

5 CAEREINION PEC2100919(3)

Born: 06/03/2021

Inbreeding coefficient: 7.1

Sire: CAEREINION DYNAMITE PEC2000806(2) by KITROB BANGOR
Dam: PEC1800658(E1) by GRANITE UNTOUCHABLE IGM1307611(E)

EBV	Litter Sz	8 Wk Wgt	Maternal	Scan Wgt	Musc Dpth	Fat Dpth	CT Gigot Musc	Index
	0.05	2.07kgs	0.25kgs	4.99kgs	-0.77mm	0.09mm	-1.13mm	184
Accuracy	57%	65%	65%	76%	73%	75%	29%	69%

Dam is a massive prolific ewe.

6 CAEREINION PEC2100925(3)

Born: 08/03/2021

Inbreeding coefficient: 3.5

Sire: BLAENCAR BANDIT YME1805441(E1) by EDEN VALLEY WIZ KID
Dam: PEC1700544(E) by KIMBOLTON VENTURER PPK1400423(E)

EBV	Litter Sz	8 Wk Wgt	Maternal	Scan Wgt	Musc Dpth	Fat Dpth	CT Gigot Musc	Index	Ranking
	0.07	2.91kgs	0.50kgs	7.97kgs	-0.59mm	-0.39mm	0.27mm	215	TOP 25%
Accuracy	68%	63%	63%	69%	71%	73%	31%	65%	

Dam has produced rams to 1600gns. Sire - Renowned ram.

MESSRS CLAYBURY TEXELS

CLAYBURY

DHL

7 CLAYBURY DHL2101853(E2)

Born: 20/02/2021

Inbreeding coefficient: 9.1

Sire: CLAYBURY DELTA FORCE DHL2001637(E2) by STRATHBOGIE CANNONBALL
Dam: DHL1701203(E) by COWAL YOUR MY BOY CKC1607584(2)

EBV	Litter Sz	8 Wk Wgt	Maternal	Scan Wgt	Musc Dpth	Fat Dpth	CT Gigot Musc	Index	Ranking
	0.11	3.85kgs	0.20kgs	9.77kgs	-0.11mm	-0.53mm	0.44mm	267	TOP 5%
Accuracy	53%	70%	70%	78%	76%	78%	17%	73%	

Full sister to 3,600gns C. Eye of the Tiger and Maternal Sister to 5,000gns C.Dragonheart

8

CLAYBURY

DHL2101832(E1)

Born: 19/02/2021

Inbreeding coefficient: 8.9

Sire: STRATHBOGIE CANNONBALL IJ51903555(E2) by SPORTSMANS BENCHMARK

Dam: DHL1601099(1) by STANTON VANTAGE II WPS1400599(E)

EBV	Litter Sz	8 Wk Wgt	Maternal	Scan Wgt	Musc Dpth	Fat Dpth	CT Gigot Musc	Index
	0.05	3.02kgs	-0.31kgs	7.63kgs	-1.98mm	-0.64mm	0.18mm	180
Accuracy	63%	71%	71%	79%	77%	78%	30%	74%

Maternal sister to 30,000gns C. Basic Instinct

9

CLAYBURY

DHL2101820(E1)

Born: 19/02/2021

Inbreeding coefficient: 9.1

Sire: CLAYBURY DELTA FORCE DHL2001637(E2) by STRATHBOGIE CANNONBALL

Dam: DHL1701203(E) by COWAL YOUR MY BOY CKC1607584(2)

EBV	Litter Sz	8 Wk Wgt	Maternal	Scan Wgt	Musc Dpth	Fat Dpth	CT Gigot Musc	Index	Ranking
	0.11	4.43kgs	0.20kgs	11.34kgs	-0.29mm	-1.05mm	0.44mm	280	TOP 1%
Accuracy	53%	70%	70%	78%	76%	78%	17%	73%	

Full sister to 3,600gns C. Eye of the Tiger and Maternal Sister to 5,000gns C.Dragonheart

GETHYN DEAKINS

PENTRUSCO

DKI

10

PENTRUSCO

DKI2100616(E1)

Born: 29/01/2021

Inbreeding coefficient: 6.7

Sire: PENTRUSCO DOUBLE BARREL DKI2000542(E1) by SPORTSMANS A STAR

Dam: DKI1900512(E1) by STRATHBOGIE YES SIR IJ51600754(E)

Fast fleshing, characterful gimmer, grand daughter to 4k gns Racecourse ewe

R E J PIERCE

OLDFORD

PRE

11

OLDFORD

PRE2101396(E1)

Born: 27/02/2021

Inbreeding coefficient: 9.0

Sire: CRAIG DOUGLAS DANCER XSR2023203(1) by SPORTSMANS CANNON BALL

Dam: PRE1901175(E2) by AULHOUSEBURN BOLT BYZ1820691(E2)

EBV	Litter Sz	8 Wk Wgt	Maternal	Scan Wgt	Musc Dpth	Fat Dpth	CT Gigot Musc	Index	Ranking
	0.06	4.08kgs	-0.31kgs	10.65kgs	-2.46mm	-0.65mm	-0.25mm	198	TOP 25%
Accuracy	47%	69%	69%	77%	74%	76%	17%	72%	

12

OLDFORD

PRE2101395(E2)

Born: 28/02/2021

Inbreeding coefficient: 9.0

Sire: CRAIG DOUGLAS DANCER XSR2023203(1) by SPORTSMANS CANNON BALL

Dam: PRE1901175(E2) by AULHOUSEBURN BOLT BYZ1820691(E2)

EBV	Litter Sz	8 Wk Wgt	Maternal	Scan Wgt	Musc Dpth	Fat Dpth	CT Gigot Musc	Index
	0.06	2.99kgs	-0.31kgs	7.66kgs	-1.92mm	-0.80mm	-0.25mm	155
Accuracy	47%	61%	61%	64%	63%	64%	17%	62%

W T DAVIES & CO

CANLLEFAES

DWC

13

CANLLEFAES

DWC2102605(2)

Born: 08/04/2021

Inbreeding coefficient: 4.1

Sire: AULHOUSEBURN DUTCH COURAGE BYZ2025872(E1) by AULHOUSEBURN CORKY

Dam: DWC1601232(2) by SCOLTON URANIUM RWS1300351(2)

14

CANLLEFAES

DWC2102587(2)

Born: 25/03/2021

Inbreeding coefficient: 3.9

Sire: AULHOUSEBURN DUTCH COURAGE BYZ2025872(E1) by AULHOUSEBURN CORKY

Dam: DWC1701481(2) by TALCOED YOU KNOW HQT1603058(E)

15

CANLLEFAES

DWC2102581(2)

Born: 25/03/2021

Inbreeding coefficient: 4.1

Sire: AULHOUSEBURN DUTCH COURAGE BYZ2025872(E1) by AULHOUSEBURN CORKY

Dam: DWC1601268(2) by SCOLTON URANIUM RWS1300351(2)

16

CANLLEFAES

DWC2102565(2)

Born: 23/03/2021

Inbreeding coefficient: 6.5

Sire: SCROGTONHEAD BRIGHT SPARK GLH1813048(1) by CLINTERTY YUGA KHAN

Dam: DWC1901972(2) by CURLEY BIG MAC TYC1800785(E2)

17

CANLLEFAES

DWC2102580(2)

Born: 25/03/2021

Inbreeding coefficient: 4.1

Sire: AULHOUSEBURN DUTCH COURAGE BYZ2025872(E1) by AULHOUSEBURN CORKY

Dam: DWC1601268(2) by SCOLTON URANIUM RWS1300351(2)

DANIEL JONES

ALDAN

JDY

18

ALDAN

JDY2101143(E1)

Born: 28/02/2021

Inbreeding coefficient: 8.9

Sire: SPORTSMANS BOOM BGS1803204(E1) by GARNGOUR ALABAMA

Dam: JDY1700644(E) by CASTLECAIRN VAVAVOOM RNA1400593(3)

19

ALDAN

JDY2101138(E1)

Born: 28/02/2021

Inbreeding coefficient: 8.9

Sire: SPORTSMANS BOOM BGS1803204(E1) by GARNGOUR ALABAMA

Dam: JDY1700644(E) by CASTLECAIRN VAVAVOOM RNA1400593(3)

ROBERT BENNETT

PLASUCHA

BFE

20

PLASUCHA

BFE2111143(E1)

Born: 13/03/2021

Inbreeding coefficient: 6.3

Sire: MIDLOCK DYNAMO WKM2030262(E2) by SPORTSMANS CANNON BALL

Dam: BFE1707163(1) by BRACKENRIDGE YOUNG GUN NAB1601733(E)

EBV	Litter Sz	8 Wk Wgt	Maternal	Scan Wgt	Musc Dpth	Fat Dpth	CT Gigot Musc	Index
	0.07	2.05kgs	-0.03kgs	5.16kgs	-0.42mm	-0.67mm	0.20mm	167
Accuracy	56%	59%	59%	63%	62%	63%	15%	61%

Dam our best breeding ewe, 10 daughters retained in flock

21

PLASUCHA

BFE2111184(E1)

Born: 13/03/2021

Inbreeding coefficient: 5.3

Sire: PLASUCHA BOSS MAN BFE1808061(E1) by MULLAN AWESOME

Dam: BFE1909194(E1) by TEIGLUM BRAVEHEART CFT1805750(E1)

EBV	Litter Sz	8 Wk Wgt	Maternal	Scan Wgt	Musc Dpth	Fat Dpth	CT Gigot Musc	Index
	0.05	2.73kgs	-0.16kgs	6.43kgs	0.32mm	-0.94mm	0.54mm	184
Accuracy	58%	55%	55%	59%	58%	59%	19%	57%

ET sister to 3k Everest sold here last year

22

PLASUCHA

BFE2111089(E1)

Born: 12/03/2021

Inbreeding coefficient: 5.3

Sire: PLASUCHA BOSS MAN BFE1808061(E1) by MULLAN AWESOME

Dam: BFE1909086(E1) by TEIGLUM BRAVEHEART CFT1805750(E1)

EBV	Litter Sz	8 Wk Wgt	Maternal	Scan Wgt	Musc Dpth	Fat Dpth	CT Gigot Musc	Index	Ranking
	0.03	3.01kgs	-0.16kgs	7.17kgs	0.21mm	-0.73mm	0.54mm	199	TOP 25%
Accuracy	64%	53%	53%	56%	55%	55%	19%	54%	

Dam ET sister to 1.8k Celtic Warrior. Sire sold 20k

23

PLASUCHA

BFE2111103(E1)

Born: 12/03/2021

Inbreeding coefficient: 6.7

Sire: MIDLOCK DYNAMO WKM2030262(E2) by SPORTSMANS CANNON BALL

Dam: BFE2010097(E1) by PLASUCHA BOSS MAN BFE1808061(E1)

EBV	Litter Sz	8 Wk Wgt	Maternal	Scan Wgt	Musc Dpth	Fat Dpth	CT Gigot Musc	Index
	0.08	2.63kgs	-0.06kgs	6.63kgs	-0.39mm	-0.88mm	0.27mm	183
Accuracy	46%	51%	51%	55%	54%	55%	15%	53%

ET sister to 1st prize gimmer Shropshire Show & first in for Lanark. Dam ET sister to 4.5k Donny Brasco

24

PLASUCHA

BFE2111156(E1)

Born: 14/03/2021

Inbreeding coefficient: 7.1

Sire: MIDLOCK DYNAMO WKM2030262(E2) by SPORTSMANS CANNON BALL

Dam: CKC1809806(E1) by PLASUCHA ALL STAR BFE1707062(E)

EBV	Litter Sz	8 Wk Wgt	Maternal	Scan Wgt	Musc Dpth	Fat Dpth	CT Gigot Musc	Index
	0.09	2.26kgs	-0.10kgs	5.62kgs	-0.92mm	-0.01mm	0.60mm	174
Accuracy	47%	57%	57%	62%	61%	62%	16%	59%

Dam a massive Cowal ewe purchased 4.5k

25

PLASUCHA

BFE2111123(E1)

Born: 13/03/2021

Inbreeding coefficient: 5.4

Sire: GARNGOUR UPPERCLASS CJN1302220(E) by AUCHENCAIRN TELLO

Dam: BFE1909214(E1) by TEIGLUM BRAVEHEART CFT1805750(E1)

EBV	Litter Sz	8 Wk Wgt	Maternal	Scan Wgt	Musc Dpth	Fat Dpth	CT Gigot Musc	Index	Ranking
	0.09	1.94kgs	0.31kgs	4.45kgs	1.53mm	-0.55mm	0.30mm	199	TOP 25%
Accuracy	65%	64%	64%	67%	66%	66%	22%	65%	

Dam a massive Braveheart ewe. 2 ET sisters sold to Lakeview

26

PLASUCHA

BFE2111231(E)

Born: 10/02/2021

Sire: PLASUCHA BOSS MAN BFE1808061(E1) by MULLAN AWESOME

Dam: BFE1909097(E1) by TEIGLUM BRAVEHEART CFT1805750(E1)

ET sister to 1st prize gimmer Shropshire Show & first in for Lanark. Dam ET sister to 4.5k Donny Brasco

27

PLASUCHA

BFE2111106(2)

Born: 12/03/2021

Inbreeding coefficient: 6.9

Sire: AULDHOUSEBURN DASH OF CLASS BYZ2025892(E1) by AULDHOUSEBURN CORKY

Dam: BBY1601065(E) by TOPHILL WALL ST HPH1500816(E)

EBV	Litter Sz	8 Wk Wgt	Maternal	Scan Wgt	Musc Dpth	Fat Dpth	CT Gigot Musc	Index	
	0.05	2.01kgs	-0.14kgs	5.41kgs	-0.86mm	0.12mm	0.19mm	160	
Accuracy	54%	59%	59%	64%	63%	64%	21%	61%	

Dam ET sister to 52k Yogi Bear

MR GORDON GRAY

ETTRICK

GGH

28

ETTRICK

GGH2111178(E2)

Born: 17/02/2021

Inbreeding coefficient: 8.9

Sire: DOUGANHILL DESPERADO GCK2013090(E1) by PROCTERS U.S PRESIDENT

Dam: GGH1909035(E1) by MIDCOMBE BRIGADIER MOE1800266(E1)

EBV	Litter Sz	8 Wk Wgt	Maternal	Scan Wgt	Musc Dpth	Fat Dpth	CT Gigot Musc	Index	Ranking
	0.08	3.11kgs	0.27kgs	7.74kgs	-0.19mm	-0.69mm	0.00mm	199	TOP 25%
Accuracy	47%	69%	69%	78%	76%	78%	25%	72%	

Dam is ET sister to dam of 17 Everest. same family as 7500 7200 6800 Kelso rams. ET sister retained.

29

ETTRICK

GGH2111174(E2)

Born: 17/03/2021

Inbreeding coefficient: 5.6

Sire: DOUGANHILL DESPERADO GCK2013090(E1) by PROCTERS U.S PRESIDENT

Dam: GGH1707160(E) by ETTRICK YAGER BOMB GGH1606155(E)

EBV	Litter Sz	8 Wk Wgt	Maternal	Scan Wgt	Musc Dpth	Fat Dpth	CT Gigot Musc	Index	Ranking
	0.07	4.06kgs	-0.02kgs	10.62kgs	-0.14mm	-0.43mm	0.61mm	266	TOP 5%
Accuracy	56%	63%	63%	66%	65%	66%	29%	64%	

Dam is Gdam of 17k Everest and dam to lot 1. One of our top ewes. ET sister retained

30

ETTRICK

GGH2112499(E2)

Born: 17/03/2021

Inbreeding coefficient: 5.1

Sire: DOUGANHILL DESPERADO GCK2013090(E1) by PROCTERS U.S PRESIDENT

Dam: GGH1707106(E) by CLINTERTY YOU CRACKER BBY1601063(E)

EBV	Litter Sz	8 Wk Wgt	Maternal	Scan Wgt	Musc Dpth	Fat Dpth	CT Gigot Musc	Index	
	0.09	3.04kgs	0.30kgs	8.20kgs	-1.06mm	-0.72mm	-0.06mm	194	
Accuracy	58%	63%	63%	66%	66%	66%	32%	65%	

Dam 1st ewe GYS 2019. Cocky Bob and Cockney Rebel family. ET sister retained

- BW VERNON** **CHARBEN** **VBC**
- 39 CHARBEN VBC2104379(E2)** **Born: 12/02/2021**
Inbreeding coefficient: 7.6
- Sire: SPORTSMANS CANNON BALL BGS1903730(E1) by GARNGOUR ALABAMA
 Dam: HBR1300572(1) by KNOCK TRAVIS HAK1200402(E)
 Dam still going strong at 9 years old
- MR ALAN POWELL** **MONNOW HILL** **XPA**
- 40 MONNOW HILL XPA2100002(2)** **Born: 11/02/2021**
Inbreeding coefficient: 4.9
- Sire: CLADDAGH DYNAMITE GEN2004259(1) by HEXEL BORN TO BE WILD
 Dam: ONH1900773(2) by PEACEHAY YA BELTER CFP1601450(E)
- 41 MONNOW HILL XPA2100013(1)** **Born: 14/02/2021**
Inbreeding coefficient: 4.1
- Sire: LOOSEBEARE DYNAMO QEL2010884(1) by STAINTON VALOUR
 Dam: QEL1909829(E2) by BRIJON APACHE REW1705747(E)
- ROBERT COCKBURN** **KNAP** **KCP**
- 42 KNAP KCP2105746(E1)** **Born: 13/03/2021**
Inbreeding coefficient: 7.4
- Sire: SPORTSMANS DEAL BREAKER BGS2004511(E1) by GARNGOUR CRAFTSMAN
 Dam: CKP1903827(E1) by KNOCK BANKER HAK1801281(E1)
 ET sisters sold for 15k 3k 2.5k 2k maternal sisters sold for 4.5k&2.5k Dam is super big Yuga Khan ewe.
- 43 KNAP KCP2105808(E1)** **Born: 14/03/2021**
Inbreeding coefficient: 10.0
- Sire: SPORTSMANS DEAL BREAKER BGS2004511(E1) by GARNGOUR CRAFTSMAN
 Dam: CKP2004684(E1) by SPORTSMANS CANNON BALL BGS1903730(E1)
 Dam is Textravaganza champion Daisy Duke, ET sister is our best stock gimmer.
- 44 KNAP KCP2105647(E2)** **Born: 14/02/2021**
Inbreeding coefficient: 6.7
- Sire: SPORTSMANS CANNON BALL BGS1903730(E1) by GARNGOUR ALABAMA
 Dam: CKP1802749(E2) by MULLAN AMIGO HBN1701499(E)
 Full brother sold for 8.5k, ET sister sold for 2.2k two other ET sisters are in show team.
- 45 KNAP KCP2105705(E1)** **Born: 13/03/2021**
Inbreeding coefficient: 5.8
- Sire: SPORTSMANS CANNON BALL BGS1903730(E1) by GARNGOUR ALABAMA
 Dam: CKP1701792(2) by PROCTERS YANKEE PFD1600623(E)
 ET sister sold for 4.1k ET brothers sold for 2.9k & 2.6k maternal sister sold for 3.6k.
- BODEN & DAVIES LTD** **SPORTSMANS** **BGS**
- 46 SPORTSMANS BGS2104998(E1)** **Born: 19/02/2021**
Inbreeding coefficient: 7.3
- Sire: CASTLECAIRN DOODLEBUG RNA2001134(E1) by HAYMOUNT CRACKERJACK
 Dam: PUG1901025(E1) by GARNGOUR ALABAMA CJN1704960(E)

EBV	Litter Sz	8 Wk Wgt	Maternal	Scan Wgt	Musc Dpth	Fat Dpth	CT Gigot Musc	Index	Ranking
	0.12	2.94kgs	-0.04kgs	7.60kgs	-0.14mm	-0.71mm	0.08mm	218	TOP 25%
Accuracy	49%	59%	59%	62%	61%	62%	23%	60%	

Doodlebug purchased for 38,000gns at Carlisle 2020

- 47 SPORTSMANS BGS2105066(E1)** **Born: 23/02/2021**
Inbreeding coefficient: 6.8

Sire: CASTLECAIRN DOODLEBUG RNA2001134(E1) by HAYMOUNT CRACKERJACK
 Dam: BGS1702665(E) by TEIGLUM YOUNGGUN CFT1604569(E)

EBV	Litter Sz	8 Wk Wgt	Maternal	Scan Wgt	Musc Dpth	Fat Dpth	CT Gigot Musc	Index
	0.11	2.55kgs	-0.31kgs	6.47kgs	-0.06mm	-1.00mm	0.53mm	184
Accuracy	54%	64%	64%	67%	66%	67%	17%	65%

48 SPORTSMANS**BGS2105063(2)****Born: 22/02/2021****Inbreeding coefficient: 8.5**

Sire: SPORTSMANS DOUBLE DIAMOND BGS2004411(E1) by GARNGOUR CRAFTSMAN

Dam: PFD1903130(2) by SPORTSMANS BATMAN BGS1803201(E1)

EBV	Litter Sz	8 Wk Wgt	Maternal	Scan Wgt	Musc Dpth	Fat Dpth	CT Gigot Musc	Index
	0.08	3.11kgs	-0.25kgs	7.59kgs	-0.94mm	-0.48mm	-0.25mm	195
Accuracy	59%	58%	58%	59%	59%	59%	15%	59%

49 SPORTSMANS**BGS2105015(E1)****Born: 19/02/2021****Inbreeding coefficient: 7.0**

Sire: CASTLECAIRN DOODLEBUG RNA2001134(E1) by HAYMOUNT CRACKERJACK

Dam: BGS1803086(E1) by FORDAFOURIE AMALERT LAF1700467(E)

EBV	Litter Sz	8 Wk Wgt	Maternal	Scan Wgt	Musc Dpth	Fat Dpth	CT Gigot Musc	Index
	0.08	2.55kgs	-0.13kgs	6.65kgs	0.15mm	-1.20mm	0.48mm	193
Accuracy	52%	63%	63%	66%	65%	66%	19%	64%

50 SPORTSMANS**BGS2105097(E1)****Born: 12/03/2021****Inbreeding coefficient: 7.2**

Sire: CASTLECAIRN DOODLEBUG RNA2001134(E1) by HAYMOUNT CRACKERJACK

Dam: BGS1702637(E) by TEIGLUM YOUNGGUN CFT1604569(E)

EBV	Litter Sz	8 Wk Wgt	Maternal	Scan Wgt	Musc Dpth	Fat Dpth	CT Gigot Musc	Index
	0.09	3.13kgs	-0.04kgs	8.01kgs	-0.38mm	-1.17mm	-0.06mm	195
Accuracy	51%	63%	63%	67%	66%	67%	17%	64%

51 SPORTSMANS**BGS2105046(E1)****Born: 21/02/2021****Inbreeding coefficient: 7.3**

Sire: CASTLECAIRN DOODLEBUG RNA2001134(E1) by HAYMOUNT CRACKERJACK

Dam: PUG1901025(E1) by GARNGOUR ALABAMA CJN1704960(E)

EBV	Litter Sz	8 Wk Wgt	Maternal	Scan Wgt	Musc Dpth	Fat Dpth	CT Gigot Musc	Index	Ranking
	0.12	2.94kgs	-0.04kgs	7.60kgs	-0.14mm	-0.71mm	0.08mm	218	TOP 25%
Accuracy	49%	59%	59%	62%	61%	62%	23%	60%	

52 SPORTSMANS**BGS2104879(E1)****Born: 10/02/2021****Inbreeding coefficient: 8.2**

Sire: CASTLECAIRN DOODLEBUG RNA2001134(E1) by HAYMOUNT CRACKERJACK

Dam: BGS2004575(E1) by GARNGOUR CRAFTSMAN CJN1906202(E1)

EBV	Litter Sz	8 Wk Wgt	Maternal	Scan Wgt	Musc Dpth	Fat Dpth	CT Gigot Musc	Index
	0.10	2.42kgs	-0.14kgs	5.99kgs	-0.38mm	-1.13mm	0.19mm	166
Accuracy	48%	60%	60%	63%	63%	63%	14%	61%

53 SPORTSMANS**BGS2104905(E1)****Born: 15/02/2021****Inbreeding coefficient: 7.3**

Sire: CASTLECAIRN DOODLEBUG RNA2001134(E1) by HAYMOUNT CRACKERJACK

Dam: PUG1901025(E1) by GARNGOUR ALABAMA CJN1704960(E)

EBV	Litter Sz	8 Wk Wgt	Maternal	Scan Wgt	Musc Dpth	Fat Dpth	CT Gigot Musc	Index	Ranking
	0.12	2.94kgs	-0.04kgs	7.60kgs	-0.14mm	-0.71mm	0.08mm	218	TOP 25%
Accuracy	49%	59%	59%	62%	61%	62%	23%	60%	

PROCTERS FARM LIMITED**PROCTERS****PFD****54 PROCTERS****PFD2104582(E1)****Born: 13/03/2021****Inbreeding coefficient: 6.2**

Sire: SPORTSMANS DOUBLE DIAMOND BGS2004411(E1) by GARNGOUR CRAFTSMAN

Dam: XMM1815496(E2) by KNAP ALLIGATOR CKP1701791(2)

EBV	Litter Sz	8 Wk Wgt	Maternal	Scan Wgt	Musc Dpth	Fat Dpth	CT Gigot Musc	Index	Ranking
	0.07	4.30kgs	-0.17kgs	10.75kgs	-0.67mm	0.39mm	0.16mm	279	TOP 1%
Accuracy	51%	70%	70%	78%	76%	78%	12%	73%	

Dam purchased for 22,000gns Lanark Crackers 2019

55 PROCTERS PFD2104580(E1) Born: 12/03/2021
Inbreeding coefficient: 6.2
Sire: SPORTSMANS DOUBLE DIAMOND BGS2004411(E1) by GARNGOUR CRAFTSMAN
Dam: XMM1815496(E2) by KNAP ALLIGATOR CKP1701791(2)

EBV	Litter Sz	8 Wk Wgt	Maternal	Scan Wgt	Musc Dpth	Fat Dpth	CT Gigot Musc	Index	Ranking
	0.07	3.63kgs	-0.17kgs	8.97kgs	-0.37mm	-0.59mm	0.16mm	235	TOP 10%
Accuracy	51%	70%	70%	78%	76%	78%	12%	73%	

Full sister to our first lot

56 PROCTERS PFD2104540(2) Born: 16/02/2021
Inbreeding coefficient: 4.6
Sire: SPORTSMANS DOUBLE DIAMOND BGS2004411(E1) by GARNGOUR CRAFTSMAN
Dam: PFD1802305(2) by THRUNTON YOUNIQUE CJH1603781(1)

EBV	Litter Sz	8 Wk Wgt	Maternal	Scan Wgt	Musc Dpth	Fat Dpth	CT Gigot Musc	Index	
	0.13	1.56kgs	-0.43kgs	3.35kgs	-1.87mm	-0.85mm	0.14mm	83	
Accuracy	60%	69%	69%	78%	75%	77%	12%	72%	

57 PROCTERS PFD2104560(E2) Born: 20/02/2021
Inbreeding coefficient: 8.6
Sire: SPORTSMANS DOUBLE DIAMOND BGS2004411(E1) by GARNGOUR CRAFTSMAN
Dam: PFD1903452(2) by FORDAFOURIE BALVENIE LAF1800476(E2)

EBV	Litter Sz	8 Wk Wgt	Maternal	Scan Wgt	Musc Dpth	Fat Dpth	CT Gigot Musc	Index	
	0.07	2.19kgs	-0.20kgs	4.98kgs	-1.66mm	-0.94mm	-0.06mm	116	
Accuracy	58%	70%	70%	78%	76%	78%	13%	73%	

NICK LEGGE THORNBURY LEN
58 THORNBURY LEN2101212(E1) Born: 15/02/2021
Inbreeding coefficient: 5.9
Sire: USK VALE CHAMPAGNE CHARLIE UVP1903601(E1) by HEXEL BORN TO BE WILD
Dam: LEN1900844(E1) by CAMBWELL BOSS HOGG LTC1804038(E1)

59 THORNBURY LEN2101276(E1) Born: 20/03/2021
Inbreeding coefficient: 6.6
Sire: USK VALE CHAMPAGNE CHARLIE UVP1903601(E1) by HEXEL BORN TO BE WILD
Dam: ENM1701803(2) by CLINTERTY YUGA KHAN BBY1601056(E)

60 THORNBURY LEN2101200(E2) Born: 25/03/2021
Inbreeding coefficient: 7.5
Sire: MIDLOCK DYNAMO WKM2030262(E2) by SPORTSMANS CANNON BALL
Dam: LEN1900848(E1) by TAMNAMONEY BULLSEYE SRY1801829(E2)

Shearling Rams

D ESMOR EVANS				MAERDY				EDO																																	
61	MAERDY ERNIE			EDO2102942(2)				Born: 10/02/2021 Inbreeding coefficient: 6.9																																	
Sire: HEXEL DJANGO MZH2000640(E1) by PROCTERS CHUMBA WUMBA Dam: CKC1911071(1) by AULHOUSEBURN BOSS BYZ1820746(E2)																																									
62	MAERDY EDWARD			EDO2103007(E1)				Born: 20/03/2021 Inbreeding coefficient: 4.4																																	
Sire: CANLLEFAES BRIGHT SPARK DWC1801676(1) by TALCOED YOU KNOW Dam: DNN1901439(E1) by KNAP BRIGHT SPARK CKP1802748(E2)																																									
63	MAERDY ERIC			EDO2103039(3)				Born: 27/03/2021 Inbreeding coefficient: 6.9																																	
Sire: FORKINS DRAMBUIE GAF2002820(E1) by PROCTERS COCKTAIL Dam: EDO1902244(2) by GARNGOUR AMBASSADOR CJN1704914(E)																																									
64	MAERDY EDWIN			EDO2103045(2)				Born: 24/03/2021 Inbreeding coefficient: 5.2																																	
Sire: ROXBURGH CHEEKY CHAP EJ1904361(2) by HAYMOUNT ARNOTT Dam: EDO1501174(2) by BRACKENRIDGE STRONGBOW NAB1100063(E)																																									
65	MAERDY ELFID			EDO2103052(2)				Born: 27/03/2021 Inbreeding coefficient: 3.9																																	
Sire: ROXBURGH CHEEKY CHAP EJ1904361(2) by HAYMOUNT ARNOTT Dam: EDO1601431(3) by VORN WATERLOO VJV1500655(E)																																									
MR ALAN POWELL				MONNOW HILL				XPA																																	
66	MONNOW HILL EPIC			XPA2100003(2)				Born: 18/02/2021 Inbreeding coefficient: 9.5																																	
Sire: ETTRICK DARK KNIGHT GGH2010073(E2) by BRACKENRIDGE COMMANDER Dam: BRF1900411(E1) by AULHOUSEBURN BOLT BYZ1820691(E2)																																									
67	MONNOW HILL EVOQUE			XPA2100006(3)				Born: 20/02/2021 Inbreeding coefficient: 6.0																																	
Sire: ETTRICK DARK KNIGHT GGH2010073(E2) by BRACKENRIDGE COMMANDER Dam: HWN1904398(3) by CHERRYVALE SHERGAR GCN1100382(2)																																									
MARK SUE & VIKKI POWELL				MILBOROUGH				PVM																																	
68	MILBOROUGH EINSTEIN			PVM2102825(2)				Born: 14/03/2021 Inbreeding coefficient: 3.9																																	
Sire: MILBOROUGH CHARMING MAN PVM1902217(E1) by WALLINGTON SPECIAL BREW Dam: DHL1801319(E1) by STRATHBOGIE YOU1 IJS1600756(E)																																									
<table><tr><td>EBV</td><td>Litter Sz</td><td>8 Wk Wgt</td><td>Maternal</td><td>Scan Wgt</td><td>Musc Dpth</td><td>Fat Dpth</td><td>CT Gigot Musc</td><td>Index</td><td>Ranking</td></tr><tr><td></td><td>0.06</td><td>1.32kgs</td><td>0.45kgs</td><td>2.82kgs</td><td>1.99mm</td><td>0.10mm</td><td>0.94mm</td><td>210</td><td>TOP 25%</td></tr><tr><td>Accuracy</td><td>57%</td><td>67%</td><td>67%</td><td>76%</td><td>72%</td><td>74%</td><td>32%</td><td>71%</td><td></td></tr></table>												EBV	Litter Sz	8 Wk Wgt	Maternal	Scan Wgt	Musc Dpth	Fat Dpth	CT Gigot Musc	Index	Ranking		0.06	1.32kgs	0.45kgs	2.82kgs	1.99mm	0.10mm	0.94mm	210	TOP 25%	Accuracy	57%	67%	67%	76%	72%	74%	32%	71%	
EBV	Litter Sz	8 Wk Wgt	Maternal	Scan Wgt	Musc Dpth	Fat Dpth	CT Gigot Musc	Index	Ranking																																
	0.06	1.32kgs	0.45kgs	2.82kgs	1.99mm	0.10mm	0.94mm	210	TOP 25%																																
Accuracy	57%	67%	67%	76%	72%	74%	32%	71%																																	
R J WATKINS				CORRAS				WWC																																	
69	CORRAS ESCOBAR			WWC2107948(2)				Born: 18/02/2021 Inbreeding coefficient: 3.5																																	
Sire: ARTNAGULLION CORRAS MBF1903987(2) by MIDLOCK YOHANN Dam: WWC1702101(2) by HOLLYFORD VENUS DHA1400241(1) Escobar was Male Champion Texel at this year's Royal Welsh Show																																									
70	CORRAS EAGLE			WWC2107927(3)				Born: 17/02/2021 Inbreeding coefficient: 2.8																																	
Sire: ROXBURGH APACHE EJ1703518(1) by KIMBOLTON VA VA VOOM Dam: WWC1803051(1) by BALLAGLONNEY VIDENT BLB1400676(1)																																									
71	CORRAS EMPIRE			WWC2107888(2)				Born: 14/02/2021 Inbreeding coefficient: 4.7																																	
Sire: CORRAS CUPIDS HILL WWC1904624(1) by ROXBURGH APACHE Dam: WWC1601987(2) by HOLLYFORD VENUS DHA1400241(1)																																									

W T DAVIES & CO**CANLLEFAES****DWC****72 CANLLEFAES EMPOWER DW2C2102480(1)****Born: 04/03/2021****Inbreeding coefficient: 3.6**

Sire: ELLEN VALLEY CAPELLO YGW1905924(1) by SCOTSMAN BULLSEYE

Dam: DWC1801663(2) by TALCOED YOU KNOW HQT1603058(E)

73 CANLLEFAES ENTERPRISE DW2C2102478(2)**Born: 04/03/2021****Inbreeding coefficient: 4.2**

Sire: ELLEN VALLEY CAPELLO YGW1905924(1) by SCOTSMAN BULLSEYE

Dam: DWC1701558(3) by TALCOED YOU KNOW HQT1603058(E)

Mr C E PRYCE**CAEREINION****PEC****74 CAEREINION EMPEROR PEC2100918(E1)****Born: 06/03/2021****Inbreeding coefficient: 5.0**

Sire: SPORTSMANS V8 BGS1401207(E) by MILNBANK UR THE BOY

Dam: PEC1700565(2) by CAMBWELL TRADEMARK LTC1201161(3)

EBV	Litter Sz	8 Wk Wgt	Maternal	Scan Wgt	Musc Dpth	Fat Dpth	CT Gigot Musc	Index	Ranking
	0.15	4.08kgs	0.37kgs	9.85kgs	-0.69mm	-0.28mm	-1.80mm	223	TOP 25%
Accuracy	67%	89%	89%	94%	93%	94%	60%	92%	

Semen has been collected from this animal, or it has been used as a sire.

A very correct ram that has worked successfully as a lamb. Shearling rams by v8 have sold for 6k.

75 CAEREINION EMPIRE PEC2100946(2)**Born: 27/03/2021****Inbreeding coefficient: 3.4**

Sire: CAEREINION CELTIC STAR PEC1900768(1) by KITROB BANGOR

Dam: PEC1800642(3) by KIMBOLTON VENTURER PPK1400423(E)

EBV	Litter Sz	8 Wk Wgt	Maternal	Scan Wgt	Musc Dpth	Fat Dpth	CT Gigot Musc	Index	Ranking
	0.04	3.11kgs	-0.07kgs	8.26kgs	0.82mm	0.62mm	-1.09mm	273	TOP 1%
Accuracy	60%	67%	67%	76%	74%	77%	61%	76%	

Dam was 123kg as a shearling ewe off grass.

MR TOMOS CHARLES ADAMS**TY-MEDI****ATC****76 TY-MEDI EDWARD ATC2103552(3)****Born: 20/02/2021****Inbreeding coefficient: 4.6**

Sire: BRACKENRIDGE CRUSH NAB1903068(E2) by KINGSPARK BENTLEY

Dam: ATC1400524(2) by COWAL POWERHOUSE CKC09911(E)

EBV	Litter Sz	8 Wk Wgt	Maternal	Scan Wgt	Musc Dpth	Fat Dpth	CT Gigot Musc	Index
	0.10	0.78kgs	0.09kgs	1.86kgs	0.00mm	-0.33mm	-0.19mm	121
Accuracy	64%	46%	46%	50%	49%	50%	23%	47%

77 TY-MEDI EAGLE ATC2103630(2)**Born: 19/03/2021****Inbreeding coefficient: 4.2**

Sire: LOCHAR DAZZLE GHL2002227(E1) by DEVERONVALE AFTERSHOCK

Dam: ATC1802046(1) by WHITEHART YOUNIQUE HWN1602762(2)

EBV	Litter Sz	8 Wk Wgt	Maternal	Scan Wgt	Musc Dpth	Fat Dpth	CT Gigot Musc	Index
	0.08	2.36kgs	0.21kgs	6.22kgs	-0.15mm	-0.15mm	-0.49mm	195
Accuracy	58%	46%	46%	50%	49%	50%	16%	47%

78 TY-MEDI EVEREST ATC2103629(2)**Born: 19/03/2021****Inbreeding coefficient: 4.2**

Sire: LOCHAR DAZZLE GHL2002227(E1) by DEVERONVALE AFTERSHOCK

Dam: ATC1802046(1) by WHITEHART YOUNIQUE HWN1602762(2)

EBV	Litter Sz	8 Wk Wgt	Maternal	Scan Wgt	Musc Dpth	Fat Dpth	CT Gigot Musc	Index
	0.08	2.36kgs	0.21kgs	6.22kgs	-0.15mm	-0.15mm	-0.49mm	195
Accuracy	58%	46%	46%	50%	49%	50%	16%	47%

79 **TY-MEDI ELITE** **ATC2103551(1)** **Born: 18/02/2021**
Inbreeding coefficient: 6.3

Sire: BRACKENRIDGE CRUSH NAB1903068(E2) by KINGSPARK BENTLEY
Dam: ATC1801961(2) by ALWENT WATERLOO NTA1501111(E)

EBV	Litter Sz	8 Wk Wgt	Maternal	Scan Wgt	Musc Dpth	Fat Dpth	CT Gigot Musc	Index
	0.02	1.77kgs	-0.01kgs	4.22kgs	0.05mm	0.07mm	0.03mm	188
Accuracy	62%	43%	43%	48%	47%	47%	21%	45%

MISS N HARTWRIGHT **WHITEHART** **HWN**

80 **WHITEHART EAGLE EYE** **HWN2105472(2)** **Born: 22/02/2021**

Sire: HUMESTON RIVER DANCE GIH1000033(1) by NEWHILL PRESIDENT
Dam: HWN1804161(3) by WHITEHART YEOMAN HWN1602790(2)

81 **WHITEHART EDITION** **HWN2105739(3)** **Born: 17/03/2021**
Inbreeding coefficient: 6.1

Sire: ETTRICK DARK KNIGHT GGH2010073(E2) by BRACKENRIDGE COMMANDER
Dam: HWN1703391(3) by KNOCK WILL.I.AM HAK1500870(E)

82 **WHITEHART ENVY** **HWN2105667(2)** **Born: 03/03/2021**
Inbreeding coefficient: 4.3

Sire: LOOSEBEARE CHOPPER QEL1909929(3) by KIMBOLTON ARROW
Dam: HWN1603047(2) by CANLEFAES VANTASTIC DWC1400708(1)

83 **WHITEHART EWE AND ME** **HWN2105526(2)** **Born: 02/03/2021**
Inbreeding coefficient: 8.0

Sire: BROOMKNOWES LION KING GWB05110(2) by HADDO JORDAN
Dam: HWN1502299(2) by MILNBANK VORDERMAN LYM1401217(E)

84 **WHITEHART EASY TIGER** **HWN2105636(3)** **Born: 08/03/2021**
Inbreeding coefficient: 5.3

Sire: EMPIRE CHURCHILL WPU1919746(1) by BLACKADDER WELL HUNG
Dam: HWN1904526(2) by BLACKADDER WEAVER HNQ1501047(1)

NICK HULSE **ASPLEY** **HNJ**

85 **ASPLEY EDITOR** **HNJ2100354(E1)** **Born: 15/02/2021**
Inbreeding coefficient: 7.0

Sire: AULHOUSEBURN CRACKPOT BYZ1922909(E1) by RHAEADR BEST OF THE BEST
Dam: HNJ1900211(E1) by CLINTERTY YUGA KHAN BBY1601056(E)

ROBERT BENNETT **PLASUCHA** **BFE**

86 **PLASUCHA EYE CANDY** **BFE2111127(E1)** **Born: 14/03/2021**
Inbreeding coefficient: 7.3

Sire: AULHOUSEBURN DASH OF CLASS BYZ2025892(E1) by AULHOUSEBURN CORKY
Dam: BFE2010073(E1) by PLASUCHA CORKER BFE1909304(E1)

EBV	Litter Sz	8 Wk Wgt	Maternal	Scan Wgt	Musc Dpth	Fat Dpth	CT Gigot Musc	Index
	0.05	3.08kgs	-0.02kgs	7.72kgs	-0.77mm	-0.58mm	0.09mm	195
Accuracy	39%	63%	63%	74%	72%	74%	13%	68%

Dam 7th prize gimmer GYAS. GDam 5th prize gimmer RWAS. A line with outstanding power, size & shape

87 **PLASUCHA EVERGREEN DREAM** **BFE2111005(E1)** **Born: 07/05/2021**
Inbreeding coefficient: 7.6

Sire: AULHOUSEBURN DASH OF CLASS BYZ2025892(E1) by AULHOUSEBURN CORKY
Dam: BFE1909214(E1) by TEIGLUM BRAVEHEART CFT1805750(E1)

EBV	Litter Sz	8 Wk Wgt	Maternal	Scan Wgt	Musc Dpth	Fat Dpth	CT Gigot Musc	Index
	0.09	2.15kgs	0.03kgs	5.05kgs	0.12mm	-0.16mm	-0.21mm	174
Accuracy	51%	58%	58%	63%	62%	63%	12%	60%

Dam a massive Braveheart daughter.

88	PLASUCHA EL DORADO	BFE2111150(E1)	Born: 14/03/2021						
			Inbreeding coefficient: 6.9						
	Sire: AULHOUSEBURN DASH OF CLASS BYZ2025892(E1) by AULHOUSEBURN CORKY								
	Dam: BBY1601065(E) by TOPHILL WALL ST HPH1500816(E)								
	Dam ET sister to 52k Yogi Bear								
	EBV	Litter Sz	8 Wk Wgt	Maternal	Scan Wgt	Musc Dpth	Fat Dpth	CT Gigot Musc	Index
		0.05	1.90kgs	-0.14kgs	5.11kgs	-0.38mm	0.02mm	0.19mm	165
	Accuracy	54%	68%	68%	77%	75%	77%	21%	72%
	Dam ET sister to 52k Yogi Bear								
89	PLASUCHA EMERDALE	BFE2111136(E1)	Born: 13/03/2021						
			Inbreeding coefficient: 7.5						
	Sire: PLASUCHA DARK KNIGHT BFE2010100(E1) by MILLHOUSE CYCLONE								
	Dam: BFE1909082(1) by SPORTSMANS A STAR BGS1702642(E)								
	EBV	Litter Sz	8 Wk Wgt	Maternal	Scan Wgt	Musc Dpth	Fat Dpth	CT Gigot Musc	Index
		0.11	2.47kgs	0.04kgs	6.28kgs	-0.92mm	-0.36mm	-0.26mm	170
	Accuracy	45%	39%	39%	42%	38%	39%	14%	40%
	Gdam 20k AHB ewe								
	NICK LEGGE		THORNBURY		LEN				
90	THORNBURY EXPRESS	LEN2101229(E1)	Born: 17/02/2021						
			Inbreeding coefficient: 6.6						
	Sire: USK VALE CHAMPAGNE CHARLIE UVP1903601(E1) by HEXEL BORN TO BE WILD								
	Dam: ENM1701803(2) by CLINTERTY YUGA KHAN BBY1601056(E)								
91	THORNBURY EVEREST	LEN2101232(E1)	Born: 17/02/2021						
			Inbreeding coefficient: 6.6						
	Sire: USK VALE CHAMPAGNE CHARLIE UVP1903601(E1) by HEXEL BORN TO BE WILD								
	Dam: ENM1701803(2) by CLINTERTY YUGA KHAN BBY1601056(E)								
	MASTER GEORGE WILLIAMS		BROADSTONE		WGV				
92	BROADSTONE EXPLORER	WGV2107241(2)	Born: 08/02/2021						
			Inbreeding coefficient: 4.0						
	Sire: CLAYBURY COMMANDER DHL1901492(E1) by WILODGE BRAVO								
	Dam: WGV1905309(2) by DOONGUILE YOSEMITE FDC1601311(2)								
	MESSRS J F ROBINSON & SONS		PREENBANK		RJP				
93	PREENBANK ELWYN	RJP2103636(2)	Born: 28/03/2021						
			Inbreeding coefficient: 4.1						
	Sire: CAMBWELL DISTINCTIVE LTC2005234(E1) by CAMBWELL BELTER								
	Dam: RJP1602027(2) by TALCOED WILDFIRE HQT1501111(E)								
94	PREENBANK ERIC	RJP2103628(2)	Born: 27/03/2021						
			Inbreeding coefficient: 4.2						
	Sire: ROXBURGH COLOSSUS EJ1904375(1) by HADDO BALVENIE								
	Dam: RJP1903284(2) by CAMBWELL YARIS LTC1602802(3)								
95	PREENBANK EVAN	RJP2103579(1)	Born: 21/03/2021						
			Inbreeding coefficient: 6.2						
	Sire: PREENBANK CAPTAIN CARCASS RJP1903249(2) by CHARBEN BARE BACK								
	Dam: RJP1401267(3) by LYONSHALL KING OF CLUBS LAY04046(0)								
96	PREENBANK ENSO	RJP2103541(3)	Born: 17/03/2021						
			Inbreeding coefficient: 4.9						
	Sire: ARKLE BATMAN WGA1805025(1) by HALBEATH VIP								
	Dam: RJP1702458(2) by CAMBWELL YARIS LTC1602802(3)								
97	PREENBANK EMYR	RJP2103551(3)	Born: 19/03/2021						
			Inbreeding coefficient: 3.7						
	Sire: CAMBWELL DISTINCTIVE LTC2005234(E1) by CAMBWELL BELTER								
	Dam: RJP1702507(2) by LOOSEBEARE VISCOUNT II QEL1404369(2)								

MR RYAN BROWN		FAIRVIEW	FVR
98	FAIRVIEW ECHO	FVR2102732(2)	Born: 10/03/2021 Inbreeding coefficient: 4.3
	Sire: PEACEHAY BODY BUILDER CFP1801940(1) by CLARKS WIZARD Dam: GEB1901306(2) by CAMBWELL WORLD CLASS LTC1502362(2)		
A E WILLIAMS & SON		CLUN	WSF
99	CLUN ELGAR	WSF2111757(1)	Born: 06/03/2021 Inbreeding coefficient: 4.1
	Sire: MAERDY APOLLO EDO1701548(2) by LOOSEBEARE WARLORD I Dam: WSF1808308(2) by CRAIG DOUGLAS YA BELTER XSR1610844(E)		
100	CLUN EINSTEIN	WSF2111732(2)	Born: 05/03/2021 Inbreeding coefficient: 5.0
	Sire: CLUN ATHLETE WSF1706432(2) by BLORE VIEW WINGER Dam: WSF1605280(2) by GLENSIDE URI I FPG1300670(1)		
STELFOX FARMS LIMITED		STELFOX	WES
101	STELFOX ENDEAVOUR	WES2103756(2)	Born: 14/02/2021 Inbreeding coefficient: 3.6
	Sire: CLUN ANDERSON WSF1706815(1) by TATHAM HALL UR THE ONE Dam: WES1501139(2) by PEACEHAY UNBELEIVABLE CFP1300801(2)		
102	STELFOX EVAN	WES2103765(2)	Born: 18/02/2021 Inbreeding coefficient: 3.8
	Sire: CLUN ANDERSON WSF1706815(1) by TATHAM HALL UR THE ONE Dam: WES1601556(1) by FORKINS VINCENT GAF1401164(E)		
103	STELFOX ERNIE	WES2103819(2)	Born: 07/03/2021 Inbreeding coefficient: 3.8
	Sire: CLUN ANDERSON WSF1706815(1) by TATHAM HALL UR THE ONE Dam: WES1501142(2) by PEACEHAY UNBELEIVABLE CFP1300801(2)		

Ram Lambs

M & C PARRY

GLEISION

PMG

104 GLEISION FERNANDO

PMG2201595(E1)

Born: 16/02/2022

Inbreeding coefficient: 7.0

Sire: DASHWELL BLACK EYE RYO1801867(E1) by STRATHBOGIE YOLO

Dam: BGS1702658(E) by CLINTERTY YOGI BEAR BBY1601064(E)

EBV	Litter Sz	8 Wk Wgt	Maternal	Scan Wgt	Musc Dpth	Fat Dpth	CT Gigot Musc	Index
	0.00	0.65kgs	-0.43kgs	1.47kgs	-1.59mm	-0.28mm	0.24mm	73
Accuracy	61%	57%	57%	62%	60%	61%	14%	59%

TOM MORGAN

MORWOOD

QMQ

105 MORWOOD FLASHBACK

QMQ2202677(E1)

Born: 13/02/2022

Inbreeding coefficient: 8.4

Sire: HAYMOUNT EYE OF THE BEHOLDER AWJ2102555(E2) by SPORTSMANS DIRTY HARRY

Dam: BGS1803086(E1) by FORDAFOURIE AMALERT LAF1700467(E)

Dam is maternal sister to Sportsmans A Star

106 MORWOOD FLANAGAN

QMQ2202673(E2)

Born: 12/02/2022

Inbreeding coefficient: 6.8

Sire: CASTLECAIRN DOODLEBUG RNA2001134(E1) by HAYMOUNT CRACKERJACK

Dam: QMQ2002465(E1) by PROCTERS CASINO ROYALE PFD1903201(E1)

Grand Dam bred gimmers to 10k

MYFYR ALED EVANS

RHAEADR

ENM

107 RHAEADR FIRST REFUSAL

ENM2202582(E2)

Born: 02/02/2022

Inbreeding coefficient: 12.3

Sire: SPORTSMANS DARE DEVIL BGS2004557(E2) by GARNGOUR CRAFTSMAN

Dam: ENM2002436(E1) by BRACKENRIDGE CROWN ROYAL NAB1903066(E2)

Twin reared. Dam sold for 4800gns. GDam sold as ewe lamb for 7.5k

108 RHAEADR FEARLESS

ENM2202585(E2)

Born: 03/02/2022

Inbreeding coefficient: 8.3

Sire: SPORTSMANS DARE DEVIL BGS2004557(E2) by GARNGOUR CRAFTSMAN

Dam: ENM2002375(E1) by BRACKENRIDGE CROWN ROYAL NAB1903066(E2)

Twin reared. Dam sold for 2.5k. GDam bred 125k Best Of The Best

109 RHAEADR FLANKER

ENM2202607(E1)

Born: 04/02/2022

Inbreeding coefficient: 9.4

Sire: SPORTSMANS DARE DEVIL BGS2004557(E2) by GARNGOUR CRAFTSMAN

Dam: ENM1802019(E1) by KELSO PAVAROTTI MBZ09002(0)

Maternal brother to Worcester Champion 2021.

VAUGHAN FARMS LTD

KINGSPARK

VFK

110 KINGSPARK FABIO

VFK2202163(E1)

Born: 18/02/2022

Inbreeding coefficient: 8.5

Sire: USK VALE EDDIE UVP2104880(E1) by TEIGLUM CINNAMON

Dam: VFK2001688(E1) by GARNGOUR CRAFTSMAN CJN1906202(E1)

Dam full sister to 8K Dynamite, Top family

111 KINGSPARK FERNANDO

VFK2202208(E2)

Born: 20/02/2022

Inbreeding coefficient: 7.0

Sire: USK VALE EDDIE UVP2104880(E1) by TEIGLUM CINNAMON

Dam: BFE2010194(E1) by PLASUCHA CORKER BFE1909304(E1)

Dam purchased for 8K

112 KINGSPARK FORD

VFK2202134(E1)

Born: 18/02/2022

Inbreeding coefficient: 7.2

Sire: USK VALE EDDIE UVP2104880(E1) by TEIGLUM CINNAMON

Dam: VFK2001747(E2) by PLASUCHA ALL STAR BFE1707062(E)

Lost Mother at 38 days old

113 KINGS PARK FALLON**VFK2202159(E1)****Born: 18/03/2022****Inbreeding coefficient: 7.7**

Sire: CASTLECAIRN DOODLEBUG RNA2001134(E1) by HAYMOUNT CRACKERJACK

Dam: VFK1901586(E1) by PLASUCHA ALL STAR BFE1707062(E)

MR GORDON GRAY**ETTRICK****GGH****114 ETTRICK FRANK THE TANK****GGH2214323(E1)****Born: 04/02/2022****Inbreeding coefficient: 6.1**

Sire: CLAYBURY DUNKIRK DHL2001651(E2) by STRATHBOGIE CANNONBALL

Dam: GGH1909023(E2) by MIDCOMBE BRIGADIER MOE1800266(E1)

EBV	Litter Sz	8 Wk Wgt	Maternal	Scan Wgt	Musc Dpth	Fat Dpth	CT Gigot Musc	Index	Ranking
	0.17	4.14kgs	0.30kgs	10.47kgs	0.22mm	-1.27mm	0.81mm	265	TOP 5%
Accuracy	54%	71%	71%	79%	77%	78%	41%	74%	

5th ram RHAS. ET brother to 17k Everest. dam sold for 7k ARR/ARR

115 ETTRICK FRANKIE**GGH2214295(E2)****Born: 04/03/2022****Inbreeding coefficient: 8.4**

Sire: NEW VIEW ELECTRIFYING TWF2101086(E1) by SPORTSMANS DOUBLE DIAMOND

Dam: GGH1909023(E2) by MIDCOMBE BRIGADIER MOE1800266(E1)

EBV	Litter Sz	8 Wk Wgt	Maternal	Scan Wgt	Musc Dpth	Fat Dpth	CT Gigot Musc	Index	Ranking
	0.09	3.43kgs	0.31kgs	8.17kgs	-0.02mm	-0.75mm	0.74mm	216	TOP 25%
Accuracy	49%	70%	70%	78%	77%	78%	26%	74%	

Maternal brother to 17k Everest and lot 1. ARR/ARR

116 ETTRICK FANCY PANTS**GGH2214216(E2)****Born: 12/02/2022****Inbreeding coefficient: 8.4**

Sire: NEW VIEW ELECTRIFYING TWF2101086(E1) by SPORTSMANS DOUBLE DIAMOND

Dam: GGH1909038(E2) by MIDCOMBE BRIGADIER MOE1800266(E1)

EBV	Litter Sz	8 Wk Wgt	Maternal	Scan Wgt	Musc Dpth	Fat Dpth	CT Gigot Musc	Index	Ranking
	0.12	3.41kgs	0.41kgs	8.08kgs	0.46mm	-0.66mm	0.44mm	228	TOP 10%
Accuracy	49%	70%	70%	78%	76%	78%	20%	73%	

Dam is ET sister to dam of 17k Everest. Same family as 7500 7200 6800 Kelso rams. ARR/ARR

117 ETTRICK FULL THROTTLE**GGH2214410(E2)****Born: 01/02/2022****Inbreeding coefficient: 6.3**

Sire: CLINTERTY YUGA KHAN BBY1601056(E) by TOPHILL WALL ST

Dam: PFD1701566(1) by TEIGLUM YOUNGGUN CFT1604569(E)

EBV	Litter Sz	8 Wk Wgt	Maternal	Scan Wgt	Musc Dpth	Fat Dpth	CT Gigot Musc	Index
	0.07	2.78kgs	0.33kgs	7.50kgs	-1.59mm	-0.80mm	0.66mm	165
Accuracy	64%	70%	70%	78%	76%	78%	38%	73%

Dam purchased for 10k maternal sister sold for 8k. dam is Gdam of our best Kelso shearing. ARR/ARR

MATTHEW ELLIS**CRESSAGE****EMK****118 CRESSAGE FIGHTER****EMK2204350(E1)****Born: 23/02/2022****Inbreeding coefficient: 5.8**

Sire: SPORTSMANS BATMAN BGS1803201(E1) by GARNGOUR ALABAMA

Dam: EMK1702959(E) by SCHOLARS YSL YWM1600536(E)

EBV	Litter Sz	8 Wk Wgt	Maternal	Scan Wgt	Musc Dpth	Fat Dpth	CT Gigot Musc	Index	Ranking
	0.06	2.09kgs	-0.94kgs	5.38kgs	0.59mm	-0.53mm	0.31mm	204	TOP 25%
Accuracy	67%	63%	63%	65%	64%	64%	23%	63%	

Mr JAMES RUGGERI**GYRHOS****RUJ****119 GYRHOS FERRARI****RUJ2202017(E1)****Born: 15/02/2022****Inbreeding coefficient: 8.2**

Sire: DASHWELL BLACK EYE RYO1801867(E1) by STRATHBOGIE YOLO

Dam: RUJ2001605(E1) by STRATHBOGIE UNTOUCHABLE US1300280(E)

EBV	Litter Sz	8 Wk Wgt	Maternal	Scan Wgt	Musc Dpth	Fat Dpth	CT Gigot Musc	Index
	0.03	1.79kgs	-0.07kgs	3.78kgs	-1.25mm	-0.68mm	-0.29mm	114
Accuracy	61%	52%	52%	57%	55%	56%	15%	54%

120 GYRHOS FERDINAND**RUJ2202015(E1)****Born: 18/02/2022****Inbreeding coefficient: 8.2**

Sire: DASHWELL BLACK EYE RYO1801867(E1) by STRATHBOGIE YOLO

Dam: RUJ2001605(E1) by STRATHBOGIE UNTOUCHABLE US1300280(E)

EBV	Litter Sz	8 Wk Wgt	Maternal	Scan Wgt	Musc Dpth	Fat Dpth	CT Gigot Musc	Index
	0.03	1.79kgs	-0.07kgs	3.78kgs	-1.25mm	-0.68mm	-0.29mm	114
Accuracy	61%	52%	52%	57%	55%	56%	15%	54%

MR ALAN POWELL**MONNOW HILL****XPA****121 MONNOW HILL FUEL THE FIRE****XPA2200136(E1)****Born: 17/02/2022****Inbreeding coefficient: 9.3**

Sire: CRESSAGE ENFORCER EMK2104231(E1) by MELLOR VALE DAKOTA

Dam: BFE2010104(E1) by PLASUCHA ALL STAR BFE1707062(E)

Sired by the 38,000gns Cressage Enforcer. Dam is Female Champion 2021 bought for 6000gns

122 MONNOW HILL FAIR AND SQUARE**XPA2200147(E1)****Born: 17/02/2022****Inbreeding coefficient: 7.4**

Sire: CRESSAGE ENFORCER EMK2104231(E1) by MELLOR VALE DAKOTA

Dam: HAK2001532(E2) by SPORTSMANS CHIEFTAIN BGS1903722(E1)

Sired by the 38,000gns Cressage Enforcer. Dam was bought privately for 6000gns

BODEN & DAVIES LTD**SPORTSMANS****BGS****123 SPORTSMANS FERGIE****BGS2205969(E1)****Born: 15/02/2022****Inbreeding coefficient: 10.0**

Sire: PROCTERS EL PRESIDENTE PFD2104681(E1) by SPORTSMANS DOUBLE DIAMOND

Dam: BYZ1820801(E2) by SPORTSMANS A STAR BGS1702642(E)

EBV	Litter Sz	8 Wk Wgt	Maternal	Scan Wgt	Musc Dpth	Fat Dpth	CT Gigot Musc	Index
	0.06	1.24kgs	-0.05kgs	2.80kgs	0.52mm	0.35mm	-0.21mm	158
Accuracy	46%	69%	69%	78%	76%	78%	14%	73%

Dam purchased for 14,000gns at Carlisle 2019

124 SPORTSMANS FERDINAND**BGS2205999(E1)****Born: 15/02/2022****Inbreeding coefficient: 9.6**

Sire: SEAFORDE EMPIRE KING PRQ2101840(E1) by SPORTSMANS CANNON BALL

Dam: BGS2105097(E1) by CASTLECAIRN DOODLEBUG RNA2001134(E1)

EBV	Litter Sz	8 Wk Wgt	Maternal	Scan Wgt	Musc Dpth	Fat Dpth	CT Gigot Musc	Index	Ranking
	0.13	3.76kgs	-0.08kgs	9.85kgs	0.21mm	-0.91mm	-0.24mm	252	TOP 5%
Accuracy	39%	65%	65%	75%	73%	75%	15%	69%	

Dam from the same lines as Sportsmans A Star, a good breeding Family

125 SPORTSMANS FEGAN**BGS2205961(E1)****Born: 14/02/2022****Inbreeding coefficient: 10.0**

Sire: PROCTERS EL PRESIDENTE PFD2104681(E1) by SPORTSMANS DOUBLE DIAMOND

Dam: BYZ1820801(E2) by SPORTSMANS A STAR BGS1702642(E)

EBV	Litter Sz	8 Wk Wgt	Maternal	Scan Wgt	Musc Dpth	Fat Dpth	CT Gigot Musc	Index
	0.06	1.22kgs	-0.05kgs	2.74kgs	0.17mm	-0.38mm	-0.21mm	132
Accuracy	46%	69%	69%	78%	76%	78%	14%	73%

126 SPORTSMANS FACEBOOK**BGS2206102(E1)****Born: 18/02/2022****Inbreeding coefficient: 7.7**

Sire: PROCTERS EL PRESIDENTE PFD2104681(E1) by SPORTSMANS DOUBLE DIAMOND

Dam: WWB1901370(E1) by AULHOUSEBURN BLACK MAGIC BYZ1820735(E1)

EBV	Litter Sz	8 Wk Wgt	Maternal	Scan Wgt	Musc Dpth	Fat Dpth	CT Gigot Musc	Index
	0.06	2.28kgs	-0.08kgs	5.58kgs	-0.05mm	-0.48mm	-0.16mm	177
Accuracy	44%	66%	66%	76%	74%	76%	9%	70%

Dam purchased at Lanark 2020

127 SPORTSMANS FRANKIE**BGS2206043(E1)****Born: 16/02/2022****Inbreeding coefficient: 6.7**

Sire: PROCTERS EL PRESIDENTE PFD2104681(E1) by SPORTSMANS DOUBLE DIAMOND

Dam: PUG1901067(E2) by EDEN VALLEY WIZ KID WEV1500437(2)

EBV	Litter Sz	8 Wk Wgt	Maternal	Scan Wgt	Musc Dpth	Fat Dpth	CT Gigot Musc	Index
	0.02	1.98kgs	-0.32kgs	4.70kgs	0.51mm	-0.03mm	0.32mm	195
Accuracy	43%	67%	67%	77%	75%	77%	14%	71%

Dam purchased for 18,000gns

128 SPORTSMANS FLOYD**BGS2206053(E1)****Born: 17/02/2022****Inbreeding coefficient: 7.7**

Sire: PROCTERS EL PRESIDENTE PFD2104681(E1) by SPORTSMANS DOUBLE DIAMOND

Dam: WWB1901370(E1) by AULHOUSEBURN BLACK MAGIC BYZ1820735(E1)

EBV	Litter Sz	8 Wk Wgt	Maternal	Scan Wgt	Musc Dpth	Fat Dpth	CT Gigot Musc	Index	Ranking
	0.06	3.55kgs	-0.08kgs	8.97kgs	-0.78mm	-0.95mm	-0.16mm	208	TOP 25%
Accuracy	44%	66%	66%	76%	74%	76%	9%	70%	

129 SPORTSMANS FENTON**BGS2205887(E1)****Born: 07/02/2022****Inbreeding coefficient: 7.5**

Sire: SEAFORDE EMPIRE KING PRQ2101840(E1) by SPORTSMANS CANNON BALL

Dam: BGS1903669(E1) by PLASUCHA BIG GUN BFE1808110(E1)

EBV	Litter Sz	8 Wk Wgt	Maternal	Scan Wgt	Musc Dpth	Fat Dpth	CT Gigot Musc	Index
	0.12	2.22kgs	-0.08kgs	5.42kgs	-0.21mm	-0.50mm	0.06mm	171
Accuracy	43%	68%	68%	77%	75%	77%	14%	72%

130 SPORTSMANS FREDDIE**BGS2206001(E1)****Born: 16/02/2022****Inbreeding coefficient: 14.5**

Sire: PROCTERS EL PRESIDENTE PFD2104681(E1) by SPORTSMANS DOUBLE DIAMOND

Dam: BGS2004572(E1) by GARNGOUR CRAFTSMAN CJN1906202(E1)

EBV	Litter Sz	8 Wk Wgt	Maternal	Scan Wgt	Musc Dpth	Fat Dpth	CT Gigot Musc	Index	Ranking
	0.05	3.43kgs	-0.23kgs	8.39kgs	-0.20mm	-0.51mm	-0.30mm	222	TOP 25%
Accuracy	41%	57%	57%	61%	61%	61%	13%	59%	

JAMES THEYER**CLANFIELD****THE****131 CLANFIELD FANTASTIC****THE2200961(E1)****Born: 19/02/2022****Inbreeding coefficient: 7.2**

Sire: AULHOUSEBURN EXPRESSION BYZ2129120(E1) by SPORTSMANS DOUBLE DIAMOND

Dam: MZH1800335(E2) by PLASUCHA ALL STAR BFE1707062(E)

EBV	Litter Sz	8 Wk Wgt	Maternal	Scan Wgt	Musc Dpth	Fat Dpth	CT Gigot Musc	Index	Ranking
	0.04	3.57kgs	-0.18kgs	9.09kgs	-1.05mm	-0.86mm	1.15mm	220	TOP 25%
Accuracy	50%	70%	70%	78%	77%	78%	16%	74%	

Sire 100k Lanark topper last year. 961 full sister reserve female champ national show and 3rd GYS

132 CLANFIELD FASTRAC**THE2201033(E1)****Born: 24/02/2022****Inbreeding coefficient: 7.4**

Sire: AULHOUSEBURN EXPRESSION BYZ2129120(E1) by SPORTSMANS DOUBLE DIAMOND

Dam: HAK1901389(E1) by KNOCK BANKER HAK1801281(E1)

EBV	Litter Sz	8 Wk Wgt	Maternal	Scan Wgt	Musc Dpth	Fat Dpth	CT Gigot Musc	Index	Ranking
	0.12	3.46kgs	-0.05kgs	8.76kgs	0.40mm	-1.15mm	-0.05mm	230	TOP 10%
Accuracy	42%	69%	69%	77%	76%	77%	12%	72%	

Dam is the much admired 10k Knock gimmer who has bred tremendous in her first year.

133 CLANFIELD FRONT RUNNER**THE2201047(E1)****Born: 24/02/2022****Inbreeding coefficient: 13.1**

Sire: AULHOUSEBURN EXPRESSION BYZ2129120(E1) by SPORTSMANS DOUBLE DIAMOND

Dam: BYZ1922937(E1) by SPORTSMANS A STAR BGS1702642(E)

EBV	Litter Sz	8 Wk Wgt	Maternal	Scan Wgt	Musc Dpth	Fat Dpth	CT Gigot Musc	Index	Ranking
	0.08	4.22kgs	-0.12kgs	10.64kgs	-2.36mm	-0.35mm	-0.53mm	203	TOP 25%
Accuracy	42%	69%	69%	77%	75%	77%	13%	72%	

Sire bred champion group of 3 Royal 3 Counties Show. Dam 12k gimmer goes back to CKC10

NICK LEGGE				THORNBURY				LEN			
134	THORNBURY FURY			LEN2201335(E1)				Born: 15/02/2022			
								Inbreeding coefficient: 7.9			
Sire: AULHOUSEBURN ESPRIT BYZ2129122(E1) by SPORTSMANS DOUBLE DIAMOND											
Dam: LEN1900848(E1) by TAMNAMONEY BULLSEYE SRY1801829(E2)											
135	THORNBURY FLAME THROWER			LEN2201364(E1)				Born: 15/02/2022			
								Inbreeding coefficient: 7.9			
Sire: AULHOUSEBURN ESPRIT BYZ2129122(E1) by SPORTSMANS DOUBLE DIAMOND											
Dam: LEN1900848(E1) by TAMNAMONEY BULLSEYE SRY1801829(E2)											
136	THORNBURY FIRE STARTER			LEN2201376(E1)				Born: 14/02/2022			
								Inbreeding coefficient: 7.4			
Sire: RHAEADR DRUM MAJOR ENM2002360(E2) by TEIGLUM YOUNGGUN											
Dam: LEN1900836(E1) by STRATHBOGIE YA BELTER IJS1600653(E)											
R E J PIERCE				OLDFORD				PRE			
137	OLDFORD FRISKY			PRE2201527(E1)				Born: 02/03/2022			
								Inbreeding coefficient: 9.6			
Sire: MELLOR VALE DAKOTA BCM2000850(E1) by GARNGOUR CRAFTSMAN											
Dam: PRE1901240(E1) by GARNGOUR ALABAMA CJN1704960(E)											
EBV	Litter Sz	8 Wk Wgt	Maternal	Scan Wgt	Musc Dpth	Fat Dpth	CT Gigot Musc	Index	Ranking		
	0.09	3.63kgs	-0.26kgs	9.48kgs	0.11mm	-0.39mm	-0.24mm	256	TOP 5%		
Accuracy	43%	69%	69%	77%	75%	76%	23%	72%			
138	OLDFORD FIRE STARTER			PRE2201501(E2)				Born: 03/03/2022			
								Inbreeding coefficient: 10.0			
Sire: MELLOR VALE DAKOTA BCM2000850(E1) by GARNGOUR CRAFTSMAN											
Dam: PRE2001273(E1) by SPORTSMANS A STAR BGS1702642(E)											
EBV	Litter Sz	8 Wk Wgt	Maternal	Scan Wgt	Musc Dpth	Fat Dpth	CT Gigot Musc	Index	Ranking		
	0.07	3.22kgs	-0.22kgs	8.08kgs	1.09mm	0.29mm	-0.31mm	261	TOP 5%		
Accuracy	44%	68%	68%	76%	74%	76%	14%	71%			
DAVID GRAY				TIMA				GCT			
139	TIMA FRISKY			GCT2214551(E3)				Born: 15/02/2022			
								Inbreeding coefficient: 6.7			
Sire: NEW VIEW ELECTRIFYING TWF2101086(E1) by SPORTSMANS DOUBLE DIAMOND											
Dam: GCT1808287(3) by CLINTERTY YUGA KHAN BBY1601056(E)											
EBV	Litter Sz	8 Wk Wgt	Maternal	Scan Wgt	Musc Dpth	Fat Dpth	CT Gigot Musc	Index	Ranking		
	0.13	2.34kgs	-0.04kgs	5.80kgs	0.55mm	-0.64mm	0.40mm	206	TOP 25%		
Accuracy	49%	70%	70%	78%	77%	78%	22%	74%			
5th ram lamb GYS. ET brother to 1st GYS 2nd RHAS lambs. C.Rebel and C.Bob family. ARR/ARR											
LOWRI JONES				CARN				JLX			
140	CARN FRANKY			JLX2204270(E1)				Born: 26/02/2022			
								Inbreeding coefficient: 8.8			
Sire: SPORTSMANS A STAR BGS1702642(E) by TEIGLUM YOUNGGUN											
Dam: XMM1917459(E2) by GARNGOUR BULLET CJN1805515(E2)											
NICK HULSE				ASPLEY				HNJ			
141	ASPLEY FLASH			HNJ2200454(E1)				Born: 14/02/2022			
								Inbreeding coefficient: 10.0			
Sire: TEIGLUM CINNAMON CFT1906357(E2) by KNOCK BANTASTIC											
Dam: VBC2003765(E1) by DRUMBREDDAN CENTRE OF ATTENTION HFI1914965(E1)											
142	ASPLEY FIGO			HNJ2200452(E1)				Born: 11/02/2022			
								Inbreeding coefficient: 10.0			
Sire: TEIGLUM CINNAMON CFT1906357(E2) by KNOCK BANTASTIC											
Dam: VBC2003765(E1) by DRUMBREDDAN CENTRE OF ATTENTION HFI1914965(E1)											

MICHAEL TURNER		OKEHALL	TMO
143	OKEHALL FLOYD	TMO2209286(E2)	Born: 16/02/2022 Inbreeding coefficient: 5.8
Sire: HAYMOUNT EARTH WIND AND FIRE AWJ2102444(E2) by SPORTSMANS DIRTY HARRY Dam: HBN1701525(E) by GLENSIDE WILLIE WINKIE FPG1501071(2) Sire 12k Lanark Last year. Dam 5k Mullan ewe.			
JOSEPH WILLIAMS		OWL VALLEY	WPH
144	OWL VALLEY FIRECRACKER	WPH2204324(1)	Born: 26/02/2022
Sire: TULLYLAGAN TONKA HPY1200404(E) by MELLOR VALE SENATOR Dam: WPH2003164(E2) by GARNGOUR ALABAMA CJN1704960(E)			
145	OWL VALLEY FROSTY	WPH2204313(E1)	Born: 03/03/2022 Inbreeding coefficient: 6.1
Sire: GARNGOUR CRAFTSMAN CJN1906202(E1) by SILVERMERE BALTIC Dam: WPH1802234(E1) by CLINTERTY YOGI BEAR BBY1601064(E)			
BW VERNON		CHARBEN	VBC
146	CHARBEN FOREFRONT	VBC2204896(E1)	Born: 11/02/2022 Inbreeding coefficient: 9.3
Sire: HAYMOUNT EARTH WIND AND FIRE AWJ2102444(E2) by SPORTSMANS DIRTY HARRY Dam: VBC1802969(E1) by GARNGOUR ALABAMA CJN1704960(E) By the 12,000gns Earth Wind and Fire			
ROBERT COCKBURN		KNAP	CKP
147	KNAP F B I	CKP2206604(E2)	Born: 15/02/2022 Inbreeding coefficient: 7.6
Sire: NEW VIEW ELECTRIFYING TWF2101086(E1) by SPORTSMANS DOUBLE DIAMOND Dam: CKP2004684(E1) by SPORTSMANS CANNON BALL BGS1903730(E1) Dam is Texttravaganza champion Daisy Duke, ET brother to 2 of Lanark lambs, maternal sister is best stock gimmer			
148	KNAP FIREWORK	CKP2206569(E1)	Born: 14/02/2022 Inbreeding coefficient: 5.1
Sire: NEW VIEW ELECTRIFYING TWF2101086(E1) by SPORTSMANS DOUBLE DIAMOND Dam: CKP1203249(E) by ETTRICK RAINBOW WARRIOR GGH1000041(0) Dam has bred sons to 5k x3 & daughters to 9k & 7.5k she is 10yrs old & still going strong.			
149	KNAP FREEDOM FIGHTER	CKP2206550(E1)	Born: 15/02/2022 Inbreeding coefficient: 6.4
Sire: NEW VIEW ELECTRIFYING TWF2101086(E1) by SPORTSMANS DOUBLE DIAMOND Dam: CKP1802749(E2) by MULLAN AMIGO HBN1701499(E) Dam bred 8.5k Don Diablo & 2 of this years show gimmers. same family as dam of 26k Seaforde Egyptian Warrior.			
150	KNAP FUNDAMENTAL	CKP2206544(E1)	Born: 15/02/2022 Inbreeding coefficient: 9.1
Sire: LAKEVIEW EARN YOUR KEEP LKV2108203(E1) by CASTLECAIRN DOODLEBUG Dam: CKP1701758(E) by CLINTERTY YUGA KHAN BBY1601056(E) Dam bred daughters to 15k 10k 4.5k 3k 2.5k twice & 2k. same family as one of show gimmers.			
GETHYN DEAKINS		PENTRUSCO	DKI
151	PENTRUSCO FENG SHUI	DKI2200635(E1)	Born: 29/01/2022 Inbreeding coefficient: 6.6
Sire: CHARBEN EL DORADO VBC2104415(E1) by RHAADR BEST OF THE BEST Dam: PRE1500562(E) by TOPHILL UNION JACK HPH1300527(1) Long shapely sire with bags of character purchased privately from Charben. Dam is best ewe in the flock.			

ROBERT EVANS

HOPE VALLEY

152

HOPE VALLEY FALCON

ERH2200666(E1)

Born: 26/02/2022

Inbreeding coefficient: 9.9

Sire: MORWOOD EUROSTAR QMQ2102586(E1) by GARNGOUR DETROIT

Dam: BYZ1820798(E1) by SPORTSMANS A STAR BGS1702642(E)

Dam also bred Hope Valley Drago

153

HOPE VALLEY FRED

ERH2200673(E1)

Born: 04/03/2022

Inbreeding coefficient: 11.6

Sire: MORWOOD EUROSTAR QMQ2102586(E1) by GARNGOUR DETROIT

Dam: GCT1910414(2) by SPORTSMANS BATMAN BGS1803201(E1)

A EUROS JONES

YNYSTODDEB

JNN

154

YNYSTODDEB FLYNNE

JNN2205138(E2)

Born: 25/02/2022

Inbreeding coefficient: 6.5

Sire: SPORTSMANS EINSTEIN BGS2104928(E1) by CASTLECAIRN DOODLEBUG

Dam: JNN2003647(E1) by NEW VIEW CRACKER TWF1900700(E1)

155

YNYSTODDEB FRED

JNN2205185(E1)

Born: 25/02/2022

Inbreeding coefficient: 6.5

Sire: SPORTSMANS EINSTEIN BGS2104928(E1) by CASTLECAIRN DOODLEBUG

Dam: JNN2003647(E1) by NEW VIEW CRACKER TWF1900700(E1)

GEORGE OARE

COACH HOUSE

OAR

156

COACH HOUSE FRED

OAR2203760(E1)

Born: 02/02/2022

Inbreeding coefficient: 8.3

Sire: RHAEADR EMPEROR ENM2102466(E1) by SPORTSMANS DARE DEVIL

Dam: BYZ1820652(E2) by SPORTSMANS A STAR BGS1702642(E)

157

COACH HOUSE FOREST

OAR2203770(E1)

Born: 03/02/2022

Inbreeding coefficient: 8.3

Sire: RHAEADR EMPEROR ENM2102466(E1) by SPORTSMANS DARE DEVIL

Dam: BYZ1820652(E2) by SPORTSMANS A STAR BGS1702642(E)

MR JEREMY THEYER

CHEDWORTH

THX

158

CHEDWORTH FAST AND FURIOUS

THX2200620(E1)

Born: 20/02/2022

Inbreeding coefficient: 6.6

Sire: CLANFIELD ELITE THE2100861(E1) by HOPE VALLEY C THE STARS

Dam: BFE1808083(E1) by MULLAN AWESOME HBN1701494(E)

EBV

Litter Sz

8 Wk Wgt

Maternal

Scan Wgt

Musc Dpth

Fat Dpth

CT Gigot Musc

Index

0.10

2.00kgs

0.00kgs

5.10kgs

0.60mm

-0.93mm

0.54mm

173

Accuracy

53%

68%

68%

77%

75%

77%

17%

72%

Sire purchased at English National 2021, dam is full sister to Plasucha Bossman

159

CHEDWORTH FLIPPING HEC

THX2200619(E1)

Born: 02/03/2022

Inbreeding coefficient: 11.5

Sire: SPORTSMANS DARE DEVIL BGS2004557(E2) by GARNGOUR CRAFTSMAN

Dam: IJS2004742(2) by KNOCK YARDSMAN HAK1601070(E)

EBV

Litter Sz

8 Wk Wgt

Maternal

Scan Wgt

Musc Dpth

Fat Dpth

CT Gigot Musc

Index

Ranking

0.08

2.81kgs

-0.23kgs

7.09kgs

-0.38mm

-0.69mm

-0.37mm

197

TOP 25%

Accuracy

47%

62%

62%

69%

73%

75%

21%

66%

Dam a joint purchase at English National 2021, sire was top priced ram lamb in Carlisle 2020

160

CHEDWORTH FLASHLIGHT

THX2200594(E1)

Born: 18/02/2022

Inbreeding coefficient: 7.0

Sire: CLANFIELD ELITE THE2100861(E1) by HOPE VALLEY C THE STARS

Dam: BFE1707004(E) by KNOCK YANKEE HAK1601045(3)

EBV

Litter Sz

8 Wk Wgt

Maternal

Scan Wgt

Musc Dpth

Fat Dpth

CT Gigot Musc

Index

Ranking

0.15

3.16kgs

0.03kgs

7.99kgs

0.71mm

-0.62mm

1.09mm

239

TOP 10%

Accuracy

54%

69%

69%

77%

75%

77%

21%

72%

Dam is the mother to Plasucha Bossman, sire was purchased at the English National 2021

ROBERT BENNETT

PLASUCHA

BFE

161 PLASUCHA FIELDSMAN

BFE2212119(E1)

Born: 11/02/2022

Inbreeding coefficient: 5.9

Sire: SPORTSMANS EXPRESS BGS2104895(E1) by CASTLECAIRN DOODLEBUG

Dam: BFE1707163(1) by BRACKENRIDGE YOUNG GUN NAB1601733(E)

EBV	Litter Sz	8 Wk Wgt	Maternal	Scan Wgt	Musc Dpth	Fat Dpth	CT Gigot Musc	Index	Ranking
	0.04	3.49kgs	-0.13kgs	8.59kgs	1.05mm	-0.55mm	0.40mm	267	TOP 5%
Accuracy	52%	72%	72%	79%	77%	78%	12%	75%	

Dam our best breeding ewe

162 PLASUCHA FROZEN FIRE

BFE2212133(E1)

Born: 11/02/2022

Inbreeding coefficient: 5.9

Sire: SPORTSMANS EXPRESS BGS2104895(E1) by CASTLECAIRN DOODLEBUG

Dam: BFE1707163(1) by BRACKENRIDGE YOUNG GUN NAB1601733(E)

EBV	Litter Sz	8 Wk Wgt	Maternal	Scan Wgt	Musc Dpth	Fat Dpth	CT Gigot Musc	Index	Ranking
	0.04	3.28kgs	-0.13kgs	8.03kgs	1.13mm	-0.57mm	0.40mm	258	TOP 5%
Accuracy	52%	72%	72%	79%	77%	78%	12%	75%	

ET brother to first lamb

163 PLASUCHA FEARLESS

BFE2212142(E1)

Born: 11/02/2022

Inbreeding coefficient: 7.2

Sire: SPORTSMANS EXPRESS BGS2104895(E1) by CASTLECAIRN DOODLEBUG

Dam: CKC1809806(E1) by PLASUCHA ALL STAR BFE1707062(E)

EBV	Litter Sz	8 Wk Wgt	Maternal	Scan Wgt	Musc Dpth	Fat Dpth	CT Gigot Musc	Index	Ranking
	0.06	3.52kgs	-0.20kgs	8.59kgs	-0.41mm	0.27mm	0.80mm	243	TOP 5%
Accuracy	42%	71%	71%	78%	77%	78%	13%	74%	

Dam a massive Cowal ewe purchased 4.5k

164 PLASUCHA FLOODGATES

BFE2212112(E1)

Born: 10/02/2022

Inbreeding coefficient: 6.6

Sire: SPORTSMANS EXPRESS BGS2104895(E1) by CASTLECAIRN DOODLEBUG

Dam: BFE2010077(E1) by MILLHOUSE CYCLONE HNL1902244(E1)

EBV	Litter Sz	8 Wk Wgt	Maternal	Scan Wgt	Musc Dpth	Fat Dpth	CT Gigot Musc	Index
	0.10	3.12kgs	-0.08kgs	7.73kgs	-0.84mm	-0.80mm	0.24mm	195
Accuracy	46%	64%	64%	74%	72%	72%	10%	68%

Sportsmans Express purchased Lanark 2021 75k

165 PLASUCHA FERDINAND

BFE2212169(E1)

Born: 10/02/2022

Inbreeding coefficient: 6.6

Sire: SPORTSMANS EXPRESS BGS2104895(E1) by CASTLECAIRN DOODLEBUG

Dam: BFE1909214(E1) by TEIGLUM BRAVEHEART CFT1805750(E1)

EBV	Litter Sz	8 Wk Wgt	Maternal	Scan Wgt	Musc Dpth	Fat Dpth	CT Gigot Musc	Index	Ranking
	0.11	2.93kgs	-0.08kgs	6.98kgs	0.57mm	-0.50mm	0.18mm	217	TOP 25%
Accuracy	49%	71%	71%	78%	77%	78%	12%	74%	

Dam a massive Braveheart ewe. 2 ET sisters sold to Lakeview

166 PLASUCHA FILTER

BFE2212147(E1)

Born: 11/02/2022

Inbreeding coefficient: 9.0

Sire: SPORTSMANS EXPRESS BGS2104895(E1) by CASTLECAIRN DOODLEBUG

Dam: BFE2010047(E1) by PLASUCHA BOSS MAN BFE1808061(E1)

EBV	Litter Sz	8 Wk Wgt	Maternal	Scan Wgt	Musc Dpth	Fat Dpth	CT Gigot Musc	Index	Ranking
	0.05	3.44kgs	-0.16kgs	8.36kgs	1.59mm	-0.85mm	0.47mm	264	TOP 5%
Accuracy	41%	69%	69%	77%	76%	77%	12%	72%	

2 ET sister 1st prize at RHAS & RWAS

167 PLASUCHA FIREFLY

BFE2212148(E1)

Born: 11/02/2022

Inbreeding coefficient: 7.2

Sire: SPORTSMANS EXPRESS BGS2104895(E1) by CASTLECAIRN DOODLEBUG

Dam: CKC1809806(E1) by PLASUCHA ALL STAR BFE1707062(E)

EBV	Litter Sz	8 Wk Wgt	Maternal	Scan Wgt	Musc Dpth	Fat Dpth	CT Gigot Musc	Index
	0.06	2.76kgs	-0.20kgs	6.52kgs	-0.81mm	-0.32mm	0.80mm	182
Accuracy	42%	71%	71%	78%	77%	78%	13%	74%

Dam a massive Cowal ewe purchased 4.5k

168 PLASUCHA FRANKEL

BFE2212150(E1)

Born: 10/02/2022

Inbreeding coefficient: 7.8

Sire: TEIGLUM ENTERTAINER CFT2100435(E1) by WYDDEN DING DONG

Dam: LKV2004323(E1) by RHAEADR ACE ENM1701802(2)

EBV	Litter Sz	8 Wk Wgt	Maternal	Scan Wgt	Musc Dpth	Fat Dpth	CT Gigot Musc	Index
	0.11	1.87kgs	-0.07kgs	4.92kgs	-0.05mm	-0.99mm	0.26mm	164
Accuracy	41%	61%	61%	73%	71%	73%	13%	66%

Gdam bred interbreed champion at RUAS 2022.

MESSRS CLAYBURY TEXELS

CLAYBURY

DHL

169 CLAYBURY FORTRESS

DHL2202012(E1)

Born: 22/02/2022

Inbreeding coefficient: 6.9

Sire: CLAYBURY DELTA FORCE DHL2001637(E2) by STRATHBOGIE CANNONBALL

Dam: DHL1701130(1) by COWAL YOUR MY BOY CKC1607584(2)

EBV	Litter Sz	8 Wk Wgt	Maternal	Scan Wgt	Musc Dpth	Fat Dpth	CT Gigot Musc	Index	Ranking
	0.03	1.71kgs	-0.09kgs	4.31kgs	1.39mm	-0.73mm	0.16mm	200	TOP 25%
Accuracy	54%	69%	69%	78%	76%	78%	16%	73%	

170 CLAYBURY FUGITIVE

DHL2202024(E1)

Born: 22/02/2022

Inbreeding coefficient: 9.4

Sire: CLAYBURY DELTA FORCE DHL2001637(E2) by STRATHBOGIE CANNONBALL

Dam: DHL1801309(E1) by STRATHBOGIE YOUI IJS1600756(E)

EBV	Litter Sz	8 Wk Wgt	Maternal	Scan Wgt	Musc Dpth	Fat Dpth	CT Gigot Musc	Index
	0.05	2.71kgs	-0.17kgs	6.61kgs	-0.58mm	-0.92mm	0.20mm	188
Accuracy	52%	69%	69%	77%	75%	77%	25%	72%

171 CLAYBURY FAIRGAME

DHL2202031(E1)

Born: 23/02/2022

Inbreeding coefficient: 6.9

Sire: CLAYBURY DELTA FORCE DHL2001637(E2) by STRATHBOGIE CANNONBALL

Dam: DHL1701130(1) by COWAL YOUR MY BOY CKC1607584(2)

EBV	Litter Sz	8 Wk Wgt	Maternal	Scan Wgt	Musc Dpth	Fat Dpth	CT Gigot Musc	Index
	0.03	1.24kgs	-0.09kgs	3.06kgs	1.04mm	-0.74mm	0.16mm	168
Accuracy	54%	69%	69%	78%	76%	78%	16%	73%

WIN AN EID READER WORTH MORE THAN £950.



Texels continue to dominate the GB sheep industry, accounting for 27.2% of all rams used in the GB national flock, according to the 2020 GB Sheep Breeds Survey.

Moreover, 26% of all ewes in GB were mated to Texel rams and, tellingly, the next nearest breed accounted for less than a third as many rams at just 8.7% of all rams used and was mated to just 8% of the national flock.

The continued dominance of the Texel breed as a sire is a result of the added value Texels brought to their progeny. It is well known that Texel sired lambs are in demand across GB, both as prime lambs and as breeding replacements, with Texel sired lambs earning up to 80p/kg premiums in live markets.

The survey also revealed 2.6% of the national flock to be purebred Texel and 15% of crossbred ewes were found to be Texel sired. Overall, the breed and its crosses represented 12% of all ewes in the GB.



To enter visit www.texel.uk/competition or scan here



Kiwikit **ROXAN**

FREE PRINT OPTIONS

TagFaster
DATAMARS

Rubba
DATAMARS

Z
TAGS
DATAMARS



R Blackburn, Cumbria

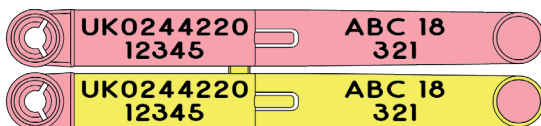
Not sure what print options are beneficial to you? Needing a refresher on compliance?

Give KiwiKit Roxan a call.

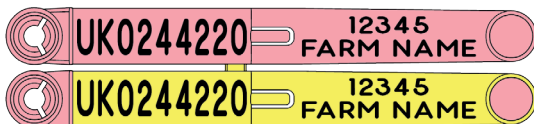


Scan the QR code to speak to your local rep regarding society print options!

EXAMPLE BREED SOCIETY PRINT



EXAMPLE MANAGEMENT PRINT



FOLLOW US:



KiwiKit **ROXAN**