

The Twilight Texel Sale



ARKLE & ELLEN VALLEY GIMMER – Top price 10,000gns Twilight Sale 2017

Friday 30th November 2018

within Borderway Mart, Carlisle, CA1 2RS

Auctioneers



MEGASTART

EWES & LAMB

A feed tub for highly productive ewes to be fed as lambing time approaches



- ✓ Contains a unique MOS, designed to activate the animals immune system and improve colostrum quality.
- ✓ High intake in late pregnancy.
- ✓ Balanced mineral supply.
- ✓ A source of quality protein.
- ✓ Vitamin E incorporated at optimum level to improve lamb survival.
- ✓ Excellent energy source from sugars, starch and protected fat.
- ✓ Vitamin B1 to reduce problems with CCN.
- ✓ Typical daily intakes 100-150g per head per day, feed for last 4-6 weeks pre-lambing.



**SCOTMIN
NUTRITION**

www.scotmin.com
info@scotmin.com

For more information contact your **local merchant** or
Scotmin sales representative



01292 280909

The best **START** in life you can give

PLEASE BRING THIS CATALOGUE TO THE SALE

THE TWILIGHT SALE

95 IN LAMB FEMALES

presenting

ARKLE & ELLENVALLEY FLOCKS (MESSRS G WILKINSON)

8 GIMMERS & 2 RECIPIENTS

EDEN VALLEY FLOCK (R WILSON)

8 GIMMERS & 2 RECIPIENTS

STANTON FLOCK (PK & R WOOF)

9 GIMMERS

DURISDEER FLOCK (R OSBOURNE)

6 GIMMERS

FAR HEY & BRADLEYS FLOCKS (ROBERT & RYAN BRADLEY)

7 GIMMERS

LLANGWM FLOCK (IOLO PRYS JONES)

5 GIMMERS & 2 RECIPIENTS

DOUGANHILL FLOCK (DOUGANHILL FARMS)

10 GIMMERS

HALBEATH FLOCK (ROBIN & CAROLINE ORR)

10 GIMMERS

CRAILLOCH FLOCK (A MCCOLM)

9 GIMMERS

PLASUCHA FLOCK (R BENNETT)

10 GIMMERS

WELSH FLOCK (SELWYN & TOMOS EVANS)

6 EWE LAMBS & 1 RECIPIENT

FRIDAY 30th NOVEMBER 2018

Sale to commence at 6.00pm

to be held at Borderway Mart, Rosehill, Carlisle
(adjacent to J43 M6 Motorway)



Auctioneers

HARRISON & HETHERINGTON

Farmstock Auctioneers, Brokers & Valuers

Head Office: Borderway Mart Rosehill Carlisle CA1 2RS

Telephone: 01228 406230 – Fax: 01228 406231

E-mail: info@borderway.com Website: www.harrisonandhetherington.co.uk

IMPORTANT NOTICE TO PROSPECTIVE PURCHASERS

SETTLEMENT & CLEARANCE OF STOCK

Please note that all lots must be settled
on the day of purchase

Completion of a buyers slip is essential for parties
who have not dealt with the company before

New customers and agents wishing to purchase on behalf
of another party must contact the companys main office
48 hours prior to a sale

No Lots can leave the market without a
'pass slip' being issued by the main office

Purchasers From Outside The United Kingdom

Invoices will be raised in pounds sterling.

We request that payment is made to us in pounds sterling by
cheque/bankers draft on the day of sale.

Debit cards and business credit cards only accepted.

(2% surcharge on business credit cards)

**If you pay with a credit card, it must be linked to a business
bank account.**



HARRISON & HETHERINGTON

Farmstock Auctioneers, Brokers & Valuers

IMPORTANT NOTICE TO PROSPECTIVE PURCHASERS

ALL LOTS MUST BE SETTLED ON THE DAY OF PURCHASE

Parties who have not dealt with the company before should complete the undernoted form
and hand it in to the auctioneers' clerk when a purchase is made.

Alternatively it can be sent to the main office in advance of the sale.

SALE

TRADING NAME

PARTNERS NAMES (if applicable)

.....

.....

FULL POSTAL ADDRESS

.....

.....

.....

POSTCODE

TEL. NO.

HOLDING NO. FLOCK No.

DESTINATION DETAILS OF ANIMALS IF DIFFERENT FROM ABOVE

CPH POST CODE



2018 LIST OF ACCOMMODATION WITHIN EASY REACH OF BORDERWAY MART**Farm House Accommodation**

Janice Byers, Midtown Farm B & B, Easton, Wigton, Cumbria CA7 5DL Tel: 01228 576550
www.midtown-farm.co.uk

Mount Farm Bed & Breakfast, Mount Farm, Blackford, Carlisle CA6 4ER Tel: 01228 674641
www.mount-farm.co.uk

Guest House Accommodation

Abbey Court Guest House, 22-26 London Road, Carlisle CA1 2EL Tel: 01228 528696
www.abbeycourtguesthouse.co.uk

Athena, 168 Warwick Road, Carlisle CA1 1LQ Tel: 01228 529299

Cherry Grove Guest House, 87 Petteril Street, Carlisle CA1 2AW Tel: 01228 541942
www.cherrygroveguesthouse.co.uk

Howard Lodge Guest House, 90 Warwick Road, Carlisle CA1 1JU Tel: 01228 529842
www.howard-lodge.co.uk

Town House B&B, 153 Warwick Road, Carlisle CA1 1LU Tel: 01228 598782
www.townhousebandb.com

Warwick Lodge Guest House, 112 Warwick Road, Carlisle CA1 1LF Tel: 01228 523796
www.warwicklodgencarlisle.co.uk

Hotels

* Greens at Gretna, Glasgow Road, Gretna, Dumfriesshire DG16 5FG Tel: 01461 337621
www.greensatgretna.co.uk

* Gretna Hall, Gretna Loaning, Gretna Green, Dumfries & Galloway DG16 5DY Tel 01461 337621
www.gretnahallhotel.com

* Smiths at Gretna Green, Headless Cross, Gretna Green, Dumfries & Galloway Tel: 01461 337007
www.smithsgretnagreen.com

* Crown Hotel, Station Road, Wetheral, Carlisle Tel: 01228 561888
www.crownhotelwetheral.co.uk

Angus Hotel 14-16 Scotland Road, Carlisle CA3 9DG Tel: 01228 523546
www.angus-hotel.co.uk

Farlam Hall, Country House Hotel, Brampton, Cumbria CA8 2 NG Tel: 016977 46234
www.farlamhall.co.uk

Pinegrove Hotel, 262 London Road, Carlisle CA1 2QS Tel: 01228 524828
www.pinegrovehotel.co.uk

* Customers of H&H offered a Special Rate

BIO SECURITY RULES
HARRISON & HETHERINGTON LIMITED, BORDERWAY MART, CARLISLE
Notice to all Visitors and Traders

Please read and observe the following:

- Excessive dirty vehicles will not be allowed entry, therefore ensure vehicle is clean before arrival.
- All vehicles transporting livestock will be subject to a documentation check before entry to market site.
- All visitors and traders must ensure they wear clean clothing and footwear before entering market site.
- All visitors and traders using car park areas please use main entrance.
- Hauliers and farmers delivering livestock must disinfect their boots before and after loading or unloading.
- Livestock purchased or unsold will not be allowed to move unless an authorised "pass slip" has been issued by the main office.
- No livestock will be allowed to remain on the premises after a sale.
- Only staff, livestock hauliers, owners or their agents are permitted to load or unload livestock.
- Wash hands thoroughly when leaving pennage areas.
- Please observe our staff's instructions at all times.

Our on site Biosecurity Officer, Stuart Graham, will only be too pleased to give you assistance.

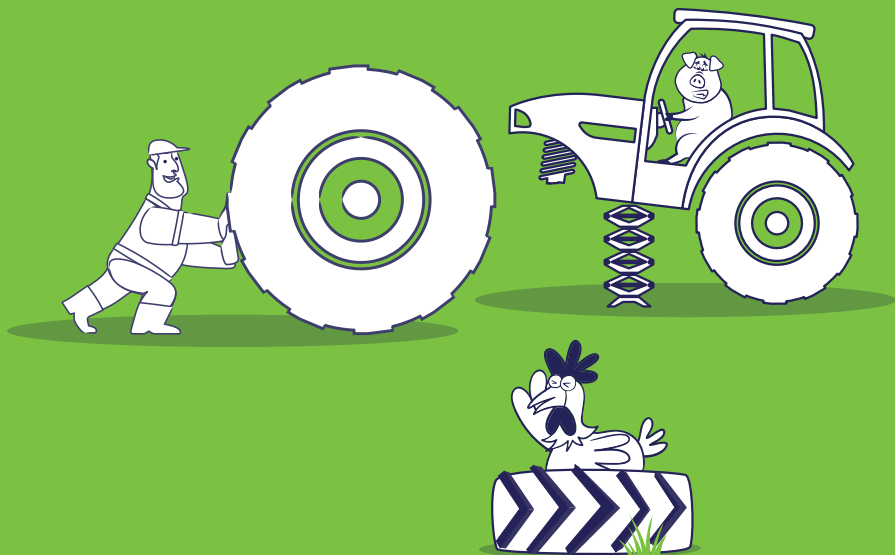


hhgroupplc.co.uk



First in the Field...

When it comes to insurance, one size doesn't fit all



At H&H Insurance Brokers, you get access to the widest range of policies available, rather than just a few standard packages as offered by some insurers.

This means you get exactly the right cover for your farm and don't end up paying for extras you don't need.

And with over 30 years' industry experience, we're fast becoming the insurance broker of choice for the regions' agricultural community.

Why not speak to one of our farm insurance experts today on 01228 406 290 for a 'no obligation' quote.



Authorised and regulated by the
Financial Conduct Authority (FCA)
under Firm Reference Number 305809



www.hhinsurancebrokers.co.uk

General Information & Sale Notes

LOCATION: The Sale will be held in the Borderway Mart, Carlisle Cumbria. Motorists should leave the M6 at Junction 43 and follow CARLISLE signs. The Market is on the left hand side of the road within 1/4 mile of M6.

VIEWING - The Sale Sheep will be available for viewing at Borderway Mart, Carlisle from 1pm on sale day or prior viewing of the sheep is most welcome by appointment with the vendors (see page 8).

HOTELS - There are many hotels within the area, ranging from four star to excellent Bed and Breakfast accommodation, a list of which may be found on page 4 of the catalogue.

CONDITIONS OF SALE - Sold under the conditions of sale as recommended by The Livestock Auctioneers' Association.

METHOD OF SALE - All sheep will be sold in guineas (105 pence) and strictly in catalogue order, unless any alteration is announced by the Auctioneers.

COMMISSIONS - The Auctioneers will dutifully execute commissions to purchase for buyers unable to attend the sale personally, upon receipt of written instructions.

SETTLEMENT AND CLEARANCE OF STOCK - Settlement in full is due immediately at the close of Sale. No animal may leave the Sale Premises without an official 'Pass Slip', obtainable only from the Auctioneers upon settlement.

HOSPITALITY

A Festive Hospitality will be kindly provided
by H&H Insurance Brokers between 5-6pm

LUCKPENNY INSURANCE

Each Vendor will announce at time of sale
of any insurance provided

Detailed information of Texel Sheep Society

British Texel Sheep Society

National Agricultural Centre
Stoneleigh, Kenilworth, Warwickshire
Telephone: 02476 696629 Fax: 02476 696472

CONSIGNORS

ARKLE & ELLEN VALLEY FLOCKS**Lots: 351-360**

G Wilkinson, Arkleby House, Arkleby, Aspatria, Cumbria, CA7 2BP

CRAILLOCH FLOCK**Lots: 420-428**

A McColm, Craillloch Farm, Portwilliam, Newton Stewart, Dumfries & Galloway, DG8 9RN

DOUGANHILL FLOCK**Lots: 400-409**Brian Mactaggart, Douganhill Farm, Orchardton Mains, Palnackie,
Castle Douglas, Dumfries & Galloway, DG7 1QH**DURISDEER FLOCK****Lots: 380-385**

R Osborne, Castlehill, Durisdeer, Thornhill, Dumfries & Galloway, DG3 5BL

EDEN VALLEY FLOCK**Lots: 361-370**

R Wilson, Low Field Farm, Appleby, Cumbria, CA16 6LH

FAR HEY & BRADLEYS FLOCK**Lots: 386-392**Robert & Ryan Bradley, The Old Barn, Far Hey Farm Cross Lane,
Salterforth Barnoldswick, Lancashire, BB18 6JD**HALBEATH FLOCK****Lots: 410-419**

Robin & Caroline Orr, Halbeath Farm, Dunfermline, Fife, KY12 0TY

LLANGWM FLOCK**Lots: 393-399**

Iolo Prys Jones, Bryn Clochydd, Llangwm, Corwen, Denbighshire, LL21 0RA

PLASUCHA FLOCK**Lots: 430-439**

Robert Bennett, Upper Hall, Meiford, Powys, SY22 6HR

STANTON FLOCK**Lots: 371-379**

PK & K Woof, Storth End Farm, Stainton, Kendal, Cumbria, LA8 0DZ

WELSH FLOCK**Lots: 440-446**

S & T Evans, Coedhirion, Llanddarog, Carmarthen, Carmarthenshire, SA32 8BH

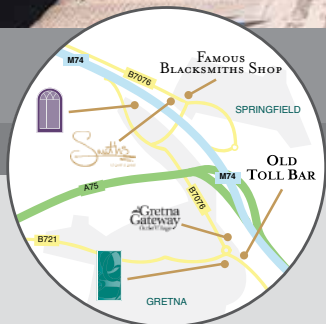
Visit Gretna Green...

GRETNA GREEN

SINCE 1754



Preferential
Accommodation
Rates from
£55.00*
Including full Scottish breakfast
for two people. Quote 'H&H'
*Subject to availability.



♥ Stay ♥ Dine ♥ Meet ♥

Only 10 minutes from H&H Mart located just off M6/M74

Smiths
at gretna green


GRETNA HALL
HISTORIC MARRIAGE HOUSE


GREENS
AT GRETNA

Smiths: 01461 337007 • Gretna Hall: 01461 337257 • Greens: 01461 337621



www.gretnagreen.com



meetings@gretnagreen.com



Gretna Green
Dumfries & Galloway
DG16 5EA

ARKLE & ELLENVALLEY FLOCKS

MESSRS G WILKINSON

Reference to Sires:

MIDLOCK YORKIE **WKM1618123(E)** **Born: 20/03/2016**
 Sire: DEVERONVALE WARRIOR by MULLAN VIVALDI HBN1400934(E)
 Dam: WKM1309371(E) by TEIGLUM THUNDER CFT1201741(E)
 GDam: WKM1205983(E) by FOYLE VIEW SUPERSTAR SMV1100552(E)
 GGDam: WKM09072(2) by BALTIER OLYMPIC FEB08895(2)

Purchased jointly for 24,000gns.



MIDLOCK YORKIE

HALBEATH VIP **ONH1400185(1)** **Born: 01/02/2014**
 Sire: MOSSKNOWE UNITED by HADDO RINGLEADER KWJ1000063(2)
 Dam: QEL1201597(1) by HULL HOUSE SPECIAL BREW MJH1101250(1)
 GDam: QEL08058(1) by SUMMERWOOD GRAND UNION PHS00001(2)
 GGDam: QEL06161(2) by KINGSLAND LION VPK05034(1)

Bred sons to 20,000gns.



HALBEATH VIP

Reference to Service Sires:
SILVERMERE BALTIC
HLN1800043(2)
Born: 18/02/2018

Sire: STRATHBOGIE YES SIR by MILLAR'S WINDBROOK VMG1501215(E)
 Dam: LYM1401388(E) by STRATHBOGIE UNTOUCHABLE IJS1300280(E)
 GDam: LYM1100424(E) by GLENSIDE RAZZLE DAZZLE FPG1000055(E)
 GGDam: LYM08577(E) by ETTRICK NO LIMITS GGH07098(E)

Purchased jointly for 17,000gns.



SILVERMERE BALTIC

351 ELLEN VALLEY
YGW1704013(E)
Born: 10/02/2017

Sire: MIDLOCK YORKIE WKM1618123(E) by DEVERONVALE WARRIOR MGV1500768(1)
 Dam: YGW1000151(1) by DRUMPARK PRESIDENT SRK09759(E)
 GDam: ONH06066(1) by CORNERSTONE KING SID04014(E)
 GGDam: ONH01127(2) by GARNGOUR FIELDMARSHALL CJN99030(2)
 Service Sire: SILVERMERE BALTIC by STRATHBOGIE YES SIR IJS1600754(E)
 Service Details: A'd 11/09/18

The flocks show gimmer, winning Reserve Champion Carlisle Show 2018 and sired by 24,000gn Midlock Yorkie. She is ET sister to 6500gn Ellen Valley Avici sold to the Strathbogie flock.



LOT 351

352 ARKLE**WGA1703820(3)****Born: 10/02/2017**

Sire: MIDLOCK YORKIE WKM1618123(E) by DEVERONVALE WARRIOR MGV1500768(1)
 Dam: WGA1502056(2) by HALBEATH VIP ONH1400185(1)
 GDam: WGA1301374(E) by CAMBWELL ROB ROY LTC1000028(E)
 GGDam: WGA092564(2) by CURLEY ORLANDO TYC08004(E)
 Service Sire: SILVERMERE BALTIC by STRATHBOGIE YES SIR IJS1600754(E)
 Service Details: AI'd 11/09/18

Sired by 24,000gn Midlock Yorkie, and out of a good breeding family. Her gdam was the flocks former show ewe.



LOT 352

353 ARKLE**WGA1703932(E)****Born: 14/02/2017**

Sire: MIDLOCK YORKIE WKM1618123(E) by DEVERONVALE WARRIOR MGV1500768(1)
 Dam: WGA1502072(2) by MILNBANK VAN WILDER LYM1401278(2)
 GDam: WGA1100689(E) by CAMBWELL ROB ROY LTC1000028(E)
 GGDam: ONH05790(2) by HADDO KINGPIN KWJ04427(E)
 Service Sire: SILVERMERE BALTIC by STRATHBOGIE YES SIR IJS1600754(E)
 Service Details: AI'd 11/09/18

Another daughter of 24,000gn Midlock Yorkie, who has sired rams to 3200gns. Her dam sold for 3200gns Twilight Sale 2016. An ET sister has been retained in the flock.



DAM OF LOT 353

354 ELLEN VALLEY**YGW1703959(1)****Born: 10/02/2017**

Sire: HALBEATH VIP ONH1400185(1) by MOSSKNOWE UNITED FWM1300123(E)
 Dam: YGW1502257(2) by FINEVALLEY TRIPLE CROWN CFA1200290(3)
 GDam: YGW1100981(1) by DOUGANHILL PRINCE GCK098205(E)
 GGDam: ONH06045(2) by COURTHILL LEWIS HCC05243(2)
 Service Sire: SILVERMERE BALTIC by STRATHBOGIE YES SIR IJS1600754(E)
 Service Details: AI'd 11/09/18

A good bodied gimmer by Halbeath VIP, who bred rams to 20,000gns. Dam is by 4500gn Finevalley Triple Crown.

355 ELLEN VALLEY YGW1703946(2) Born: 10/02/2017

Sire: HALBEATH VIP ONH1400185(1) by MOSSKNOWE UNITED FWM1300123(E)
 Dam: YGW1502321(1) by TEIGLUM TOPPER CFT1201766(1)
 GDam: GJG092633(2) by GARNGOUR MAJOR CJN06018(2)
 GGDam: GJG06832(3) by METHLICK LOTTO MFM05151(1)
 Service Sire: SILVERMERE BALTIC by STRATHBOGIE YES SIR IJS1600754(E)
 Service Details: AI'd 11/09/18

Another daughter of Halbeath VIP who has bred rams to 20,000gns. Her maternal sister sold for 1800gns Twilight Sale 2017.

356 ELLEN VALLEY YGW1704002(3) Born: 10/02/2017

Sire: MIDLOCK YORKIE WKM1618123(E) by DEVERONVALE WARRIOR MGV1500768(1)
 Dam: YGW1301625(1) by WARDHALL NICEFELLA MLW07114(1)
 GDam: ONH06050(2) by COURTHILL LEWIS HCC05243(2)
 GGDam: ONH04548(1) by HAREMOSS IMPORTANT BOY GME02010(3)
 Service Sire: SILVERMERE BALTIC by STRATHBOGIE YES SIR IJS1600754(E)
 Service Details: AI'd 11/09/18

Another daughter of 24,000gn Midlock Yorkie.

357 ELLEN VALLEY YGW1703995(2) Born: 10/02/2017

Sire: WARDHALL YORKIE MLW1601874(1) by TEIGLUM WINSTON CFT1503879(E)
 Dam: YGW1301607(2) by TEIGLUM TOPPER CFT1201766(1)
 GDam: YGW1100785(2) by DOUGANHILL PRINCE GCK098205(E)
 GGDam: ONH06050(2) by COURTHILL LEWIS HCC05243(2)
 Service Sire: SILVERMERE BALTIC by STRATHBOGIE YES SIR IJS1600754(E)
 Service Details: AI'd 11/09/18

Sired by 3000gn Wardhall Yorkie, a full sister has been retained in the flock.

358 ARKLE WGA1704075(2) Born: 25/02/2017

Sire: WARDHALL YORKIE MLW1601874(1) by TEIGLUM WINSTON CFT1503879(E)
 Dam: WGA1502305(1) by MILNBANK VANTASTIC LYM1401438(E)
 GDam: WGA092752(2) by CURLEY ORLANDO TYC08004(E)
 GGDam: ONH03102(1) by HAREMOSS IMPORTANT BOY GME02010(3)
 Service Sire: SILVERMERE BALTIC by STRATHBOGIE YES SIR IJS1600754(E)
 Service Details: AI'd 11/09/18

Another daughter of Wardhall Yorkie.

359 ARKLE WGA1703799(2) Born: 10/02/2017

Sire: MIDLOCK YORKIE WKM1618123(E) by DEVERONVALE WARRIOR MGV1500768(1)
 Dam: WGA1502043(2) by HALBEATH VIP ONH1400185(1)
 GDam: WGA1301371(E) by CAMBWELL ROB ROY LTC1000028(E)
 GGDam: WGA092564(2) by CURLEY ORLANDO TYC08004(E)
 Service Sire: SILVERMERE BALTIC by STRATHBOGIE YES SIR IJS1600754(E)
 Service Details: AI'd 11/09/18

From the same family as Lot 352, also sired by Midlock Yorkie.

360 ARKLE WGA1703811(1) Born: 10/02/2017

Sire: MIDLOCK YORKIE WKM1618123(E) by DEVERONVALE WARRIOR MGV1500768(1)
 Dam: WGA1502107(1) by TEIGLUM TOPPER CFT1201766(1)
 GDam: WGA1000136(1) by MULLAGLASS XHR09007(2)
 GGDam: WGA071335(2) by ARKLE JAZZMAN WGA03011(1)
 Service Sire: SILVERMERE BALTIC by STRATHBOGIE YES SIR IJS1600754(E)
 Service Details: AI'd 11/09/18

Another daughter of Wardhall Yorkie.

EDEN VALLEY FLOCK

R WILSON

Reference to Service Sires:

EDEN VALLEY A1

WEV1701001(E)

Born: 14/02/2017

Sire: CLINTERTY YOGI BEAR by TOPHILL WALL ST HPH1500816(E)

Dam: WPS1500724(E) by ANGLEZARKE UNO SSQ1300204(E)

GDam: WPS1300436(E) by SPORTSMANS TREMENDOUS II BGS1200471(E)

GGDam: WPS1000054(E) by CAMBWELL MOUNTAIN LTC06046(1)

Bred very well in his first season across 4 flocks, two of the flocks ewe lambs won 2nd prize and 4th prize Great Yorkshire Show 2018.



EDEN VALLEY A1

ALDAN BLOCKBUSTER

JDY1800698(E1)

Born: 15/02/2018

Sire: DONRHO ARISTOCRAC by MILNBANK WOMANISER LYM1501783(E)

Dam: JDY1600572(E) by EDEN VALLEY WIZ KID WEV1500437(2)

GDam: JDY1300133(E) by CONNACHAN SHARKY YSM1101560(E)

GGDam: RNA08423(2) by HUMESTON MIDAS GIH06080(1)

Purchased jointly from Lanark, dam is by Eden Valley Wiz Kid with daughters selling to 18,000gns. Milnbank Womanwiser (*gsire*) bred gimmers to 16,000gns.



ALDAN BLOCKBUSTER

AULDHOUSEBURN BOLT**BYZ1820691(E2)****Born: 04/02/2018**

Scrapie genotype: Scrapie plan ARR/ARR (Private)

Sire: SPORTSMANS A STAR by TEIGLUM YOUNGGUN CFT1604569(E)

Dam: BYZ1615456(E) by GLENSIDE WILLIE WINKIE FPG1501071(2)

GDam: BYZ1410842(E) by STRATHBOGIE UNTOUCHABLE IJS1300280(E)

GGDam: GGH1101116(E) by KNOCK REEBOK HAK1000041(E)

Purchased jointly for 15,000gns. 3dam sold for 7500gns, and is sired by the tremendous 13,000gn Sportsman Astar, with sons selling to 75,000gns.



AULDHOUSEBURN BOLT

361 EDEN VALLEY**WEV1700915(E)****Born: 11/02/2017**

Sire: BRYN-Y-COED YOGI BEAR SYG1600166(E) by SPORTSMANS TREMENDOUS II BGS12

Dam: WEV1400281(E) by ANGLEZARKE UNO SSQ1300204(E)

GDam: WPS1000071(E) by KNOCK OYSTER HAK08905(2)

GGDam: WPS08135(1) by CASTLECAIRN NEVER AGAIN RNA07199(E)

EBVs:	Litter Size	8 Wk Wgt	Maternal	Scan Wgt	Musc Dpth	Fat Dpth	CT Gigot	Musc	Index
	0.10	3.44 kgs	0.14kgs	7.64 kgs	1.64 mm	0.31 mm	4.74mm		284
Accuracy	46%	72%	34%	79%	72%	75%	63%		77%

Service Sire: ALDAN BLOCKBUSTER by DONRHO ARISTOCRAC DNN1701279(E)

Service Details: Served 21/10/18. Scanned 1.

Won Champion Texel and Reserve Interbreed Champion Skelton Show.

EMBRYOS HAVE BEEN TAKEN AND RETAINED FOR VENDORS OWN USE**362 EDEN VALLEY****WEV1700999(E)****Born: 15/02/2017**

Sire: KNOCK YANKEE HAK1601045(3) by TOPHILL WALL ST HPH1500816(E)

Dam: WEV1500448(E) by ANGLEZARKE UNO SSQ1300204(E)

GDam: WEV1300241(E) by SPORTSMANS TREMENDOUS II BGS1200471(E)

GGDam: WPS1000076(E) by KNOCK OYSTER HAK08905(2)

EBVs:	Litter Size	8 Wk Wgt	Maternal	Scan Wgt	Musc Dpth	Fat Dpth	CT Gigot	Musc	Index
	0.14	4.98 kgs	0.06kgs	11.23 kgs	1.79 mm	0.30 mm	6.44mm		315
Accuracy	39%	72%	31%	77%	72%	76%	65%		76%

Service Sire: AULDHOUSEBURN BOLT by SPORTSMANS A STAR BGS1702642(E)

Service Details: Al'd 21/09/18. Scanned 2.

ET sister to 2600gn Eden Valley All Star who won 1st prize shearing and Champion Interbreed pairs GYS, also Male Champion Welsh National Sale.

363 EDEN VALLEY**WEV1700934(E)****Born: 12/02/2017**

Sire: KNOCK YANKEE HAK1601045(3) by TOPHILL WALL ST HPH1500816(E)
 Dam: WEV1500448(E) by ANGLEZARKE UNO SSQ1300204(E)
 GDam: WEV1300241(E) by SPORTSMANS TREMENDOUS II BGS1200471(E)
 GGDam: WPS1000076(E) by KNOCK OYSTER HAK08905(2)

EBVs:	Litter Size	8 Wk Wgt	Maternal	Scan Wgt	Musc Dpth	Fat Dpth	CT Gigot	Musc	Index
	0.14	5.51 kgs	0.06kgs	12.77 kgs	1.53 mm	0.55 mm	7.31mm		317
Accuracy	39%	72%	31%	77%	72%	75%	65%		76%

Service Sire: AULDBURN BOLT by SPORTSMANS A STAR BGS1702642(E)
 Service Details: AI'd 21/09/18. Scanned 2.

Full sister to Lot 362.

364 EDEN VALLEY**WEV1700942(E)****Born: 13/02/2017**

Sire: BRYN-Y-COED YOGI BEAR SYG1600166(E) by SPORTSMANS TREMENDOUS II BGS12
 Dam: WEV1200121(E) by DEVERONVALE PERFECTION MGVO9436(E)
 GDam: WPS1000076(E) by KNOCK OYSTER HAK08905(2)
 GGDam: WPS00051(2) by EARNSHAW FINESSE MOJ99011(1)

EBVs:	Litter Size	8 Wk Wgt	Maternal	Scan Wgt	Musc Dpth	Fat Dpth	CT Gigot	Musc	Index
	0.06	3.93 kgs	0.13kgs	7.73 kgs	3.35 mm	0.04 mm	4.85mm		332
Accuracy	49%	69%	33%	76%	70%	74%	61%		74%

Service Sire: AULDBURN BOLT by SPORTSMANS A STAR BGS1702642(E)
 Service Details: AI'd 21/09/18. Scanned 2.

Dam also bred Eden Valley Wiz Kid, who bred gimmers selling to 18,000gns.

365 EDEN VALLEY**WEV1701055(2)****Born: 20/03/2017**

Sire: HEXEL WILDCARD MZH1500077(E) by DRUMPARK UNIQUE SRK1300463(E)
 Dam: WEV1400267(2) by SPORTSMANS TREMENDOUS II BGS1200471(E)
 GDam: WEV1100031(E) by DOUGANHILL MC FLY GCK06073(1)
 GGDam: FEB09949(3) by KELSO OZONE MBZ08021(E)

EBVs:	Litter Size	8 Wk Wgt	Maternal	Scan Wgt	Musc Dpth	Fat Dpth	CT Gigot	Musc	Index
	0.14	3.43 kgs	0.07kgs	7.52 kgs	1.21 mm	0.30 mm	3.94mm		271
Accuracy	56%	67%	44%	73%	68%	71%	63%		72%

Service Sire: AULDBURN BOLT by SPORTSMANS A STAR BGS1702642(E)
 Service Details: AI'd 21/09/18. Scanned 2.

Dam bred last year's show ewe lamb, who is in this years flush team, also Eden Valley Billy The Kid, who is being retained in the flock as a stock ram.

366 EDEN VALLEY**WEV1701058(2)****Born: 21/03/2017**

Sire: HEXEL WILDCARD MZH1500077(E) by DRUMPARK UNIQUE SRK1300463(E)
 Dam: WEV1500439(E) by OBERSTOWN USAIN BOLT E.PFI1300026(E)
 GDam: WEV1400297(E) by ANGLEZARKE UNO SSQ1300204(E)
 GGDam: WEV1200111(E) by DEVERONVALE PERFECTION MGVO9436(E)

EBVs:	Litter Size	8 Wk Wgt	Maternal	Scan Wgt	Musc Dpth	Fat Dpth	CT Gigot	Musc	Index
	0.17	4.80 kgs	0.30kgs	10.67 kgs	1.91 mm	0.02 mm	5.06mm		334
Accuracy	53%	69%	42%	74%	70%	73%	64%		73%

Service Sire: AULDBURN BOLT by SPORTSMANS A STAR BGS1702642(E)
 Service Details: AI'd 21/09/18. Scanned 2.

GDam has been a member of the show team for the past four seasons and was unbeaten as a lamb and a ewe.

367 EDEN VALLEY**WEV1700988(E)****Born: 13/02/2017**

Sire: BRYN-Y-COED YOGI BEAR SYG1600166(E) by SPORTSMANS TREMENDOUS II BGS12
 Dam: WPS1400578(E) by ANGLEZARKE UNO SSQ1300204(E)
 GDam: WPS1200334(E) by CARRAN SUTHERLAND'S STAR SCK1100086(E)
 GGDam: WPS1000069(E) by CAMBWELL MOUNTAIN LTC06046(1)

EBVs:	Litter Size	8 Wk Wgt	Maternal	Scan Wgt	Musc Dpth	Fat Dpth	CT Gigot	Musc	Index
	0.13	4.39 kgs	0.36kgs	9.02 kgs	2.02 mm	0.68 mm	5.77mm		325
Accuracy	45%	69%	37%	76%	69%	74%	61%		74%

Service Sire: AULHOUSEBURN BOLT by SPORTSMANS A STAR BGS1702642(E)

Service Details: AI'd 21/09/18. Scanned 2.

Full sister to Lot 368.

368 EDEN VALLEY**WEV1700987(E)****Born: 13/02/2017**

Sire: BRYN-Y-COED YOGI BEAR SYG1600166(E) by SPORTSMANS TREMENDOUS II BGS1200471(E)
 Dam: WPS1400578(E) by ANGLEZARKE UNO SAQ1300204(E)
 GDam: WPS1200334(E) by CARRAN SUTHERLAND'S STAR SCK1100086(E)
 GGDam: WPS1000069(E) by CAMBWELL MOUNTAIN LTC06046(1)

EBVs:	Litter Size	8 Wk Wgt	Maternal	Scan Wgt	Musc Dpth	Fat Dpth	CT Gigot	Musc	Index
	0.13	4.23 kgs	-0.36kgs	8.48 kgs	2.66 mm	-0.75 mm	5.47mm		333
Accuracy	45%	69%	69%	76%	69%	74%	61%		74%

Service Sire: AULHOUSEBURN BOLT by SPORTSMANS A STAR BGS1702642(E)

Service Details: AI'd 21/09/18

369 Embryo Implanted 21/09/18

Breeding of Embryo:

Dam: WEV1500429(2) by SPORTSMANS TREMENDOUS II BGS1200471(E)

Sire: AULHOUSEBURN BOLT BWZ1820691(E2)

From the same family as Eden Valley Wiz Kid, who bred gimmers to 18,000gns.

370 Embryo Implanted 21/09/18

Breeding of Embryo:

Dam: WEV1700906(E) by ANGLEZARKE UNO SSQ1300204(E)

Sire: ALDAN BLOCKBUSTER JDY1800698(E1)

Gdam is maternal sister to dam of Eden Valley Warriar King, who has bred daughters to 7800gns.

STAINTON FLOCK

PK & R WOOF

Reference to Service Sires:

KNOCK YANKEE **HAK1601045(3)** **Born: 19/02/2016**
 Sire: TOPHILL WALL ST by PROCTERS VENTURA PFD1403565(E)
 Dam: LTC1301593(1) by CAMBWELL TRADEMARK LTC1201161(3)
 GDam: LTC083152(2) by CAMBWELL LAIRD LTC05507(2)
 GGDam: LTC02032(1) by CAMBWELL HERO 2ND LTC01082(E)

EDEN VALLEY A1 **WEV1701001(E)** **Born: 14/02/2017**
 Sire: CLINTERTY YOGI BEAR by TOPHILL WALL ST HPH1500816(E)
 Dam: WPS1500724(E) by ANGLEZARKE UNO SSQ1300204(E)
 GDam: WPS1300436(E) by SPORTSMANS TREMENDOUS II BGS1200471(E)
 GGDam: WPS1000054(E) by CAMBWELL MOUNTAIN LTC06046(1)

Bred very well in his first season across 4 flocks, two of the flocks ewe lambs won 2nd prize and 4th prize Great Yorkshire Show 2018.



EDEN VALLEY A1

AULDHOUSEBURN BOLT **BYZ1820691(E2)** **Born: 04/02/2018**
 Sire: SPORTSMANS A STAR by TEIGLUM YOUNGGUN CFT1604569(E)
 Dam: BYZ1615456 (E) by GLENSIDE WILLIE WINKIE FPG1501071(2)
 GDam: BYZ1410842(E) by STRTHBOGIE UNTOUCHABLE IJS1300280(E)
 GGDam: GGH1101116(E) by KNOCK REEBOCK HAK10000041(E)

Purchased jointly for 15,000gns Carlisle 2018.



AULDHOUSEBURN BOLT

371 STAINTON**WPS1701063(E)****Born: 14/02/2017**

Sire: HEXEL WILDCARD MZH1500077(E) by DRUMPAK UNIQUE SRK1300463(E)
 Dam: WPS1300436(E) by SPORTSMANS TREMENDOUS II BGS1200471(E)
 GDam: WPS1000054(E) by CAMBWELL MOUNTAIN LTC06046(1)
 GGDam: WPS03085(2) by STAINTON INHERIT WPS02050(1)

EBVs:	Litter Size	8 Wk Wgt	Maternal	Scan Wgt	Musc Dpth	Fat Dpth	CT Gigot	Musc	Index
	0.23	4.35 kgs	0.08kgs	9.72 kgs	1.26 mm	0.42 mm	5.39mm		311
Accuracy	57%	73%	51%	78%	74%	77%	68%		77%

Service Sire: KNOCK YANKEE by TOPHILL WALL ST HPH1500816(E)
 Service Details: AI'd 24/09/18

Dam is gdam of Eden Valley A1.

372 STAINTON**WPS1701050(E)****Born: 14/02/2017**

Sire: KNOCK YANKEE HAK1601045(3) by TOPHILL WALL ST HPH1500816(E)
 Dam: WPS1500727(E) by ANGLEZARKE UNO SSQ1300204(E)
 GDam: WPS1300433(3) by SPORTSMANS TREMENDOUS II BGS1200471(E)
 GGDam: WPS09128(3) by MELLOR VALE MISSILE BCM06034(1)

EBVs:	Litter Size	8 Wk Wgt	Maternal	Scan Wgt	Musc Dpth	Fat Dpth	CT Gigot	Musc	Index
	0.20	2.98 kgs	0.34kgs	7.36 kgs	0.92 mm	0.09 mm	4.66mm		237
Accuracy	42%	73%	33%	78%	73%	76%	67%		76%

Service Sire: EDEN VALLEY A1 by CLINTERTY YOGI BEAR BBY1601064(E)
 Service Details: AI'd 24/09/18

Dam is one of the best ewes in the flock.

373 STAINTON**WPS1701095(E)****Born: 15/02/2017**

Sire: KNOCK YANKEE HAK1601045(3) by TOPHILL WALL ST HPH1500816(E)
 Dam: WPS1500727(E) by ANGLEZARKE UNO SSQ1300204(E)
 GDam: WPS1300433(3) by SPORTSMANS TREMENDOUS II BGS1200471(E)
 GGDam: WPS09128(3) by MELLOR VALE MISSILE BCM06034(1)

EBVs:	Litter Size	8 Wk Wgt	Maternal	Scan Wgt	Musc Dpth	Fat Dpth	CT Gigot	Musc	Index
	0.20	4.59 kgs	0.34kgs	10.43 kgs	1.19 mm	0.14 mm	6.37mm		296
Accuracy	42%	72%	33%	78%	73%	76%	67%		76%

Service Sire: AULDBURN BOLT by SPORTSMANS A STAR BGS1702642(E)
 Service Details: AI'd 24/09/18

Dam was the flock's best gimmer in the 2015 crop.

374 STAINTON**WPS1701106(E)****Born: 16/02/2017**

Sire: KNOCK YANKEE HAK1601045(3) by TOPHILL WALL ST HPH1500816(E)
 Dam: WPS1500807(E) by ANGLEZARKE UNO SSQ1300204(E)
 GDam: WPS1300433(3) by SPORTSMANS TREMENDOUS II BGS1200471(E)
 GGDam: WPS09128(3) by MELLOR VALE MISSILE BCM06034(1)

EBVs:	Litter Size	8 Wk Wgt	Maternal	Scan Wgt	Musc Dpth	Fat Dpth	CT Gigot	Musc	Index
	0.26	4.52 kgs	0.88kgs	9.80 kgs	2.35 mm	0.08 mm	6.02mm		324
Accuracy	43%	72%	33%	78%	73%	76%	66%		76%

Service Sire: AULDBURN BOLT by SPORTSMANS A STAR BGS1702642(E)
 Service Details: AI'd 24/09/18

A daughter of Knock Yankee out of the flock's show ewe.

375 STAINTON**WPS1701148(2)****Born: 05/03/2017**

Sire: ANGLEZARKE UNO SSQ1300204(E) by KNOCK TRIDENT HAK1200387(E)
 Dam: WPS1400646(E) by ANGLEZARKE UNO SSQ1300204(E)
 GDam: WPS1200326(E) by CARRAN SUTHERLAND'S STAR SCK1100086(E)
 GGDam: WPS1000029(E) by FACHELL ON APPROVAL MIF08827(E)

EBVs:	Litter Size	8 Wk Wgt	Maternal	Scan Wgt	Musc Dpth	Fat Dpth	CT Gigot	Musc	Index
	0.16	5.34 kgs	0.47kgs	10.34 kgs	3.40 mm	0.36 mm		6.17mm	386
Accuracy	60%	71%	52%	77%	71%	75%		65%	75%

Service Sire: AULHOUSEBURN BOLT by SPORTSMANS A STAR BGS1702642(E)
 Service Details: AI'd 24/09/18

An Anglezarke Uno daughter out of a good breeding family.

376 STAINTON**WPS1701145(E)****Born: 19/02/2017**

Sire: KNOCK YANKEE HAK1601045(3) by TOPHILL WALL ST HPH1500816(E)
 Dam: WPS1500826(E) by ANGLEZARKE UNO SSQ1300204(E)
 GDam: WPS1300500(E) by SPORTSMANS TREMENDOUS II BGS1200471(E)
 GGDam: WPS1100228(E) by STAINTON RICOCHET WPS1000030(E)

EBVs:	Litter Size	8 Wk Wgt	Maternal	Scan Wgt	Musc Dpth	Fat Dpth	CT Gigot	Musc	Index
	0.18	4.92 kgs	0.06kgs	10.62 kgs	2.65 mm	0.22 mm		6.37mm	337
Accuracy	42%	72%	34%	78%	73%	76%		67%	76%

Service Sire: AULHOUSEBURN BOLT by SPORTSMANS A STAR BGS1702642(E)
 Service Details: AI'd 24/09/18

Full sister won Champion Welshpool and sold for 4000gns.

377 STAINTON**WPS1701130(E)****Born: 17/02/2017**

Sire: HEXEL WILDCARD MZH1500077(E) by DRUMPARK UNIQUE SRK1300463(E)
 Dam: WPS1300436(E) by SPORTSMANS TREMENDOUS II BGS1200471(E)
 GDam: WPS1000054(E) by CAMBWELL MOUNTAIN LTC06046(1)
 GGDam: WPS03085(2) by STAINTON INHERIT WPS02050(1)

EBVs:	Litter Size	8 Wk Wgt	Maternal	Scan Wgt	Musc Dpth	Fat Dpth	CT Gigot	Musc	Index
	0.23	4.02 kgs	0.08kgs	9.11 kgs	1.83 mm	0.41 mm		5.05mm	315
Accuracy	57%	73%	51%	78%	74%	77%		68%	77%

Service Sire: KNOCK YANKEE by TOPHILL WALL ST HPH1500816(E)
 Service Details: AI'd 24/09/18

Full sister to Lot 371.

378 STAINTON**WPS1701101(2)****Born: 16/02/2017**

Sire: HEXEL WILDCARD MZH1500077(E) by DRUMPARK UNIQUE SRK1300463(E)
 Dam: WPS09128(3) by MELLOR VALE MISSILE BCM06034(1)
 GDam: WPS07517(1) by CAMBWELL MOUNTAIN LTC06046(1)
 GGDam: WPS03085(2) by STAINTON INHERIT WPS02050(1)

EBVs:	Litter Size	8 Wk Wgt	Maternal	Scan Wgt	Musc Dpth	Fat Dpth	CT Gigot	Musc	Index
	0.24	3.44 kgs	0.20kgs	7.67 kgs	1.47 mm	0.13 mm		4.45mm	270
Accuracy	59%	71%	46%	77%	71%	75%		65%	75%

Service Sire: AULHOUSEBURN BOLT by SPORTSMANS A STAR BGS1702642(E)
 Service Details: AI'd 24/09/18

Out of a very good family.

379 STANTON**WPS1701161(1)****Born: 17/03/2017**

Sire: HEXEL WILDCARD MZH1500077(E) by DRUMPARK UNIQUE SRK1300463(E)
 Dam: WPS1500727(E) by ANGLEZARKE UNO SSQ1300204(E)
 GDam: WPS1300433(3) by SPORTSMANS TREMENDOUS II BGS1200471(E)
 GGDam: WPS09128(3) by MELLOR VALE MISSILE BCM06034(1)

EBVs:	Litter Size	8 Wk Wgt	Maternal	Scan Wgt	Musc Dpth	Fat Dpth	CT	Gigot	Musc	Index
	0.17	3.34 kgs	0.36kgs	7.37 kgs	1.29 mm	0.42 mm		4.42mm		271
Accuracy	54%	72%	44%	77%	72%	75%		66%		76%

Service Sire: EDEN VALLEY A1 by CLINTERTY YOGI BEAR BBY1601064(E)

Service Details: Al'd 24/09/18

Maternal sister to lot 372.

MacTAGGART BROS & CO.

Livestock Agents

For a Specialist Service with Distance No Object

Contact

MacTaggart Bros

The No. 1 Livestock Hauliers

With Regular Services to

Inverness, Aberdeen, Lincoln, Manchester and Wales

You are Guaranteed a Quick and Efficient

Service for all your Haulage Requirements



Office:
 Station Yard, Castle Douglas.
 Tel: 01556 503791 Fax: 01556 504003
 Haugh of Urr: 01556 660303/660403
 Kirkpatrick Durham: 01556 650361/650342



DURISDEER FLOCK

ROBERT OSBORNE

Reference to Service Sire:

GARNGOUR ALCAPONE **CJN1704950(E)** **Born: 21/03/2017**
 Sire: KNOCK YARDSMAN by TOPHILL WALL ST HPH1500816(E)
 Dam: CJN1604416(E) by MOSSVALE WINSTON MAV1500787(2)
 GDam: CJN1504066(E) by CASTLECAIRN VAVAVOOM RNA1400593(3)
 GGDam: CJN1403159(E) by SPRINGWELL ULSTERBOY GRS1301242(E)

380 DURISDEER **ORD1706596(3)** **Born: 20/02/2017**
 Sire: HEYWORTH LODGE WARRIOR LSH1500413(E) by STANTON VIGILANTE WPS140059
 Dam: ORD1504813(2) by HULL HOUSE VERMILION MJH1404268(E)
 GDam: ORD1201892(2) by PROCTERS SERGEANT MAJOR PFD1100968(E)
 GGDam: ORD1000013(1) by CASTLEKNOWE OR NEVER BKL08168(1)
 Service Sire: GARNGOUR ALCAPONE by KNOCK YARDSMAN HAK1601070(E)
 Service Details: AI'd 01/09/18

381 DURISDEER **ORD1706689(1)** **Born: 25/02/2017**
 Sire: HEYWORTH LODGE WARRIOR LSH1500413(E) by STANTON VIGILANTE WPS140059
 Dam: ORD1504727(2) by PROCTERS U.S. PRESIDENT PFD1302592(E)
 GDam: ORD1100841(1) by GARNGOUR RADICAL CJN1000026(2)
 GGDam: ORD05113(2) by GLENSIDE KING II FPG04308(1)
 Service Sire: GARNGOUR ALCAPONE by KNOCK YARDSMAN HAK1601070(E)
 Service Details: AI'd 01/09/18

382 DURISDEER **ORD1706685(3)** **Born: 24/02/2017**
 Sire: BALTIER YOURE THE ONE FEB1600395(E) by GARNGOUR UPPERCLASS CJN130222
 Dam: ORD1201941(2) by LOOSEBEARE SUPER SCOT QEL1101008(E)
 GDam: ORD08131(1) by GLENSIDE KING II FPG04308(1)
 GGDam: ORD05028(2) by DURISDEER KEEPER ORD04078(2)
 Service Sire: GARNGOUR ALCAPONE by KNOCK YARDSMAN HAK1601070(E)
 Service Details: AI'd 01/09/18

383 DURISDEER **ORD1706623(2)** **Born: 22/02/2017**
 Sire: HEYWORTH LODGE WARRIOR LSH1500413(E) by STANTON VIGILANTE WPS140059
 Dam: ORD1504820(2) by LOOSEBEARE SUPER SCOT QEL1101008(E)
 GDam: ORD1100813(2) by CORRIE PHAMASIST BCE09008(2)
 GGDam: ORD09122(1) by HULL HOUSE MA MAN MJH06203(1)
 Service Sire: GARNGOUR ALCAPONE by KNOCK YARDSMAN HAK1601070(E)
 Service Details: AI'd 01/09/18

384 DURISDEER **ORD1706664(2)** **Born: 24/02/2017**
 Sire: PROCTERS U.S. PRESIDENT PFD1302592(E) by CAIRNAM TALISMAN GCF1201109(E)
 Dam: ORD1504769(1) by DAMSIDE VICTORY JCS1404850(1)
 GDam: ORD1201864(2) by PROCTERS SERGEANT MAJOR PFD1100968(E)
 GGDam: ORD1000009(2) by CLAYBURY POWERPACKER DHL09010(3)
 Service Sire: GARNGOUR ALCAPONE by KNOCK YARDSMAN HAK1601070(E)
 Service Details: AI'd 01/09/18

385 DURISDEER **ORD1706679(2)** **Born: 24/02/2017**
 Sire: HEYWORTH LODGE WARRIOR LSH1500413(E) by STANTON VIGILANTE WPS140059
 Dam: ORD1504746(2) by LOOSEBEARE SUPER SCOT QEL1101008(E)
 GDam: ORD1100882(2) by HADDO RAMBO KWJ1000062(2)
 GGDam: ORD09102(1) by CASTLEKNOWE OR NEVER BKL08168(1)
 Service Sire: GARNGOUR ALCAPONE by KNOCK YARDSMAN HAK1601070(E)
 Service Details: AI'd 01/09/18

FAR HEY & BRADLEYS FLOCKS

ROBERT & RYAN BRADLEY

Reference to Sire:

BRYN-Y-COED YOGI BEAR **SYG1600166(E)** **Born: 27/02/2016**
 Sire: SPORTSMANS TREMENDOUS II BGS1200471(E) by MILNBANK SPECIAL ONE LYM1100405
 Dam: BRYN GARTH THB1401130(E) by TULLYLAGAN TONKA HPY1200404(E)
 GDam: BRYN GARTH THB1100323(3) by MILLAR'S OUTSTANDING VMG08528(E)
 GGDam: BRYN GARTH THB091490(2) by ANGLEZARKE NIMROD SSQ07750(1)

Bred Reserve Champion Lanark who sold for 4800gns.



BRYN-Y-COED YOGI BEAR



DAUGHTER OF
BRYN-Y-COED YOGI BEAR

Reserve Champion Lanark who sold for 4800gns.

Reference to Service Sire:

AULDHOUSEBURN BOLT **BYZ1820691(E2)** **Born: 04/02/2018**
 Scrapie genotype: Scrapie plan ARR/ARR (Private)
 Sire: SPORTSMANS A STAR by TEIGLUM YOUNGGUN CFT1604569(E)
 Dam: BYZ1615456(E) by GLENSIDE WILLIE WINKIE FPG1501071(2)
 GDam: BYZ1410842(E) by STRATHBOGIE UNTOUCHABLE IJS1300280(E)
 GGDam: GGH1101116(E) by KNOCK REEBOK HAK1000041(E)

Purchased jointly for 15,000gns.



AULDHOUSEBURN BOLT

386 FAR HEY BRF1700348(E) Born: 28/02/2017

Sire: ANGLEZARKE UNO SSQ1300204(E) by KNOCK TRIDENT HAK1200387(E)
 Dam: BRF1400258(1) by SPORTSMANS TREMENDOUS II BGS1200471(E)
 GDam: LSH1200189(2) by ALLANFAULD ROCKAFELLA XMM1000014(E)
 GGDam: GCT08033(1) by MIDLOCK NUTCRACKER WKM07026(1)
 Service Sire: AULDHOUSEBURN BOLT by SPORTSMANS A STAR BGS1702642(E)
 Service Details: AI'd 17/09/18

Maternal sisters have sold to 5000gns, 3000gns and 1900gns.

387 BRADLEYS BYK1700239(E) Born: 26/02/2017

Sire: HALBEATH VIP ONH1400185(1) by MOSSKNOWE UNITED FWM1300123(E)
 Dam: BYK1600204(E) by MILLAR'S WHO'S THE BOY VMG1501276(E)
 GDam: BYK1400128(E) by ANGLEZARKE UNO SSQ1300204(E)
 GGDam: BYK1100044(E) by CONNACHAN RHINO YSM1000005(E)
 Service Sire: AULDHOUSEBURN BOLT by SPORTSMANS A STAR BGS1702642(E)
 Service Details: AI'd 17/09/18

388 FAR HEY BRF1700328(2) Born: 06/02/2017

Sire: CLINTERTY YOGI BEAR BBY1601064(E) by TOPHILL WALL ST HPH1500816(E)
 Dam: BCM1500324(1) by KNAF VICIOUS SID CKP1400025(E)
 GDam: BCM1300192(E) by TULLYLAGAN TONKA HPY1200404(E)
 GGDam: BCM1000001(E) by BALTIER PANTHER FEB09977(1)
 Service Sire: AULDHOUSEBURN BOLT by SPORTSMANS A STAR BGS1702642(E)
 Service Details: AI'd 17/09/18

Maternal brothers have sold to 2600gns and dam was purchased for 4000gns.

389 BRADLEYS BYK1700261(2) Born: 01/04/2017

Sire: BRYNYCOED YOGI BEAR SYG1600166(E) by SPORTSMANS TREMENDOUS II BGS12
 Dam: BYK1400128(E) by ANGLEZARKE UNO SSQ1300204(E)
 GDam: BYK1100044(E) by CONNACHAN RHINO YSM1000005(E)
 GGDam: GAR09094(3) by MELLOR VALE MASTERPIECE BCM06007(E)
 Service Sire: AULDHOUSEBURN BOLT by SPORTSMANS A STAR BGS1702642(E)
 Service Details: AI'd 17/09/18

Sired by Bryn-Y-Coed Yogi Bear who bred Reserve Champion Lanark, that sold for 4800gns.

Maternal sisters have sold to 2600gns and 2100gns.

390 FAR HEY BRF1700341(E) Born: 27/02/2017

Sire: ANGLEZARKE UNO SSQ1300204(E) by KNOCK TRIDENT HAK1200387(E)
 Dam: BRF1400258(1) by SPORTSMANS TREMENDOUS II BGS1200471(E)
 GDam: LSH1200189(2) by ALLANFAULD ROCKAFELLA XMM1000014(E)
 GGDam: GCT08033(1) by MIDLOCK NUTCRACKER WKM07026(1)
 Service Sire: AULDHOUSEBURN BOLT by SPORTSMANS A STAR BGS1702642(E)
 Service Details: AI'd 17/09/18

Full sister to Lot 386.

391 FAR HEY BRF1700343(E) Born: 27/02/2017

Sire: ANGLEZARKE UNO SSQ1300204(E) by KNOCK TRIDENT HAK1200387(E)
 Dam: MZH1400043(E) by CAMB WELL TAURUS LTC1201035(E)
 GDam: MZH1200139(E) by GLENSIDE RAZZLE DAZZLE FPG1000055(E)
 GGDam: MZH1000023(E) by DOUGANHILL MC FLY GCK06073(1)
 Service Sire: AULDHOUSEBURN BOLT by SPORTSMANS A STAR BGS1702642(E)
 Service Details: AI'd 17/09/18

Full brother sold for 1800gns, and full sister to 1600gns. Dam was purchased for 2000gns from the Hexel flock.

392 BRADLEYS BYK1700262(2) Born: 01/04/2017

Sire: BRYNYCOED YOGI BEAR SYG1600166(E) by SPORTSMANS TREMENDOUS II BGS12
 Dam: BYK1400128(E) by ANGLEZARKE UNO SSQ1300204(E)
 GDam: BYK1100044(E) by CONNACHAN RHINO YSM1000005(E)
 GGDam: GAR09094(3) by MELLOR VALE MASTERPIECE BCM06007(E)
 Service Sire: AULDHOUSEBURN BOLT by SPORTSMANS A STAR BGS1702642(E)
 Service Details: AI'd 17/09/18

Full sister to Lot 389.

LLANGWM FLOCK

IOLO PRYS JONES

Reference to Sire:

STRATHBOGIE YA PATCH **IJS1600759(E)** **Born: 20/02/2016**
 Sire: MILLAR'S WINDBROOK by Knap Vital Spark CKP1400079(3)
 Dam: IJS1400616(E) by STRATHBOGIE UNTOUCHABLE IJS1300280(E)
 GDam: CUB1000051(2) by SPORTSMANS PASTERNAK BGS09010(1)
 GGDam: CUB07096(1) by DEN BURG 0388403647(2)

A sire that needs no introduction! Has done a tremendous job in both the Llangwm and Welsh flocks, he was the sire of the gimmer that won Champion RWAS 2018, and sire of 1st prize ewe lamb RWAS 2018. He was sire of 1st prize lamb ram and Male Champion RWAS 2017. His first crop of gimmers are very tight skinned long and solid.



STRATHBOGIE YA PATCH

Reference to Service Sire:

MILNBANK BRISBANE **LYM1803160(E1)** **Born: 17/03/2018**
 Sire: HOLYLEE ACROBAT by MILLAR'S WINDBROOK VMG1501215(E)
 Dam: LYM1401429(E) by TULLAGH SARACEN CJT1100211(E)
 GDam: LYM1100446(3) by MOSSKNOWE PUDSEY FWM09627(1)
 GGDam: LYM08577(E) by ETTRICK NO LIMITS GGH07098(E)

Milnbank Brisbane is a much admired lamb, purchased at Carlisle this year for 5500gns. One of the best carcased and skinned lambs seen this year. He is by Hollylee Acrobat Champion Lanark 2017 and his dam was the best Tullagh Saracen daughter at Milnbank when sold for 3800gns.



MILNBANK BRISBANE

393 LLANGWM**JLI1702016(2)****Born: 10/02/2017**

Sire: HALBEATH VIP ONH1400185(1) by MOSSKNOWE UNITED FWM1300123(E)
 Dam: JLI1400903(1) by KNOCK THE ONE HAK1200388(E)
 GDam: JLI1000020(2) by KELSO PICASSO MBZ09040(E)
 GGDam: JLI07018(E) by COWAL MONARCH OF THE GLEN CKC06213(E)
 Service Sire: MILNBANK BRISBANE by HOLYLEE ACROBAT PDV1710974(E)
 Service Details: AI'd 22/09/18

She is out of the best family in the flock, her dam has been the flocks show ewe for over three years, winning numerous Championships, and was a member of the Champion group of three RWAS 2018. She is sired by the consistent breeder Halbeath VIP.

394 LLANGWM**JLI1702131(4)****Born: 01/03/2017**

Sire: STRATHBOGIE YA PATCH IJS1600759(E) by MILLAR'S WINDBROOK VMG1501215(E)
 Dam: JLI1400963(3) by KNOCK THE ONE HAK1200388(E)
 GDam: JLI09051(2) by CENNEN MAGNUM TCA06089(2)
 GGDam: JLI07015(E) by CLYNNOG JOE TEX ODC03024(1)
 Service Sire: MILNBANK BRISBANE by HOLYLEE ACROBAT PDV1710974(E)
 Service Details: AI'd 22/09/18

Half sister to Champion RWAS 2018, she is sired by Strathbogie Ya Patch. Dam is sired by 7500gn Knock The One.

395 LLANGWM**JLI1702081(2)****Born: 16/03/2017**

Sire: STRATHBOGIE YA PATCH IJS1600759(E) by MILLAR'S WINDBROOK VMG1501215(E)
 Dam: JLI1401031(2) by LLANGWM TINY TEMPO JLI1200524(1)
 GDam: JLI1100216(2) by DOUGANHILL MC FLY GCK06073(1)
 GGDam: JLI08045(1) by CRAIGHEAD MASTERPIECE CMC06285(E)
 Service Sire: MILNBANK BRISBANE by HOLYLEE ACROBAT PDV1710974(E)
 Service Details: AI'd 22/09/18

396 LLANGWM**JLI1702073(2)****Born: 16/03/2017**

Sire: STRATHBOGIE YA PATCH IJS1600759(E) by MILLAR'S WINDBROOK VMG1501215(E)
 Dam: JLI1401031(2) by LLANGWM TINY TEMPO JLI1200524(1)
 GDam: JLI1100216(2) by DOUGANHILL MC FLY GCK06073(1)
 GGDam: JLI08045(1) by CRAIGHEAD MASTERPIECE CMC06285(E)
 Service Sire: MILNBANK BRISBANE by HOLYLEE ACROBAT PDV1710974(E)
 Service Details: AI'd 22/09/18

397 LLANGWM**JLI1702080(4)****Born: 17/03/2017**

Sire: LLANGWM YMCA JLI1601365(E) by BALTIER VAMPIRE FEB1400303(E)
 Dam: JLI1100220(3) by KELSO PICASSO MBZ09040(E)
 GDam: JLI06015(3) by CLYNNOG JOE TEX ODC03024(1)
 GGDam: JLI00001(2) by MUIRESK COMRADE MSK96010(N/A)
 Service Sire: MILNBANK BRISBANE by HOLYLEE ACROBAT PDV1710974(E)
 Service Details: AI'd 22/09/18

A gimmer with serious carcase, by Llangwm YMCA, who is brother to 30,000gn Llangwm Wario, sold to Procters Farms. Her dam is full sister to 32,000gn Llangwm Rocky.

398 Embryo Implanted 10/10/18*Breeding of Embryo:*

Dam: JLI1802417(E1) by STRATHBOGIE YA PATCH IJS1600759(E)

Sire: MILNBANK BRISBANE LYM1803160(E1) by HOLYLEE ACROBAT PDV1710974(E)

Dam of this embryo won 1st prize ewe lamb RWAS 2018, she is the best ewe lamb ever bred in the flock, full of character and power. She is sired by Strathbogie Ya Patch who has bred very well in the flock. Milnbank Brisbane (sire) has extreme carcase and skin. This is a very exciting pregnancy.



DAM OF EMBRYOS OF LOT 398

399 Embryo Implanted 27/09/18*Breeding of Embryo:*

Dam: JLI1100345(E) by KELSO PICASSO MBZ09040(E)

Sire: MILNBANK BRISBANE LYM1803160(E1) by HOLYLEE ACROBAT PDV1710974(E)

Dam of this embryo is the best breeding ewe in the flock, she is full sister to 32,000gn Llangwm Rocky. She is the dam of 1st prize ewe lamb RWAS 2018, 4500gn Llangwm Yellowstone, and 3600gn Milnbank Vorderman who has done well in both the Loosebeare and Whitehart flocks.

DOUGANHILL FLOCK

DOUGANHILL FARMS

Lots 400-409 are all Scrapie Monitored and Eligible for Export to Northern Ireland.

Reference to Service Sires:

PROCTERS ABRACADABRA PFD1701606(E) Born: 17/02/2017

Sire: TEIGLUM YOUNGGUN by TEIGLUM WINDFALL CFT1503945(E)
 Dam: PFD1500019(E) by TOPHILL UNION JACK HPH1300527(1)
 GDam: PFD1101343(2) by HADDO RINGLEADER KWJ1000063(2)
 GGDam: JKA06035(2) by BALTIER KING FEB04050(1)

Sired lambs to 7500gns.

GARNGOUR ALCAPONE CJN1704950(E) Born: 21/03/2017

Sire: KNOCK YARDSMAN by TOPHILL WALL ST HPH1500816(E)
 Dam: CJN1604416(E) by MOSSVALE WINSTON MAV1500787(2)
 GDam: CJN1504066(E) by CASTLECAIRN VAVAVOOM RNA1400593(3)
 GGDam: CJN1403159(E) by SPRINGWELL ULSTERBOY GRS1301242(E)

Purchased jointly for 12,000gns.

SPORTSMANS BOLLINGER BGS1803099(E1) Born: 16/02/2018

Sire: CLINTERTY YOGI BEAR by TOPHILL WALL ST HPH1500816(E)
 Dam: SLH1600108(E) by GLENSIDE VALHALLA FPG1400768(E)
 GDam: CKC1000215(E) by KELSO PAVAROTTI MBZ09002(E)
 GGDam: CKC04012(1) by ETTRICK JACKPOT GGH03082(1)

400 DOUGANHILL GCK1710056(E) Born: 28/02/2017

Sire: BALTIER YOURE THE ONE FEB1600395(E) by GARNGOUR UPPERCLASS CJN130222
 Dam: GCK1507070(3) by DOUGANHILL URASTAR GCK1304172(E)
 GDam: GCK1101061(2) by GARNGOUR RADICAL CJN1000026(2)
 GGDam: GCK080020(E) by HEXEL LEXUS MZH05195(2)
 Service Sire: GARNGOUR ALCAPONE by KNOCK YARDSMAN HAK1601070(E)
 Service Details: AI'd 19/09/18

401 DOUGANHILL GCK1710066(E) Born: 02/03/2017

Sire: BALTIER YOURE THE ONE FEB1600395(E) by GARNGOUR UPPERCLASS CJN130222
 Dam: GCK1406061(2) by CAIRNAM TAVISH GCF1201115(E)
 GDam: GCK1000004(2) by FACHELL PISTOL PETE MIF091126(E)
 GGDam: GCK05137(2) by CAMBWELL KIDD II LTC04145(2)
 Service Sire: SPORTSMANS BOLLINGER by CLINTERTY YOGI BEAR BBY1601064(E)
 Service Details: Served 22/10/18

402 DOUGANHILL GCK1710069(E) Born: 02/03/2017

Sire: BALTIER YOURE THE ONE FEB1600395(E) by GARNGOUR UPPERCLASS CJN130222
 Dam: GCK1304085(2) by CAIRNAM TAVISH GCF1201115(E)
 GDam: GCK1101111(2) by HADDO RAMBO KWJ1000062(2)
 GGDam: RHT07801(2) by DOUGANHILL MAGNUM GCK06072(2)
 Service Sire: GARNGOUR ALCAPONE by KNOCK YARDSMAN HAK1601070(E)
 Service Details: AI'd 19/09/18

- 403 DOUGANHILL GCK1710038(2) Born: 15/02/2017**
Sire: BALTIER YOURE THE ONE FEB1600395(E) by GARNGOUR UPPERCLASS CJN130222
Dam: GCK1507105(2) by DOUGANHILL URASTAR GCK1304172(E)
GDam: GCK1101121(2) by GARNGOUR RADICAL CJN1000026(2)
GGDam: GCK098309(3) by LAUDER NUGGET CLJ07175(1)
Service Sire: GARNGOUR ALCAPONE by KNOCK YARDSMAN HAK1601070(E)
Service Details: AI'd 19/09/18
- 404 DOUGANHILL GCK1710044(1) Born: 18/02/2017**
Sire: BALTIER YOURE THE ONE FEB1600395(E) by GARNGOUR UPPERCLASS CJN130222
Dam: GCK1304095(2) by HULL HOUSE SPECIAL BREW MJH1101250(1)
GDam: GCK080205(3) by HULL HOUSE HANKY PANKY MJH01237(1)
GGDam: GCK01107(3) by BALLAGLONNEY FAMOUS BLB99111(2)
Service Sire: SPORTSMANS BOLLINGER by CLINTERTY YOGI BEAR BBY1601064(E)
Service Details: Served 24/10/18
- 405 DOUGANHILL GCK1710088(2) Born: 04/03/2017**
Sire: LLANGWM WARIO JLI1501164(E) by BALTIER VAMPIRE FEB1400303(E)
Dam: GCK1507015(2) by TOPHILL UNION JACK HPH1300527(1)
GDam: GCK1304050(1) by CAIRNAM TAVISH GCF1201115(E)
GGDam: GCK1101141(E) by MILNBANK JERSEY DUDECK LYMO3077(E)
Service Sire: PROCTERS ABRACADABRA by TEIGLUM YOUNGGUN CFT1604569(E)
Service Details: AI'd 19/09/18
- 406 DOUGANHILL GCK1710129(3) Born: 18/03/2017**
Sire: LLANGWM WARIO JLI1501164(E) by BALTIER VAMPIRE FEB1400303(E)
Dam: GCK1203020(2) by HULL HOUSE SPECIAL BREW MJH1101250(1)
GDam: GCK080020(E) by HEXEL LEXUS MZH05195(2)
GGDam: GCK04084(2) by MILNBANK JERSEY DUDECK LYMO3077(E)
Service Sire: PROCTERS ABRACADABRA by TEIGLUM YOUNGGUN CFT1604569(E)
Service Details: AI'd 19/09/18
- 407 DOUGANHILL GCK1710187(3) Born: 09/04/2017**
Sire: LLANGWM WARIO JLI1501164(E) by BALTIER VAMPIRE FEB1400303(E)
Dam: GCK1507182(2) by DOUGANHILL URASTAR GCK1304172(E)
GDam: GCK1203125(E) by HULL HOUSE HANKY PANKY MJH01237(1)
GGDam: GCK07020(3) by HULL HOUSE MA MAN MJH06203(1)
Service Sire: GARNGOUR ALCAPONE by KNOCK YARDSMAN HAK1601070(E)
Service Details: AI'd 19/09/18
- 408 DOUGANHILL GCK1710098(3) Born: 04/03/2017**
Sire: LLANGWM WARIO JLI1501164(E) by BALTIER VAMPIRE FEB1400303(E)
Dam: GCK1507117(E) by GLENSIDE KING II FPG04308(1)
GDam: STU06022(1) by GLENSIDE LACHLAN FPG05101(1)
GGDam: STU03029(1) by KNOCK IDAHO HAK02035(2)
Service Sire: PROCTERS ABRACADABRA by TEIGLUM YOUNGGUN CFT1604569(E)
Service Details: AI'd 19/09/18
- 409 DOUGANHILL GCK1710016(2) Born: 13/02/2017**
Sire: LLANGWM WARIO JLI1501164(E) by BALTIER VAMPIRE FEB1400303(E)
Dam: GCK1507008(2) by TOPHILL UNION JACK HPH1300527(1)
GDam: GCK1304181(E) by DOUGANHILL MASTERPIECE GCK06016(E)
GGDam: GCK1000089(2) by GLENSIDE KING II FPG04308(1)
Service Sire: PROCTERS ABRACADABRA by TEIGLUM YOUNGGUN CFT1604569(E)
Service Details: AI'd 19/09/18

HALBEATH FLOCK

R & C ORR

Reference to Service Sires:

MIDLOCK YORKIE

WKM1618123(E)

Born: 20/03/2016

Sire: DEVERONVALE WARRIOR by MULLAN VIVALDI HBN1400934(E)
 Dam: WKM1309371(E) by TEIGLUM THUNDER CFT1201741(E)
 GDam: WKM1205983(E) by FOYLE VIEW SUPERSTAR SMV1100552(E)
 GGDam: WKM09072(2) by BALTIER OLYMPIC FEB08895(2)



MIDLOCK YORKIE

PEACEHAY YA BELTER

CFP1601450(E)

Born: 20/02/2016

Sire: SCROGTONHEAD U STOATER by FOYLE VIEW SUPERSTAR SMV1100552(E)
 Dam: CFP1300695(1) by SHEEOCH TARDIS BRQ1200178(1)
 GDam: CFP1100113(1) by DOUGANHILL LONESTAR GCK05067(1)
 GGDam: CFP09117(3) by CENNEN MAGNUM TCA06089(2)

Purchased for 23,000gns Worcester Sale 2017, with Langside and Meonside flocks.



PEACEHAY YA BELTER

HALBEATH VIP**ONH1400185(1)****Born: 01/02/2014**

Sire: MOSSKNOWE UNITED by HADDO RINGLEADER KWJ1000063(2)
 Dam: QEL1201597(1) by HULL HOUSE SPECIAL BREW MJH1101250(1)
 GDam: QEL08058(1) by SUMMERWOOD GRAND UNION PHS00001(2)
 GGDam: QEL06161(2) by KINGSLAND LION VPK05034(1)

A proven sire, progeny sold to 20,000gns with many more to five figures.



HALBEATH VIP

SILVERMERE BALTIC**HLN1800043(2)****Born: 18/02/2018**

Sire: STRATHBOGIE YES SIR by MILLAR'S WINDBROOK VMG1501215(E)
 Dam: LYM1401388(E) by STRATHBOGIE UNTOUCHABLE IJS1300280(E)
 GDam: LYM1100424(E) by GLENSIDE RAZZLE DAZZLE FPG1000055(E)
 GGDam: LYM08577(E) by ETTRICK NO LIMITS GGH07098(E)

Purchased for 17,000gns Lanark 2018, with the Garngour, Teiglum, Arkle and Ellen Valley flocks.



SILVERMERE BALTIC

410 HALBEATH ONH1700452(2) Born: 16/02/2017

Sire: MIDLOCK YORKIE WKM1618123(E) by DEVERONVALE WARRIOR MG1500768(1)
 Dam: ONH1500332(1) by HALBEATH VIP ONH1400185(1)
 GDam: ONH1100068(2) by CAIRNESS RED RUM DJV1000159(1)
 GGDam: ONH08360(2) by HALBEATH MAVERICK ONH06020(1)
 Service Sire: SILVERMERE BALTIC by STRATHBOGIE YES SIR IJS1600754(E)
 Service Details: AI'd 22/09/18

The flocks show gimmer at the GYS 2018, she has fantastic character.

411 HALBEATH ONH1700491(2) Born: 03/03/2017

Sire: HARTSIDE VOLT CSI1400656(E) by SPORTSMANS UNBEATABLE BGS1300814(E)
 Dam: ONH1400237(2) by CLAYBURY TEDDY DHL1200523(3)
 GDam: ONH1200093(3) by MILNBANK SEABIRD LYM1100425(E)
 GGDam: ONH1000012(3) by CASTLECAIRN OH MIGHTY RNA08435(E)
 Service Sire: PEACEHAY YA BELTER by SCROGTONHEAD U STOATER GLH1304107(1)
 Service Details: AI'd 22/09/18

412 HALBEATH ONH1700474(2) Born: 20/02/2017

Sire: MIDLOCK YORKIE WKM1618123(E) by DEVERONVALE WARRIOR MG1500768(1)
 Dam: ONH1200123(1) by CAIRNESS RED RUM DJV1000159(1)
 GDam: ONH08361(2) by HALBEATH MAVERICK ONH06020(1)
 GGDam: ONH05877(2) by HADDO KINGPIN KJW04427(E)
 Service Sire: PEACEHAY YA BELTER by SCROGTONHEAD U STOATER GLH1304107(1)
 Service Details: AI'd 22/09/18

Maternal brother was used in the flock as a lamb.

413 HALBEATH ONH1700454(E) Born: 18/02/2017

Sire: CAMBWELL TRADEMARK LTC1201161(3) by SPORTSMANS SUPREME BGS1100303(E)
 Dam: CKP1203263(E) by MILNBANK SOUND INVESTMENT LYM1100375(1)
 GDam: YSM080012(1) by HULL HOUSE NIJINSKY MJH07081(2)
 GGDam: GGH04152(E) by CLYNNOG JOE TEX ODC03024(1)
 Service Sire: PEACEHAY YA BELTER by SCROGTONHEAD U STOATER GLH1304107(1)
 Service Details: AI'd 22/09/18

Dam was purchased for 1300gns from the Knap Flock. Full sister to Halbeath Atom who won 2nd prize shearing GYS 2018.

414 HALBEATH ONH1700512(1) Born: 25/03/2017

Sire: HARTSIDE VOLT CSI1400656(E) by SPORTSMANS UNBEATABLE BGS1300814(E)
 Dam: REW1203183(2) by LOOSEBEARE OH EWE STAR QEL08249(2)
 GDam: REW09015(2) by CASTLECAIRN KARMA MAN RNA04319(E)
 GGDam: REW05026(1) by GOLDIES GODFATHER GJG00036(3)
 Service Sire: HALBEATH VIP by MOSSKNOWE UNITED FWM1300123(E)
 Service Details: AI'd 22/09/18

Dam was purchased for 1600gns from the Brijon Flock.

415 HALBEATH ONH1700514(2) Born: 29/03/2017

Sire: HARTSIDE VOLT CSI1400656(E) by SPORTSMANS UNBEATABLE BGS1300814(E)
 Dam: REW1203232(2) by LOOSEBEARE OH EWE STAR QEL08249(2)
 GDam: REW08102(1) by CROFT LEXUS HRC05031(1)
 GGDam: REW05027(3) by GOLDIES GODFATHER GJG00036(3)
 Service Sire: HALBEATH VIP by MOSSKNOWE UNITED FWM1300123(E)
 Service Details: AI'd 22/09/18

Dam was purchased for 2500gns from the Brijon Flock.

- 416 HALBEATH ONH1700485(2) Born: 01/03/2017**
Sire: HARTSIDE VOLT CSI1400656(E) by SPORTSMANS UNBEATABLE BGS1300814(E)
Dam: BBY1300562(1) by MELLOR VALE TEMPTATION BCM1200149(E)
GDam: BBY1000038(2) by CLINTERTY PAR ONE BBY09643(2)
GGDam: BBY02054(2) by MILNBANK HITMAN LYM01024(E)
Service Sire: SILVERMERE BALTIC by STRATHBOGIE YES SIR IJS1600754(E)
Service Details: AI'd 22/09/18
- 417 HALBEATH ONH1700457(3) Born: 18/02/2017**
Sire: HALBEATH VIP ONH1400185(1) by MOSSKNOWE UNITED FWM1300123(E)
Dam: ONH1500339(3) by HARTSIDE VOLT CSI1400656(E)
GDam: ONH1300164(2) by TEIGLUM TOPPER CFT1201766(1)
GGDam: ONH08360(2) by HALBEATH MAVERICK ONH06020(1)
Service Sire: PEACEHAY YA BELTER by SCROGTONHEAD U STOATER GLH1304107(1)
Service Details: AI'd 22/09/18
- 418 HALBEATH ONH1700489(3) Born: 03/03/2017**
Sire: HARTSIDE VOLT CSI1400656(E) by SPORTSMANS UNBEATABLE BGS1300814(E)
Dam: ONH1300135(2) by TEIGLUM TOPPER CFT1201766(1)
GDam: JMK1100225(E) by TAMNAMONEY RINGO STARR SRY1000061(2)
GGDam: ONH05768(1) by HADDO KINGPIN KWJ04427(E)
Service Sire: PEACEHAY YA BELTER by SCROGTONHEAD U STOATER GLH1304107(1)
Service Details: AI'd 22/09/18
- 419 HALBEATH ONH1700513(2) Born: 26/03/2017**
Sire: MIDLOCK YORKIE WKM1618123(E) by DEVERONVALE WARRIOR MGV1500768(1)
Dam: ONH1400195(3) by LANGSIDE ROLEX GAL1000114(3)
GDam: CNT1200541(1) by TEVIOT ROCKET RBT1000011(1)
GGDam: SCE09087(1) by GROUGFOOT OYADANCER MDG08659(E)
Service Sire: PEACEHAY YA BELTER by SCROGTONHEAD U STOATER GLH1304107(1)
Service Details: AI'd 22/09/18

CRAILLOCH FLOCK

A MCCOLM

Lots 420- 428 are all Scrapie Monitored and have been Toxo and Enzo Vaccinated and are all on the Heptavac P System.

Reference to Service Sires:

GARNGOUR ALEXANDER **CJN1704947(E)** **Born: 21/03/2017**
 Sire: KNOCK YARDSMAN by TOPHILL WALL ST HPH1500816(E)
 Dam: CJN1604416(E) by MOSSVALE WINSTON MAV1500787(2)
 GDam: CJN1504066(E) by CASTLECAIRN VAVAVOOM RNA1400593(3)
 GGDam: CJN1403159(E) by SPRINGWELL ULSTERBOY GRS1301242(E)

Full brother to 40,000gn Garngour Alabama, he has bred really well in his first year and won Champion stock ram at Solway & Tyne Flock Competition 2017.



GARNGOUR ALEXANDER

SCOTSMAN BULLSEYE **XSS1800114(E2)** **Born: 22/02/2018**
 Sire: DUNCRYNE UBER COOL by BALTIER THUNDERBIRD FEB1200211(1)
 Dam: XSS1500063(E) by OBERSTOWN USAIN BOLT E.PFI1300026(E)
 GDam: HAK1200360(E) by SPORTSMANS SUPREME BGS1100303(E)
 GGDam: HAK08959(E) by GARNGOUR NOBLEMAN CJN07610(2)

Won Reserve Champion and purchased jointly at Worcester for 7000gns. A huge lamb with a tremendous top and carcase.



SCOTSMAN BULLSEYE

420 CRAILLOCH MAE1702104(E) Born: 03/02/2017

Sire: OBERSTOWN USAIN BOLT E.PF1300026(E) by KELSO PAVAROTTI MBZ09002(E)
Dam: MG1200286(E) by GLENSIDE RAZZLE DAZZLE FPG1000055(E)
GDam: HAK08873(E) by TOPHILL NOCKOUT HPH07805(2)
GGDam: HAK01011(3) by MUIRESK GRAND SLAM MSK00034(E)
Service Sire: SCOTSMAN BULLSEYE by DUNCRYNE UBER COOL JRV1300796(1)
Service Details: A1'd 18/09/18

Shown at the RHS 2018. Two full sisters have been exported to Germany.

421 CRAILLOCH MAE1702156(1) Born: 22/02/2017

Sire: CLINTERTY YORKIE BBY1601062(1) by TOPHILL WALL ST HPH1500816(E)
Dam: MAE1401464(2) by CAMBWELL UNION LTC1301542(E)
GDam: MAE1000088(2) by STRATHMOR ORIONS STAR TGF08463(2)
GGDam: MAE06672(2) by GOLDIES LIVEWIRE GJG05183(2)
Service Sire: GARNGOUR ALEXANDER by KNOCK YARDSMAN HAK1601070(E)
Service Details: Served 05/10/18

Shown at the RHS 2018.

422 CRAILLOCH MAE1702161(2) Born: 25/02/2017

Sire: CLINTERTY YORKIE BBY1601062(1) by TOPHILL WALL ST HPH1500816(E)
Dam: MAE1100593(2) by ANNAN OKAY DOKEY JKA08020(E)
GDam: MAE07710(2) by GLENSIDE KING II FPG04308(1)
GGDam: MAE04856(2) by CREWBURN JUST THE JOB HBC03046(1)
Service Sire: GARNGOUR ALEXANDER by KNOCK YARDSMAN HAK1601070(E)
Service Details: Served 10/10/18

Dam bred Reserve Male Champion RHS 2016

423 CRAILLOCH MAE1702166(3) Born: 01/03/2017

Sire: CLINTERTY YORKIE BBY1601062(1) by TOPHILL WALL ST HPH1500816(E)
Dam: MAE1301363(1) by CAMBWELL SPARKY LTC1100524(E)
GDam: MAE1000080(2) by CRAILLOCH MCCOIST MAE06607(2)
GGDam: MAE07728(1) by COWAL KIDNAPPER CKC04219(E)
Service Sire: SCOTSMAN BULLSEYE by DUNCRYNE UBER COOL JRV1300796(1)
Service Details: A1'd 18/09/18

424 CRAILLOCH MAE1702091(3) Born: 01/02/2017

Sire: PROCTERS WILDCARD PFD1500038(E) by SCROGTONHEAD U STOATER GLH130410
Dam: MAE1501636(2) by CRAILLOCH UK MAE1301338(E)
GDam: MAE1100594(2) by CRAILLOCH ROLLERCOASTER MAE1000015(2)
GGDam: MAE07728(1) by COWAL KIDNAPPER CKC04219(E)
Service Sire: GARNGOUR ALEXANDER by KNOCK YARDSMAN HAK1601070(E)
Service Details: Served 05/10/18

425 CRAILLOCH MAE1702159(2) Born: 24/02/2017

Sire: CLINTERTY YORKIE BBY1601062(1) by TOPHILL WALL ST HPH1500816(E)
Dam: MAE1301334(E) by ETTRICK EMPEROR GGH98091(3)
GDam: MAE1000080(2) by CRAILLOCH MCCOIST MAE06607(2)
GGDam: MAE07728(1) by COWAL KIDNAPPER CKC04219(E)
Service Sire: SCOTSMAN BULLSEYE by DUNCRYNE UBER COOL JRV1300796(1)
Service Details: A1'd 18/09/18

426 CRAILLOCH**MAE1702146(1)****Born: 14/02/2017**

Sire: CLINTERTY YORKIE BBY1601062(1) by TOPHILL WALL ST HPH1500816(E)
 Dam: MAE1401485(2) by CRAILLOCH UK MAE1301338(E)
 GDam: MAE1200628(E) by LIVERY PREDATOR VTLO9922(E)
 GGDam: MAE083978(1) by GLENSIDE KING II FPG04308(1)
 Service Sire: SCOTSMAN BULLSEYE by DUNCRYNE UBER COOL JRV1300796(1)
 Service Details: AI'd 18/09/18

427 CRAILLOCH**MAE1702132(2)****Born: 08/02/2017**

Sire: CLINTERTY YORKIE BBY1601062(1) by TOPHILL WALL ST HPH1500816(E)
 Dam: MAE1301332(E) by ETTRICK EMPEROR GGH98091(3)
 GDam: MAE1000080(2) by CRAILLOCH MCCOIST MAE06607(2)
 GGDam: MAE07728(1) by COWAL KIDNAPPER CKC04219(E)
 Service Sire: SCOTSMAN BULLSEYE by DUNCRYNE UBER COOL JRV1300796(1)
 Service Details: AI'd 18/09/18

428 CRAILLOCH**MAE1702131(E)****Born: 06/02/2017**

Sire: CLINTERTY YORKIE BBY1601062(1) by TOPHILL WALL ST HPH1500816(E)
 Dam: MAE1501651(2) by CRAILLOCH UK MAE1301338(E)
 GDam: MAE1200631(2) by CAMB WELL SPARKY LTC1100524(E)
 GGDam: MAE1000080(2) by CRAILLOCH MCCOIST MAE06607(2)
 Service Sire: SCOTSMAN BULLSEYE by DUNCRYNE UBER COOL JRV1300796(1)
 Service Details: AI'd 18/09/18

429 WITHDRAWN

TARFF

*Scotland's Oldest Agricultural Co-operative***Blends, Compounds & Straights | Fertiliser****Animal Health & Equipment | Liquid & Moist feeds****Drainage | Grass & Cereal Seeds | Dairy Chemicals****& much more!**

**PREMIUM QUALITY
BLENDED FEED**

Introducing the 'Rosette' Range!**Designed with Pedigree Cattle and Sheep Breeders in Mind**

tarffvalley.co.uk | Shed 29, Brampton Road, Longtown, CA6 5TR | 01228 792244

PLASUCHA FLOCK

R BENNETT

The Plasucha flock won Champion Flock and Champion gimmers Shropshire & Borders Texel Club Flock Competition 2018.

Lots 430-439 have been vaccinated against abortion and are all on the Heptavac P System.

Reference to Sires:

KNOCK YANKEE HAK1601045(3) Born: 19/02/2016

Sire: TOPHILL WALL ST by PROCTERS VENTURA PFD1403565(E)
 Dam: LTC1301593(1) by CAMBWELL TRADEMARK LTC1201161(3)
 GDam: LTC083152(2) by CAMBWELL LAIRD LTC05507(2)
 GGDam: LTC02032(1) by CAMBWELL HERO 2ND LTC01082(E)

Purchased jointly for 30,000gns in 2016. Sire of 11,000gn Plasucha All Star, gsire of 32,000gn Plasucha Big Gun. Daughters have bred rams to 20,000gns for Plasucha Bossman.

EDEN VALLEY WIZ KID WEV1500437(2) Born: 13/02/2015

Sire: SPORTSMANS TREMENDOUS II by MILNBANK SPECIAL ONE LYM1100405(1)
 Dam: WEV1200121(E) by DEVERONVALE PERFECTION MGVO9436(E)
 GDam: WPS1000076(E) by KNOCK OYSTER HAK08905(2)
 GGDam: WPS00051(2) by EARNSHAW FINESSE MOJ99011(1)

A proven breeder of both rams and females. Sons have sold to 15,000gns, 6000gns and many more. He has also sired 18,000gn Champion Female Lanark 2018.

Reference to Service Sires:

KELSO WISEMAN MBZ1501256(1) Born: 25/02/2015

Sire: KELSO VAN HOOLIGAN by KELSO UZI MBZ1300800(2)
 Dam: MBZ09010(E) by MELLOR VALE OFFICER BCM08023(E)
 GDam: FPG05151(2) by CASTLECAIRN KELTIC STAR RNA04375(1)
 GGDam: FPG03122(2) by CLAYBURY ISTABRAQ DHL02065(E)

Sons have sold for 4000gns and 2800gns. Daughters have sold for 12,000gns and 10,000gns. Dam bred 32,000gn Plasucha Big Gun was Kelso Wiseman daughter.

MULLAN AWESOME HBN1701494(E) Born: 14/02/2017

Sire: GLENSIDE WILLIE WINKIE by CORNMORE VELVET JACKET LTE1400381(E)
 Dam: HKP1300425(1) by HADD0 RINGLEADER KWJ1000063(2)
 GDam: CJT1100259(2) by CLOUGHER PHYSICAL CVC09048(2)
 GGDam: CJT05080(1) by BALTIER JUST LOOK FEB03015(3)

Sons have sold to 20,000gns and 4000gns in his first season.

PLASUCHA ALL STAR BFE1707062(E) Born: 28/02/2017

Sire: KNOCK YANKEE HAK1601045(3) by TOPHILL WALL ST HPH1500816(E)
 Dam: BFE1303103(E) by CONNACHAN SHARKY YSM1101560(E)
 GDam: YWM1200048(E) by GYRHOS RAMBO RUJ1000019(E)
 GGDam: YWM09001(E) by MELLOR VALE MASTERPIECE BCM06007(E)

Sired 32,000gn Plasucha Big Gun. Daughters won 2nd and 3rd prize ewe lambs RWAS 2018.

DONRHO ARISTOCRAT DNN1791279(E) Born: 06/02/2017

Sire: MILNBANK WOMANISER by GLENSIDE VALHALLA FPG1400768(E)
 Dam: DNN1500511(1) by KNAP VITAL SPARK CKP1400079(3)
 GDam: YMK1300261(3) by GLENSIDE TOPGUN FPG1200411(1)
 GGDam: YMK091239(2) by FAIRYWATER OLYMPIC STAR FAO08386(2)

Sold for 4000gns as a lamb Lanark 2017. A son of Aristocrat has been purchased this year.

430 PLASUCHA**BFE1707085(E)****Born: 01/03/2017**

Sire: EDEN VALLEY WIZ KID WEV1500437(2) by SPORTSMANS TREMENDOUS II BGS1200
 Dam: BFE1505003(E) by GARNGOUR UPPERCLASS CJN1302220(E)
 GDam: BFE1200055(E) by KINGLEDORIS SCARAMOUCHE WRK1100057(E)
 GGDam: BFE1000030(2) by SKIDDAW MAGIC RPS06003(E)

EBVs:	Litter Size	8 Wk Wgt	Maternal	Scan Wgt	Musc Dpth	Fat Dpth	CT	Gigot	Musc	Index
	0.10	5.47 kgs	0.58kgs	10.39 kgs	3.14 mm	0.52 mm	5.32mm			372
Accuracy	52%	75%	33%	81%	75%	79%	67%			80%

Service Sire: PLASUCHA ALL STAR by KNOCK YANKEE HAK1601045(3)

Service Details: Details at time of sale.

Reserve Texel Champion Shropshire County Show 2018, ET sister to 18,000gn Plasucha Aly's. Dam is ET sister to retained stock ram Plasucha Vavavoom who bred progeny to 6500gns. Gdam Plasucha Tutu won 2nd prize aged ewe RWAS 2015. 3dam won Reserve Female Champion RWAS 2013.



PLASUCHA ALYS - ET SISTER TO LOT 430

431 PLASUCHA**BFE1707018(E)****Born: 26/02/2017**

Sire: EDEN VALLEY WIZ KID WEV1500437(2) by SPORTSMANS TREMENDOUS II BGS1200
 Dam: BFE1505043(E) by FAIRYWATER VALIANT FAO1400542(E)
 GDam: YSM1101555(E) by BALTIER RASCAL I FEB1000027(2)
 GGDam: YSM090056(E) by ETTRICK NO LIMITS GGH07098(E)

EBVs:	Litter Size	8 Wk Wgt	Maternal	Scan Wgt	Musc Dpth	Fat Dpth	CT	Gigot	Musc	Index
	0.06	5.28 kgs	0.27kgs	9.54 kgs	3.45 mm	0.01 mm	5.13mm			367
Accuracy	51%	70%	31%	76%	69%	73%	63%			74%

Service Sire: DONRHO ARISTOCRAT by MILNBANK WOMANISER LYM1601783(E)

Service Details: Details at time of sale.

One of the flocks show gimmers this year. She won 1st prize group of three SBTC Progeny Show 2017. ET sister to 2200gn Plasucha All Rounder. Dam is ET Sister to 3200gn Plasucha Will-I-Am and is maternal sister to 10,000gn Plasucha All in One.

432 PLASUCHA**BFE1707086(E)****Born: 01/03/2017**

Sire: EDEN VALLEY WIZ KID WEV1500437(2) by SPORTSMANS TREMENDOUS II BGS1200
 Dam: BFE1303111(E) by CONNACHAN SHARKY YSM1101560(E)
 GDam: BFE1000026(1) by PENPARC NOBLEMAN SJP07056(1)
 GGDam: EKR07754(1) by ALLANFAULD MACKINTOSH XMM06021(E)
 Service Sire: KELSO WISEMAN by KELSO VAN HOOLIGAN MBZ1401065(2)
 Service Details: At time of sale.

ET sister to Plasucha Annabelle 1st prize gimmer GYS 2018. ET sister to 6000gns Plasucha Action Man.



PLASUCHA ANNABELLE – ET SISTER TO
LOT 434

433 PLASUCHA**BFE1707048(E)****Born: 28/02/2017**

Sire: EDEN VALLEY WIZ KID WEV1500437(2) by SPORTSMANS TREMENDOUS II BGS1200
 Dam: BFE1505068(E) by FAIRYWATER VALIANT FAO1400542(E)
 GDam: YSM1101555(E) by BALTIER RASCAL I FEB1000027(2)
 GGDam: YSM090056(E) by ETTRICK NO LIMITS GGH07098(E)
 Service Sire: MULLAN AWESOME by GLENSIDE WILLIE WINKIE FPG1501071(2)
 Service Details: At time of sale.

Dam is ET sister to 3200gn Plasucha Will-H-Am and is maternal sister to 10,000gn Plasucha All In One.

434 PLASUCHA**BFE1707007(E)****Born: 25/02/2017**

Sire: EDEN VALLEY WIZ KID WEV1500437(2) by SPORTSMANS TREMENDOUS II BGS1200
 Dam: BFE1505043(E) by FAIRYWATER VALIANT FAO1400542(E)
 GDam: YSM1101555(E) by BALTIER RASCAL I FEB1000027(2)
 GGDam: YSM090056(E) by ETTRICK NO LIMITS GGH07098(E)
 Service Sire: MULLAN AWESOME by GLENSIDE WILLIE WINKIE FPG1501071(2)
 Service Details: At time of sale.

ET sister to 2200gn Plasucha All Rounder. Gdam bred 10,000gn Plasucha All in One.

435 PLASUCHA**BFE1707066(E)****Born: 28/02/2017**

Sire: EDEN VALLEY WIZ KID WEV1500437(2) by SPORTSMANS TREMENDOUS II BGS1200
 Dam: BFE1404277(E) by GARNGOUR UPPERCLASS CJN1302220(E)
 GDam: CFT096677(2) by KILTARIFF OSPREY BBK08071(3)
 GGDam: CFT07786(2) by TAMNAMONEY LYNBROOK SRY05056(1)
 Service Sire: MULLAN AWESOME by GLENSIDE WILLIE WINKIE FPG1501071(2)
 Service Details: At time of sale.

ET sister to 3000gn gimmer sold Lanark 2018. Dam is maternal sister to 8000gn Kingledores Scaramouche.

436 PLASUCHA**BFE1707022(E)****Born: 26/02/2017**

Sire: KNOCK YANKEE HAK1601045(3) by TOPHILL WALL ST HPH1500816(E)
 Dam: BFE1303103(E) by CONNACHAN SHARKY YSM1101560(E)
 GDam: YWM1200048(E) by GYRHOS RAMBO RUJ1000019(E)
 GGDam: YWM09001(E) by MELLOR VALE MASTERPIECE BCM06007(E)
 Service Sire: MULLAN AWESOME by GLENSIDE WILLIE WINKIE FPG1501071(2)
 Service Details: At time of sale.

ET Sister To 11,000gn Plasucha All Star



PLASUCHA ALL STAR - ET BROTHER OF LOT 436

437 PLASUCHA**BFE1707038(E)****Born: 27/02/2017**

Sire: EDEN VALLEY WIZ KID WEV1500437(2) by SPORTSMANS TREMENDOUS II BGS1200
 Dam: BFE1505003(E) by GARNGOUR UPPERCLASS CJN1302220(E)
 GDam: BFE1200055(E) by KINGLEDORES SCARAMOUCHE WRK1100057(E)
 GGDam: BFE1000030(2) by SKIDDAW MAGIC RPS06003(E)

EBVs:	Litter Size	8 Wk Wgt	Maternal	Scan Wgt	Musc Dpth	Fat Dpth	CT	Gigot	Musc	Index
	0.10	4.79 kgs	0.58kgs	9.77 kgs	2.05 mm	0.31 mm	5.25mm		328	
Accuracy	52%	70%	33%	76%	70%	74%	63%		75%	

Service Sire: MULLAN AWESOME by GLENSIDE WILLIE WINKIE FPG1501071(2)
 Service Details: At time of sale.

ET sister to 18,000gn Plasucha Alys.



PLASUCHA ALYS - ET SISTER OF LOT 437

438 PLASUCHA**BFE1707094(E)****Born: 01/03/2017**

Sire: EDEN VALLEY WIZ KID WEV1500437(2) by SPORTSMANS TREMENDOUS II BGS1200
 Dam: BFE1404281(E) by SPORTSMANS TROJAN II BGS1200587(E)
 GDam: YSM1101555(E) by BALTIER RASCAL I FEB1000027(2)
 GGDam: YSM090056(E) by ETTRICK NO LIMITS GGH07098(E)
 Service Sire: MULLAN AWESOME by GLENSIDE WILLIE WINKIE FPG1501071(2)
 Service Details: At time of sale.

Dam's ET sister sold to 2000gns. Gdam bred 10,000gn Plasucha All in One.

439 PLASUCHA**BFE1707050(E)****Born: 28/02/2017**

Sire: KNOCK YANKEE HAK1601045(3) by TOPHILL WALL ST HPH1500816(E)
 Dam: BFE1404254(2) by GARNGOUR UPPERCLASS CJN1302220(E)
 GDam: SJP09193(E) by ANNAN JEWEL JKA03038(1)
 GGDam: FPG04348(2) by GLENSIDE HIS NIBS FPG01001(2)
 Service Sire: MULLAN AWESOME by GLENSIDE WILLIE WINKIE FPG1501071(2)
 Service Details: At time of sale.

ET sister to 1000gn Plasucha A1.

Quality Livestock Nutrition



As used by Eden Valley Texels

M: 07732775237

T: 01833 628479

E: tim@bridgedalesnutrition.co.uk

W: www.bridgedalesnutrition.co.uk

Minerals
Vitamins
Proteins



WELSH FLOCK

S & T EVANS

We feel very honoured to be returning with sheep to this prestigious sale. Over the years the Welsh flock has been developing an excellent reputation by using top breeding family lines and outstanding sires focusing on breed characteristics, good skins and carcasses and sheep with that extra something, the WOW factor!

It has been an amazing 2018 for us all at Welsh Pedigrees with the highlight being taking the Champion Texel at the Royal Welsh Show. Since the show we have sold many females privately and because of that we have decided to bring only ewe lambs this year and a very special embryo!

The 2017 Twilight sale was another great sale for Welsh females with ewe lambs hitting 1300gns. We have made no secret that we bring our best ewe lambs and this is shown by the success that our ewe lambs go on to achieve in their new flocks. You never know you may be purchasing for yourself the next Royal Welsh Champion!

We hope that all potential purchasers will have a successful and enjoyable day and we look forward to meeting both previous and new purchasers!

Tomos Evans

440 WELSH ESW1801065(E2) Born: 24/02/2018

Sire: BALTIER VAMPIRE FEB1400303(E) by BALTIER THUNDERBIRD FEB1200211(1)
 Dam: FAO1600836(E) by FAIRYWATER VALIANT FAO1400542(E)
 GDam: FAO1300446(E) by GLENSIDE RAZZLE DAZZLE FPG1000055(E)
 GGDam: FAO1000035(E) by CORNERSTONE ISAAC SID02004(2)

Once again we have another outstanding ewe lamb to offer. She carries the genetics and the presence to be an asset in any flock. Her dam was purchased at Lanark for 2400gns where she was much admired. Her sire needs no introduction and has left a terrific crop of ewe lambs this year.

441 WELSH ESW1801095(E1) Born: 24/03/2018

Sire: STRATHBOGIE YA PATCH IJS1600759(E) by MILLAR'S WINDBROOK VMG1501215(E)
 Dam: ESW1300273(E) by MOSSKNOWE PUDSEY FWM09627(1)
 GDam: BMZ09642(2) by SWAITES O SULLIVAN AJS080521(2)
 GGDam: BMZ06352(2) by CAMBWELL KRUGAR LTC04129(2)

Your chance to secure another Royal Welsh Champion, and this is the only Strathbogie Ya Patch ewe lamb we are offering. This ewe lamb is out of the retained sister to the ewe sold for 7000gns to the Sportsmans flock. She is a lamb that has inherited the flocks best bloodlines and could be a star in her own right.

442 WELSH ESW1801051(E2) Born: 15/02/2018

Scrapie Genotype: Scrapie Plan ARR/ARR (Private)

Sire: ERYRI VAN DANGO ORE1406619(E) by MULLAN TIN TIN HBN1200560(E)
 Dam: ESW1400324(2) by WESTER MOY UTOPIA CHI1301755(E)
 GDam: JLI1000091(2) by MATTHEWS ONE AND ONLY RMF081417(1)
 GGDam: JLI06162(2) by MILLAR'S LEVEN THOUSAND VMG05039(2)

Member of this years show team, she won 6th prize RWAS with her sister 5th prize, who was later sold at the Solway & Tyne Club Sale where she was top price ewe lamb. She is by Eryri Van Dango who is one of the flocks most consistent breeders in the Welsh flock.



LOT 442

443 WELSH**ESW1801075(E1)****Born: 23/02/2018**

Sire: ERYRI VAN DANGO ORE1406619(E) by MULLAN TIN TIN HBN1200560(E)
 Dam: AFO1300010(E) by DOUGANHILL MC FLY GCK06073(1)
 GDam: GGH1101166(1) by ETTRICK RAINBOW WARRIOR GGH1000041(E)
 GGDam: GGH07213(2) by THINACRES MASAMBULA FTT06493(2)

A good carcased lamb out of the much admired Foxhillfarm ewe that was purchased jointly with the Llangwm Flock.

444 WELSH**ESW1801062(E1)****Born: 02/02/2018**

Sire: ERYRI VAN DANGO ORE1406619(E) by MULLAN TIN TIN HBN1200560(E)
 Dam: ESW1200135(E) by GLENSIDE FORSYTH FPG99099(1)
 GDam: JKA04060(E) by CLYNNOG JOE TEX ODC03024(1)
 GGDam: JKA98207(2) by CRAIGHEAD DYNAMITE CMC97090(2)

A lovely lamb which always catches your eye, she is by the flocks homebred Glenside ewe that has consistently bred lovely daughters, selling most notably privately to the Mullan flock.

445 WELSH**ESW1801055(E1)****Born: 16/02/2018**

Sire: CAIRNESS RANGER DJV1000110(E) by DEVERONVALE PERFECTION MGVO9436(E)
 Dam: LAF1500321(E) by GARNGOUR VINTAGE CJN1403170(E)
 GDam: LAF1200149(E) by DOUGANHILL MC FLY GCK06073(1)
 GGDam: LAF090276(E) by TOPHILL NOCKOUT HPH07805(2)

This is something a bit different, a really sparky and cocky gimmer who always catches the eye, she is by Cairness Ranger who has done a great job in the Welsh flock.

446 Embryo Implanted 16/10/18*Breeding of Embryo:*

Dam: ESW1700887(E) by STRATHBOGIE YA PATCH IJS1600759(E)

Sire: MILNBANK BRISBANE LYM1803160(E1) by HOLYLEE ACROBAT PDV1710974(E)

This embryo could be something special. The dam of this embryo is Welsh Queen, Champion RWAS 2018. The sire of this embryo is Milnbank Brisbane who was purchased for 5500gns Carlisle 2018. This embryo would be an asset to any established or new breeder. We hope we are selling another Show Champion.


DAM OF EMBRYO OF LOT 446

HEALTH AND SAFETY RULES HARRISON & HETHERINGTON LIMITED NOTICE TO ALL VISITORS AND TRADERS PLEASE READ AND OBSERVE THE FOLLOWING

All visitors and traders on site will be responsible for ensuring that they and their employees or sub-contractors engaged by them comply with all legal requirements, including the Health and Safety At Work etc., Act 1974, The Management of Health and Safety At Work Regulations, The Provision And Use of Work Equipment Regulations, etc.

All visitors and traders will be responsible for ensuring that their operations in no way affect the integrity of the company or its fire, safety or security arrangements and in no way compromise the health and safety and welfare of other visitors to and or employees of Harrison & Hetherington.

Although it is the visitors and traders responsibility to ensure that plant, equipment and systems in work are safe, Harrison & Hetherington Limited reserve the right to ask any visitor or trader to leave the market for any breaches in the Health and Safety Rules and/or Regulations.

Vendors must inform Harrison & Hetherington Limited of any livestock due to attend the market whose temperament, behaviour or condition may call for additional precautions for its safe handling.

When loading or unloading livestock handlers must ensure that the dock and vehicle gates are securely fixed so as to prevent the escape of animals.

Traders are responsible for providing and maintaining suitable livestock handling equipment. They should ensure that livestock handlers are fit, experienced in livestock handling and familiar with the livestock in their charge.

Children must not be permitted in any area where they may be at risk from livestock or machinery.

In the case of bulls, during the period when the show/sale is open to visitors, bulls in stalls or pens should not be left unattended. If the handler is temporarily absent, arrangements should be made with another vendor, steward or member of Harrison & Hetherington staff to oversee the bull until the handler returns.

Handling of Livestock at shows and sales: Harrison & Hetherington Limited recommend that an adult person should accompany any junior person during the showing/sale of livestock in the ring and reserves the right to intervene at any point if, in the company's opinion, the person showing the livestock is at risk in undertaking that activity.

Passageways must be kept clear at all times during the auction sale. **PLEASE DO NOT STAND IN THE SALE RING ENTRANCE AND EXIT PASSAGES.**

The auction ring man escapes and refuges must be kept clear at all times.

All portable electrical equipment supplied and/or used by visitors and traders must be safe and fit for the purpose and should have a valid portable appliance test certificate.

AUCTIONEER'S TERMS & CONDITIONS OF SALE

(Incorporating the Auctioneer's
Terms and Conditions)

1. The biddings to be regulated by the Auctioneers and the highest bidder, subject to the Vendor's reserve (if any), to be the purchaser. No bid shall be retracted and if any dispute should arise between two or more bidders, the Lot in dispute to be put up again and resold, or the Auctioneers may determine the dispute at their own discretion and their decision shall be final. The Auctioneers reserve the right to refuse the bid of any person without being called upon to give reason for such action.
2. The Purchaser to give his full name and dwelling place and pay for all Lots purchased immediately at the close of sale. No Lot or Lots shall be removed from the sale premises until paid for and a pass-out slip obtained from the Auctioneer's clerk but each and every Lot shall immediately at the fall of the hammer be considered as delivered and be and remain in every respect at the absolute risk and expense of the respective purchaser or purchasers thereof and shall be removed from the sale premises at the purchaser's expense. The right of property shall not pass until the full purchase price is paid.
3. Purchasers paying by cheque must be prepared, if required, to produce a banker's reference. As a result of the Money Laundering Regulations (2003) the auctioneers are unable to accept cash payments in excess of nine thousand pounds sterling for any single or linked purchase transaction.
4. All statements in the catalogue, or made by the Auctioneers at the time of sale, also the correct identification of the animals, are the entire responsibility of the Vendors. The Auctioneers take no personal responsibility for the correctness of such statements or identities.
5. All statements in the catalogue, or any made by the Auctioneers at the time of sale relating to any veterinary or other tests are to be taken as statements of fact only. No such statements shall guarantee the purchaser of any animal against loss arising from the subsequent reaction of such animal to any test administered after the sale and the Vendors shall not be liable in any way should this occur.
6. All stock is sold subject to the Conditions of Sale recommended for use at markets by the Livestock Auctioneers' Markets Committee for England and Wales except in so far as these conflict with any Special Conditions applicable to the sale of pedigree stock, when the latter Conditions shall prevail.
7. Neither the Vendors nor the Auctioneers will be responsible for any accident or injury to persons or property, through fire or any other cause whatsoever, nor for any damage by animals prior to, during or after the sale.
8. No undertaking by the Auctioneers or their servants to take charge of any Lot or Lots after the sale or to forward them to their destination shall be held to impose upon the Auctioneers any legal obligation or vitiate any of these Conditions.
9. Inasmuch as the Auctioneers act as agents for a disclosed principal they shall not be considered personally responsible for any default on the part of either purchasers or Vendors and the remedy shall be against them only and not against the Auctioneers.
10. If these conditions are unfulfilled, the Vendors or Auctioneers shall have the power to resell the Lots, retaining any surplus and charging any deficiency and expense to the defaulter.
11. You have a right to know how we will use the information you have provided to us. We may share the information with other members of our group and may make this information available to relevant media groups and other interested parties on request. We and other members of the group may contact you by telephone, e-mail, post or fax to inform you of products or services available. If you do not want to be contacted for marketing purposes or do not wish your information to be made available to any other parties please notify us in writing.

HARRISON & HETHERINGTON LTD

Have you thought about a contract farming agreement?

- Simple and flexible agreements
- Farmer still in control
- Arable and livestock agreements
- Farmer/landowner – supplies the fixed assets (land and buildings)
- Contractor – supplies the labour, machinery and the expertise
- Opportunity for new entrants
- Release of capital for the farmer
- Economies of scale for the contractor
- Tax incentives for the farmer
- Remuneration; basic returns and divisible surplus - % splits

For any rural property questions,
do get in touch today.



James Worthington
Savills Dumfries
07770 976 139
jworthington@savills.com

savills.co.uk

savills



Plasucha Alys 18,000gns – ET sister to Lot 430 & 437